

M.P.

L. & S.—63

L. & S. 2/1/22 543550

revised
2005/11/24

SURVEY ORDER No.

376/2003

Bk. 1359 fol. 42

In the Ward of Tacarigua

SURVEY OFFICE,

December 23rd 19 2003

To

Mr. INDAR RAGOO TTLS
Land Surveyor

The application for the undermentioned parcel of Land having been approved, I request you to set out the Boundaries, by a Traverse Survey, and according to the Land Surveyors Rules, 1935.

Names of Petitioner and Residence	ACREAGE			Boundaries
	A.	B.	P.	
Survey and Subdivision of a Parcel of land at Ramdehal Trace, St. Augustine for leases to Elizabeth Granb.				N. RAMDEHAL LANE 10.06M WIDE S. SANKAR STREET 10.06M WIDE E. now or formerly MARIA RAMDEHAL + SATNARINE PALADEE W. SHANTI PERSAD + BATCHASINGH

Road to be reserved to provide access to

Director of Surveys

CERTIFICATES

I certify that I checked the steel tape used on the Standard on the day of and that I verified the compass used on the day of on the Port-of-Spain Referring Mark.

Land Surveyor

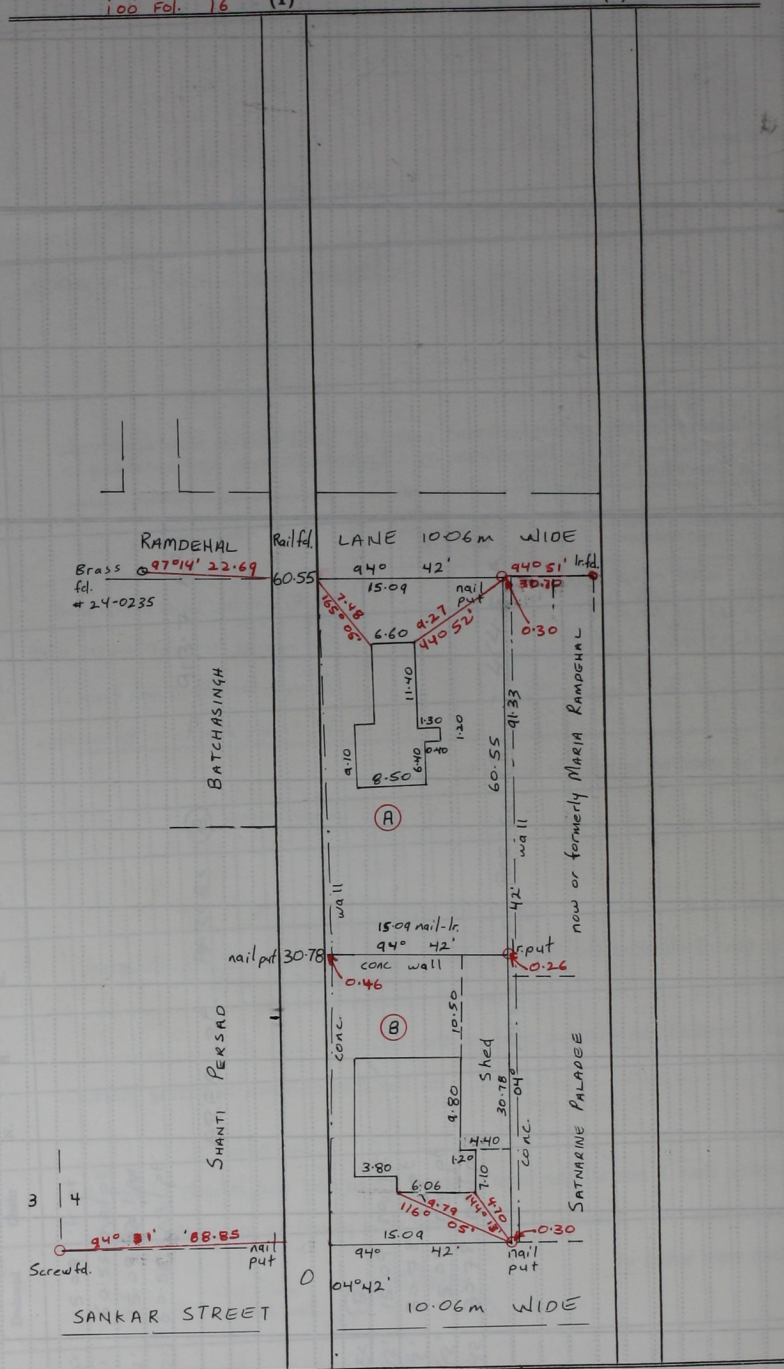
I certify that I ran all the lines charged for myself and strictly observed Rule 10 and that 4 ^{NAILS} pillars and 1 irons were placed by me on the survey. Pillars were taken at

Snder Rago
Land Surveyor



Sta.	BEARING Field	DIST. (N) Deduced	Sta Omn	N.	S.	E.	W.	Sta.	Meridian	Perpen- dicular	Double Longitudes	North Products	South Products	Sta.	Co-ordinates	
516 ①	94. 42'	15.09	1 r pt													
	4. 42'	60.55	naill pt													
	274. 42'	15.09	naill pt													
	184. 42'	60.55	naill pt								913.7 m ²					
				AREA OF PARCELS ①												
517 ②	PARCELS	15.09	naill pt													
	94. 42'	30.78	1 r pt													
	4. 42'	15.09	naill pt													
	274. 42'	30.78	naill pt													
	184. 42'	30.78	naill pt													
				AREA OF PARCELS ②												

Sta.	Dist.	Area	Perimeter	Remarks



Bearings are Cassini Grid based on Solar Observations.

Distances are in metre

Containing together one thousand three hundred and seventy eight point two square met