

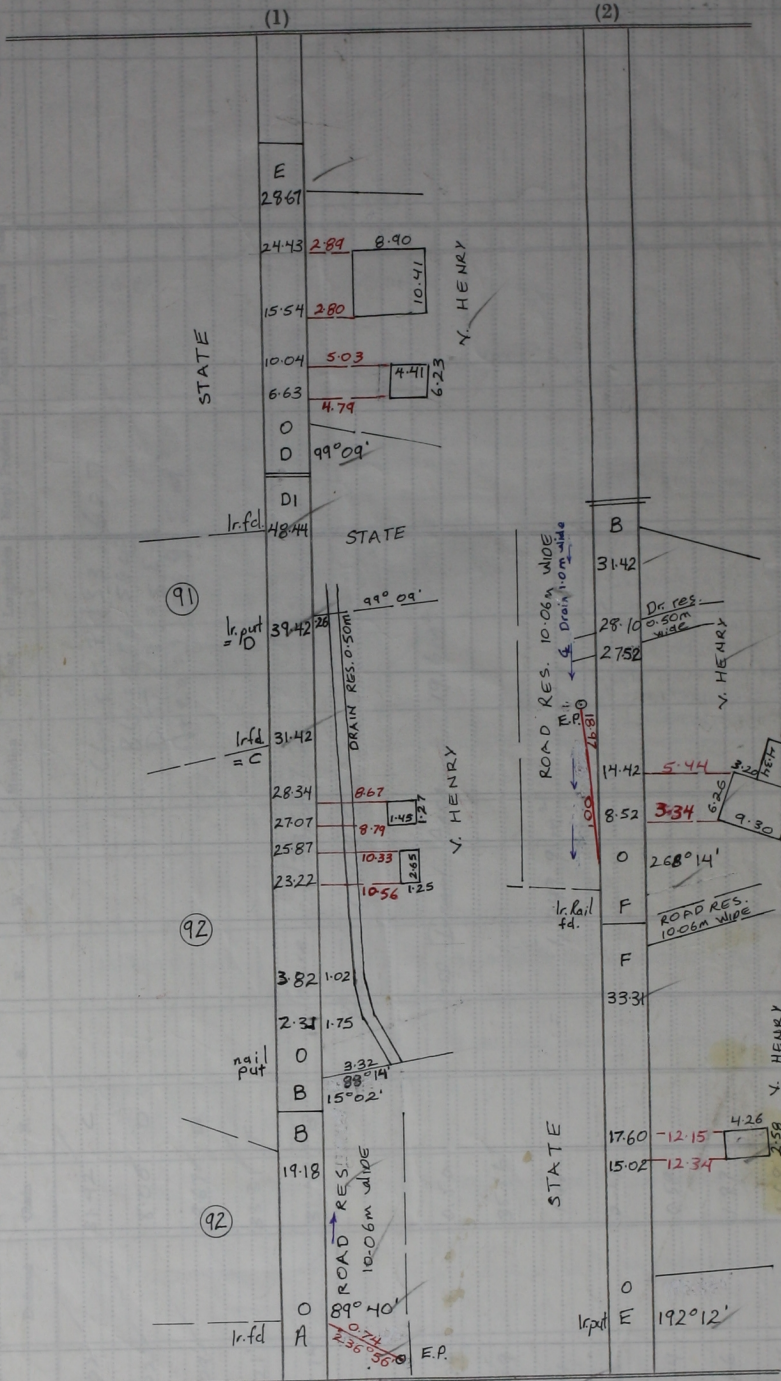
Sta.	Field	Deducted	Chain	N.	S.	E.	W.	Sta.	Meridian	Perpen- dicular	Double Longitudes	North Products	South Products	Sta.	Co-ordinates
B	15° 02'		31.42	C											
C	15° 02'		8.06	D											
D	99° 04'		28.67	E											
E	192° 21'		33.31	F											
F	268° 14'		31.42	B		Closure	1/33627.2								
						Area	1,069.5 m ²								
						less Drain Area	19.6 m ²								
			0.50												
	193° 49'		35.56												
	169° 14'		1.48			=	1,049.9 m ²								
	148° 26'		2.17												
	268° 14'		0.58												
	328° 26'		1.97												
	349° 14'		1.68												
	13° 49'		25.63												

Closure = 1331.627
 BS = 286.564
 DIST = 3.95 E-3
 Area = 1069.5 m²

Closure 1/33627.2
 Area 1,069.5 m²

less Drain Area
 = 1,049.9 m²

FIELD NOTES



Bearings are Cassini Grid based on Solar Obs.
Containing one thousand and forty nine point nine square metres.

Handwritten signature