

M.P.

L. & S.—63

Splains

LA 9/1/26
L. & S. 9/1/26

Supersedes 870 5/1/1986

SURVEY ORDER No.

345/2003

Bk. 1361 fol. 1

In the Ward of SIPARIA

SURVEY OFFICE,

NOVEMBER 18TH 192003

To

MR. HUGO SOMARSINGH T.T.S.
Land Surveyor

The application for the undermentioned parcel of Land having been approved, I request you to set out the Boundaries, by a Traverse Survey, and according to the Land Surveyors Rules, 1935.

Names of Petitioner and Residence	ACREAGE			Boundaries
	A.	B.	P.	
FOR SURVEY OF A PARCEL OF LAND (1.2 HA) TO BE ACQUIRED FOR A RECREATION GROUND SAID TO BELONG TO MOHUN-DEBEDIAI TRACE				N. R. RAMPESAD, R. SEENATH + B. RAMSARAN S. DAYBIDIAL TRACE 1207m WIDE E. H.+S. RAMSARAN, R. SEENATH + B. RAMSARAN W. MOHUN NOW RAMNARINE RAMPESAD

Road to be reserved to provide access to

[Signature]
Director of Surveys

CERTIFICATES

I certify that I checked the steel tape used on the Standard on the day of and that I verified the compass used on the day of on the Port-of-Spain Referring Mark.

Land Surveyor

I certify that I ran all the lines charged for myself and strictly observed Rule 10 and that pillars and irons were placed by me on the survey. Pillars were taken at

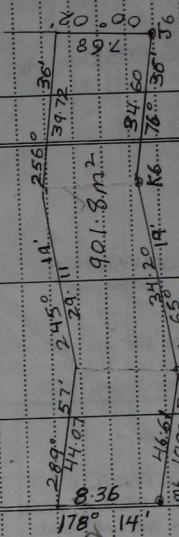
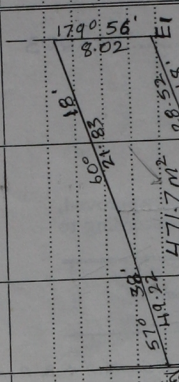
[Signature]
Land Surveyor

Sta.	Field	Deducted	Chain	N.	S.	E.	W.	Sta.	Meridian	Perpen- dicular	Double Lengths	North Products	South Products	Sta.	Co-ordinates
E.1	359° 56'		114.27	F											
F	270° 01'		60.32	C											
C	180° 02'		151.07	S.6											
S.6	57° 38'		42.35	H.6											
H.6	60° 18'		28.52	E.1											
					Obs. - 120.163.7				Road Area						
					Area = 7989.1 m ²				- 411.7 m ²						
					Total = 7517.4 m ²										
(B)															
S.6	00° 02'		151.07	C											
C	249° 09'		93.11	B											
B	190° 41'		118.02	A.1											
A.1	178° 14'		8.36	M.6											
M.6	109° 57'		46.61	L.6											
L.6	65° 19'		34.20	K.6											
K.6	76° 36'		34.60	S.6											
					Closure - 151.904.2				Road Area						
					Area - 14243.6 m ²				- 901.8 m ²						
					Total = 13341.8 m ²										

(B)

(H)

comp. cld. 1.1.1



Survey Order No. 345/2003.....

FIELD NOTES

(1)		(2)	
	B Infd. 9311	now R. Rampersad	E1 2852
(A)	O Infd. C 249°09'		O nail put H6 60° 18'
	C 6032	now R. Seenath + B. Ramsaran	H6 4235
(B)	O F 270°01'		O nail put J6 57° 38'
	F Infd. 14359	R. Seenath + B. Ramsaran	J6 3460
(B)	Infd. E = 3957		O nail put K6 76° 35'
	E1 = 2932		K6 3420
DAYBIDIAL TRACE 12.07m	TRACE WIDE 1070	H.+S. Ramsaran	O nail put L6 65° 19'
	O Nm.f.d. G 359°56'		L6 4661
	G 11064	H.+S. Ramsaran	O nail put M6 109°57'
	Nm.f.d. 71.61	now R. Seenath + B. Ramsaran	M6 836
now Ranmarine Rampersad	Nm.f.d. 30.48	S. Ranmarine	DAYBIDIAL TRACE WIDE 12.07m A1 178°14'
	O Infd. H 270°02'		A1 11802
			(A) A = 11464 Infd.
			O Infd. B

Bearings are Cassini-Grid based on Solar Observations.