

M.P.....

L. & S. 1011249 Vol III

SURVEY ORDER No.

328/2003

*BK 1290 77.16*

In the Ward of *Diego Morlan*

SURVEY OFFICE,

*OCTOBER 21<sup>ST</sup>* 19*2003*

To

MR. HECTOR SANKAR  
Land Surveyor

The application for the undermentioned parcel of Land having been approved, I request you to set out the Boundaries, by a Traverse Survey, and according to the Land Surveyors Rules, 1935.

Names of Petitioner and Residence	ACREAGE			Boundaries
	A.	R.	P.	
SURVEY OF A PARCEL OF LAND SITUATE AT #6 RIVERSIDE TERRACE, GLENCOE, OCCUPIED BY MR. TREVOR MURRAY. FOR THE STATE				N. S. E. W.

Road to be reserved to provide access to

*[Signature]*  
Director of Surveys

CERTIFICATES

I certify that I checked the steel tape used on the .....Standard on the..... day of..... and that I verified the compass used on the..... day of ..... on the Port-of-Spain Referring Mark.

Land Surveyor

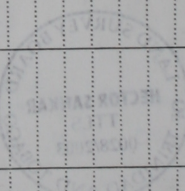
I certify that I ran all the lines charged for myself and strictly observed Rule 10 and that ~~pillars and~~ irons were placed by me on the survey.

~~Pillars were taken at~~

*[Signature]*  
Land Surveyor



Sta.	Field	Deducted	Chain	N.	S.	E.	W.	Sta.	Meridian	Perpen- dicular	Double Longitudes	North Products	South Products	Sta.	Co-ordinates
	CASSINI		METRES												
B	161° 35'		21.03					B							
C	93° 50'		33.62					C							
L	350° 15'		20.02					L							
H	273° 50'		36.88					H							
	Clearance	1/26351		Area =		6861.0 m <sup>2</sup>									

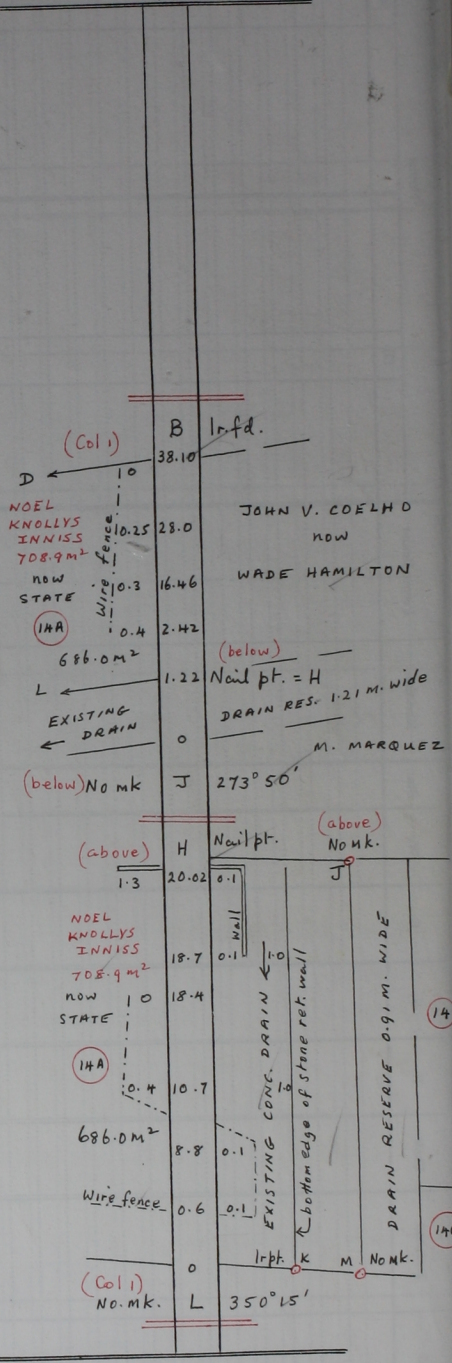
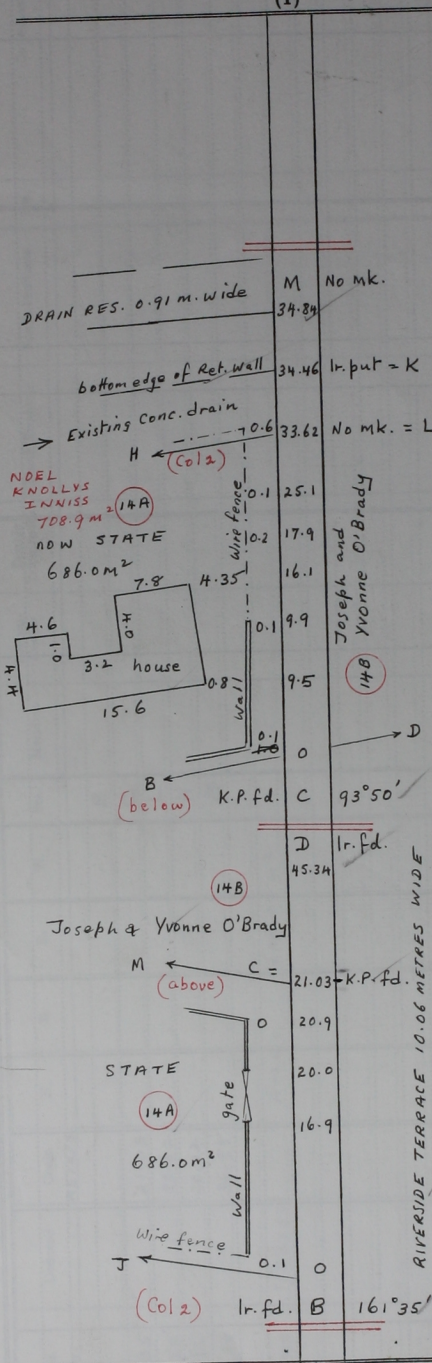




FIELD NOTES

(1)

(2)



Bearings are Cassini Grid based on solar observations. Distances are in Metres  
 Ward of Diego Martin, County of St. George. Cadastral Sheet A.19.C. 12F  
 See Plan P.C.56 BK.1137 Fol.96 3/C