

M.P.....

L. & S.—53

*Splains*

L. & S. 211960.....

SURVEY ORDER No.

286/2003

*BK 1269 Pt. 218*

In the Ward of..... DIEGO MARTIN.....

SURVEY OFFICE,

AUGUST 7<sup>TH</sup> 19 2003

To

MR. CALVIN ARCHBOLD T.L.S.  
Land Surveyor

The application for the undermentioned parcel of Land having been approved, I request you to set out the Boundaries, by a Traverse Survey, and according to the Land Surveyors Rules, 1935.

Names of Petitioner and Residence	ACREAGE			Boundaries
	A.	R.	F.	
SURVEY OF A PARCEL OF LAND (353 M <sup>2</sup> ) KNOWN AS THE OLD DIEGO MARTIN RIVER BED, WESTMORELAND DRIVE, DIEGO MARTIN FOR A STATE GRANT FOR ENID BOUCHET.				N. S. E. W.

Road to be reserved to provide access to

*[Signature]*  
Director of Surveys

CERTIFICATES

I certify that I checked the steel tape used on the .....Standard on the..... day of..... and that I verified the compass used on the..... day of ..... on the Port-of-Spain Referring Mark.

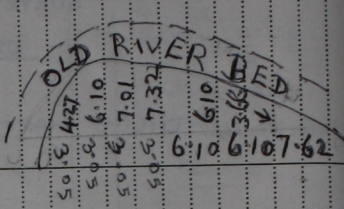
Land Surveyor

I certify that I ran all the lines charged for myself and strictly observed Rule 10 and that pillars and / <sup>NAIL WAS</sup> irons were placed by me on the survey.

Pillars were taken at

*[Signature]*  
Land Surveyor

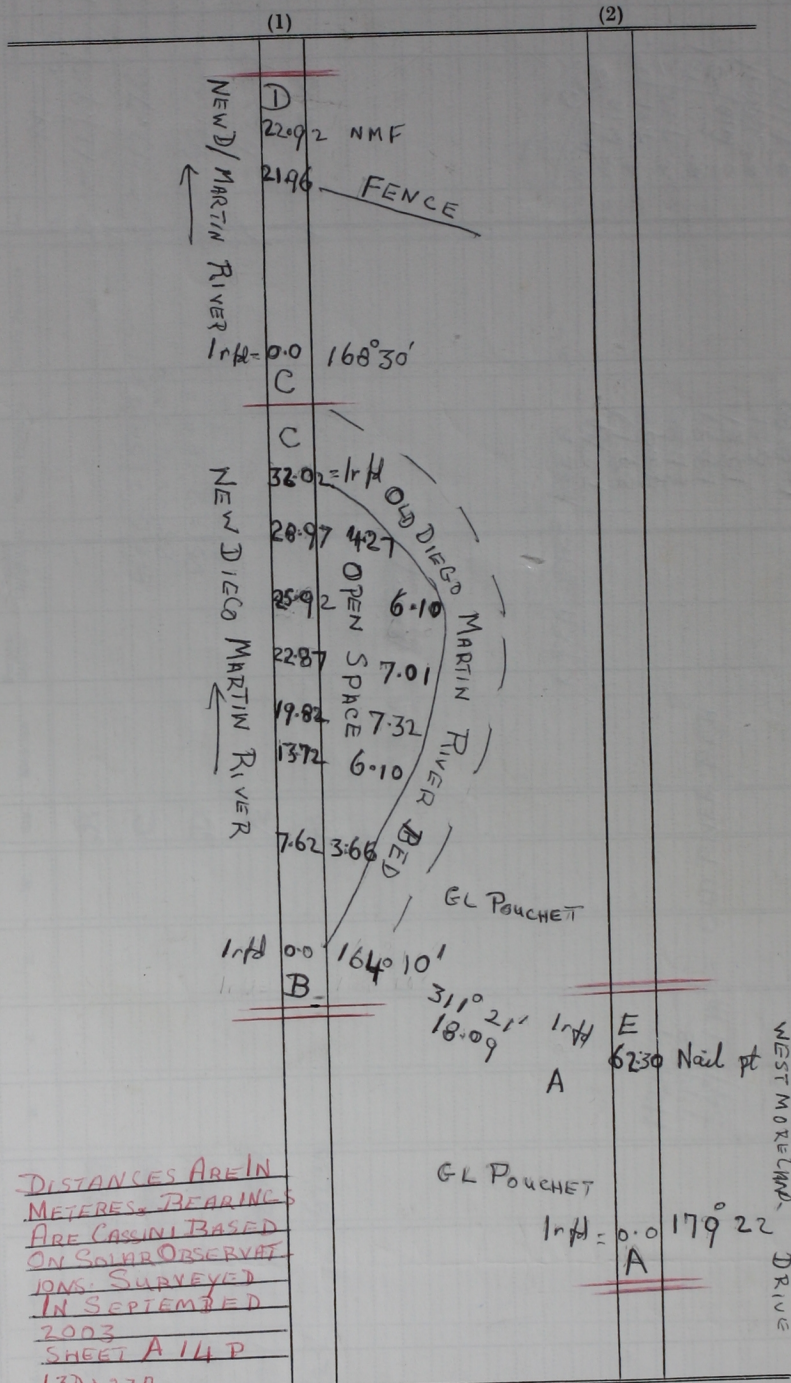
Sta.	Field	Deducted	Chain m	N.	S.	E.	W.	Sta.	Meridian	Perpen- dicular	Double Longitudes	North Products	South Products	Sta.	Co-ordinates
A	131° 21'		18.09					B			Close 21541.284 BS = 274.5019			A	N 0.0 E 0.0
B	164° 10'		32.02					C			PST = 2.98 E 3 Area = 1.124.9 m <sup>2</sup>			B	N -11.95 E 13.58
C	168° 30'		22.92					D						C	N -42.76 E 22.32
D	276° 22'		26.36					E						D	N -65.22 E 26.89
E	359° 22'		67.30					A						E	N -62.29 E 0.69
<u>AREA = 1124.9 m<sup>2</sup></u>															
OPEN SPACE AREA m <sup>2</sup>															
13.74															
29.77															
40.93															
21.85															
19.99															
15.81															
6.51															
148.80															
629.0															
777.8 m <sup>2</sup>															
<u>1124.9 - 747.8 = 377.1 m<sup>2</sup> = OLD RIVER BED</u>															
GL Pouchet															



Station N. S. E. W. Sta. Meridian Perpendicular  
 Station N. S. E. W. Sta. Meridian Perpendicular



FIELD NOTES



DISTANCES ARE IN METERS. BEARINGS ARE CASINI BASED ON SOLAR OBSERVAT IONS. SURVEYED IN SEPTEMBER 2003 SHEET A 14 P 13D+23A