

M.P. ....

L. & S. 111617 .....

BK 1359 f 180

L. & S.—53

plans

SURVEY ORDER No.

34/2001

In the Ward of ST. ANNS .....

SURVEY OFFICE,

FEBRUARY 14<sup>th</sup> 1920

To

MR INBAR RAGOO T.T.L.S.  
Land Surveyor

The application for the undermentioned parcel of Land having been approved, I request you to set out the Boundaries, by a Traverse Survey, and according to the Land Surveyors Rules, 1935.

Names of Petitioner and Residence	ACREAGE			Boundaries
	A.	B.	P.	
SURVEY OF A PARCEL OF LAND SITUATED AT GRAND FOND ROAD MARALAS FOR A STANDARD AGRICULTURAL LEASE FOR GILLS FOURMILLIE	(2 hca approve)			N. STATE AND STATE TRACE S. STATE E. STATE W. STATE

Road to be reserved to provide access to

*[Signature]*  
Director of Surveys

CERTIFICATES

I certify that I checked the steel tape used on the ..... Standard on the ..... day of ..... and that I verified the compass used on the ..... day of ..... on the Port-of-Spain Referring Mark.

Land Surveyor

I certify that I ran all the lines charged for myself and strictly observed Rule 10 and that 0 pillars and 2 irons were placed by me on the survey.

Pillars were taken at

*[Signature]*  
Land Surveyor





Sta.	Field	Deducted	Chain	N.	S.	E.	W.	Sta.	Meridian	Perpendicular	Double Longitudes	North Products	South Products	Sta.	Co-ordinates
A	57° 37'		107.44												
	20° 47'		87.30												
	00° 16'		28.14												
	32° 48'		61.56												
	284° 34'		10.66												
	255° 46'		106.72												
	185° 43'		83.23												
	49° 02'		73.70	A											
Closure = 1 / 5,832															
Area = 2,5076 ha.															

Perpendicular Meridian



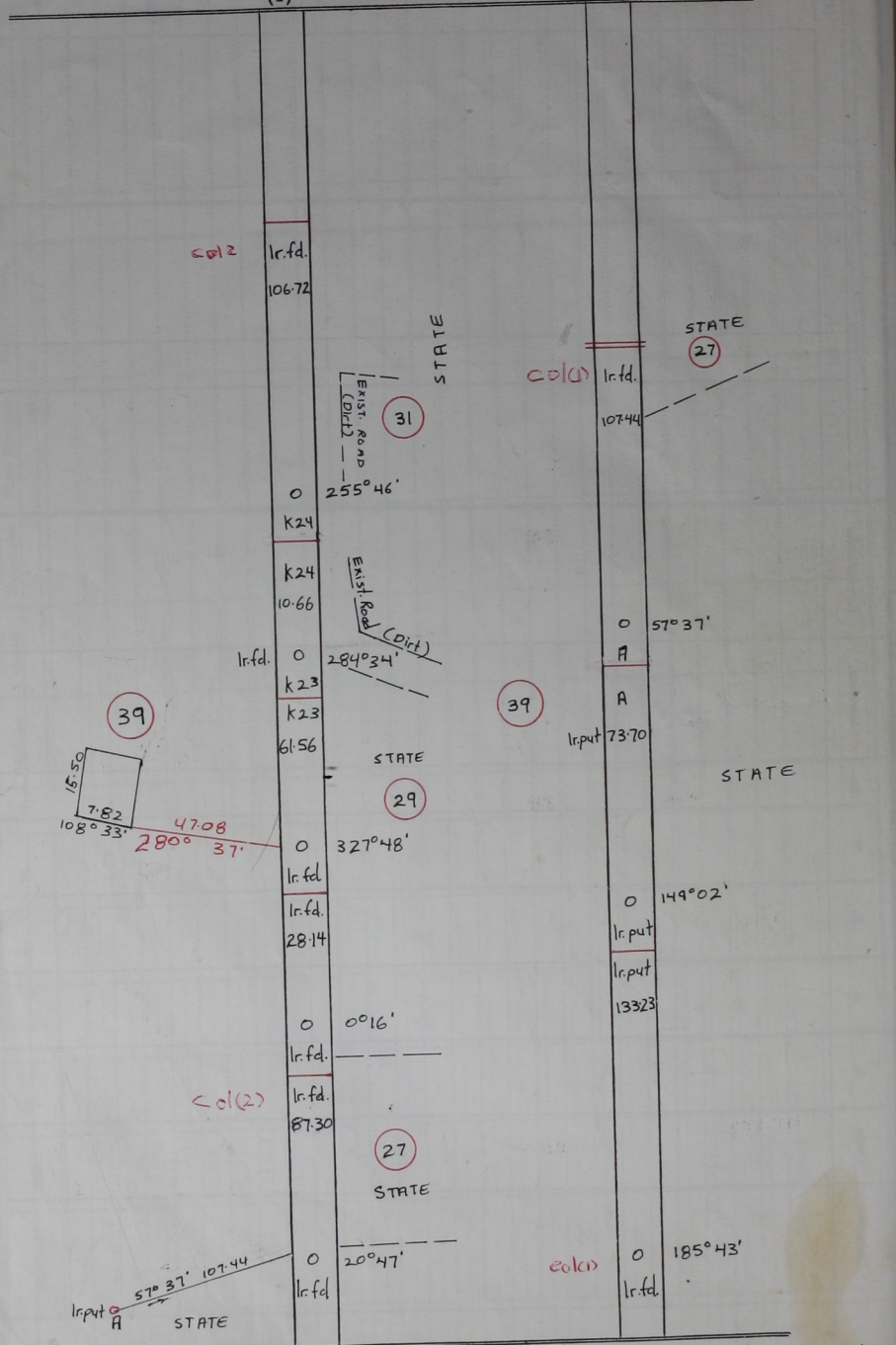
Survey Order No. 34/2001

FIELD NOTES

(1)

(2)

VIDE S.O.# 183/200



Bearings are U.T.M. Grid based on Solar Observations.  
 Distances are in metres.  
 Containing two point five zero seven six hectares.