

M.P.
L. & S. 2111424

SURVEY ORDER No.

12112000

9 plates
BK 1269 *77. 219*

In the Ward of... TACARICUA

SURVEY OFFICE,

JUNE 8th 19 2000

To

MR. RON CATADHAR T.T.U.:
Land Surveyor

The application for the undermentioned parcel of Land having been approved, I request you to set out the Boundaries, by a Traverse Survey, and according to the Land Surveyors Rules, 1935.

Names of Petitioner and Residence	ACREAGE			Boundaries
	A.	B.	P.	
SURVEY OF WABA QUARTERS KNOWN AS TUNAPUNA RD. TUNAPUNA, SITUATED AT TUNAPUNA RD, TUNAPUNA. OCCUPIED BY BLACKPOOL SIC.				N. S. E. W.

Road to be reserved to provide access to

Michael J...
Director of Surveys

CERTIFICATES

I certify that I checked the steel tape used on theStandard on the..... day of..... and that I verified the compass used on the..... day of on the Port-of-Spain Referring Mark.

Land Surveyor

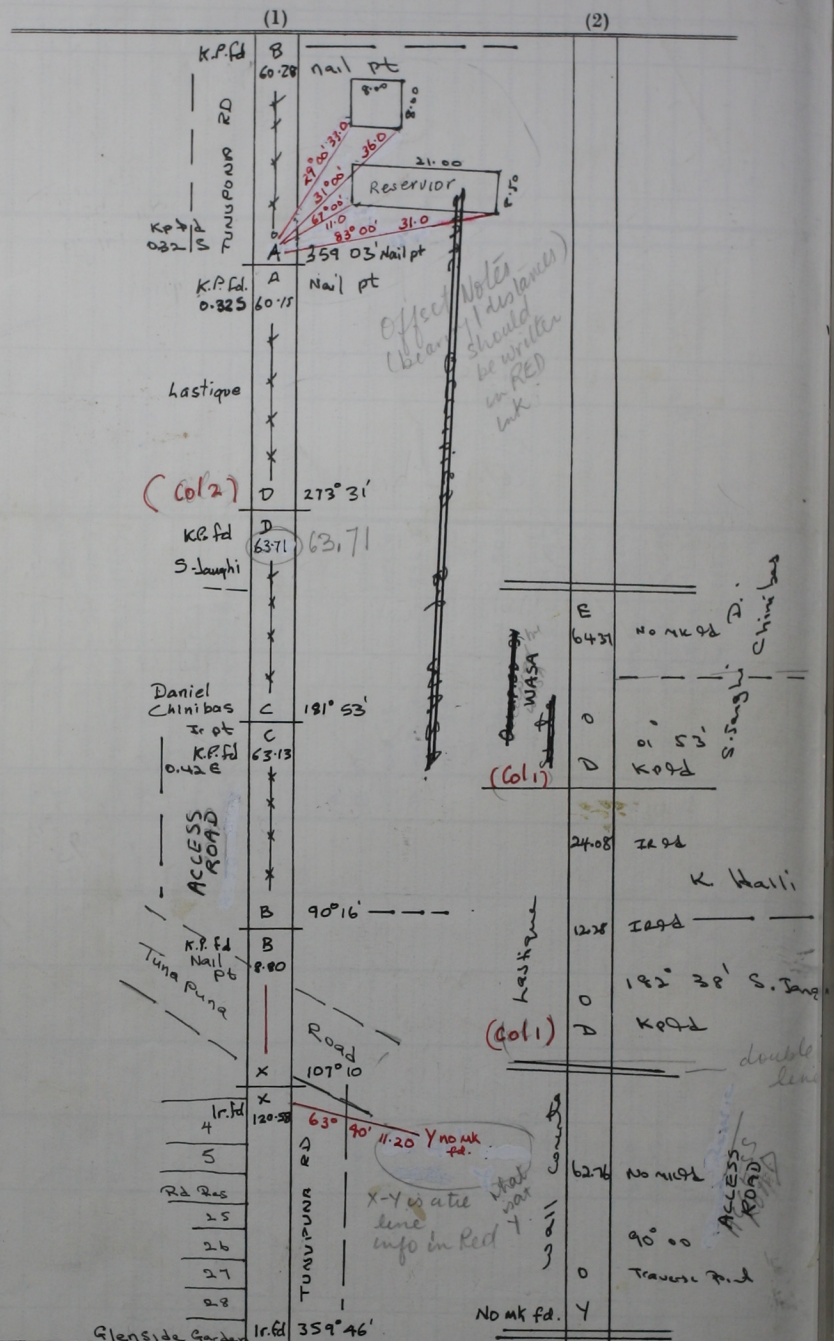
I certify that I ran all the lines charged for myself and strictly observed Rule 10 and that pillars and irons were placed by me on the survey.

Pillars were taken at

[Signature]
Land Surveyor
LAND SURVEY BOARD
RON CATADHAR
T.T.U.
12112000
OFFICE OF THE DAD AND TERN

Sta.	Field	Deducted	Chain	N.	S.	E.	W.	Sta.	Meridian	Perpen- dicular E	Double Longitude N	North Products	South Products	Sta.	Co-ordinates
A	359° 03'	60.60	60.60	60.28				A	999.00	1000.00	1000.00				
B	90° 12'	63.72	63.72	63.13				B	1062.13	1062.13	1062.13	1060.27			
C	181° 53'	63.71	63.71	60.15				D	1060.00	1060.00	1060.00	996.30			
D	273° 08'	60.28	60.28	60.15				A	1000.00	1000.00	1000.00	999.99			
									30.221						
									PRECISION = 1:	37786					
									AREA = 3850.4 m ²						
											3817.8 m ²				
A	359° 03'	60.28	60.28					A	999.00	1060.27	1060.27				
B	90° 12'	63.13	63.13					C	1062.13	1059.98	1059.98				
C	181° 53'	63.71	63.71					D	1060.00	996.30	996.30				
D	273° 31'	60.15	60.15					A	1000.00	999.99	999.99				
											1.3022				
									PRECISION =						
									AREA	3817.8 m ²					
A	359° 03'	60.28	60.28					A	1000.00	1060.27	1060.27				
B	90° 12'	63.13	63.13					B	1062.13	1059.98	1059.98				
C	181° 53'	63.71	63.71					C	1060.00	996.30	996.30				
D	273° 31'	60.15	60.15					D	1000.00	999.99	999.99				

FIELD NOTES



Ward of Tacarigua
 County of St. George
 Cadastral Sheet: 14D, B.18.J.
 3/d

Distance in Metres
 Bearings are Cassini Grid
 based on Solar Obs
 Surveyed in June 2000
 for WASA