

M.P.

L. & S. 2/3/17 Sub 18

To Red House
For checking
of plans
26.10.14

SURVEY ORDER No.

64/96

BK 1214 Feb 192

In the Ward of Matura

SURVEY OFFICE,

20th June 1926.

To

Hakeeb Nandlal
Land Surveyor

The application for the undermentioned parcel of Land having been approved, I request you to set out the Boundaries, by a Traverse Survey, and according to the Land Surveyors Rules, 1935.

| Names of Petitioner and Residence | ACREAGE | | | Boundaries |
|---|---------|----|----|----------------------|
| | A. | R. | P. | |
| <u>Surrey of Lot No 18 Rampanalgas Village for a lease to Phyllis Wilcox.</u> | | | | N. S. E. W. |

Road to be reserved to provide access to

Andrew Bowler
Director of Surveys
20/6/26

CERTIFICATES

I certify that I checked the steel tape used on theStandard
on the..... day of.....
and that I verified the compass used on the.....
day of on the Port-of-Spain Referring Mark.

Land Surveyor

I certify that I ran all the lines charged for myself and strictly observed
Rule 10 and that pillars and irons were placed by me on the survey.

Pillars were taken at

Hakeeb Nandlal
Land Surveyor

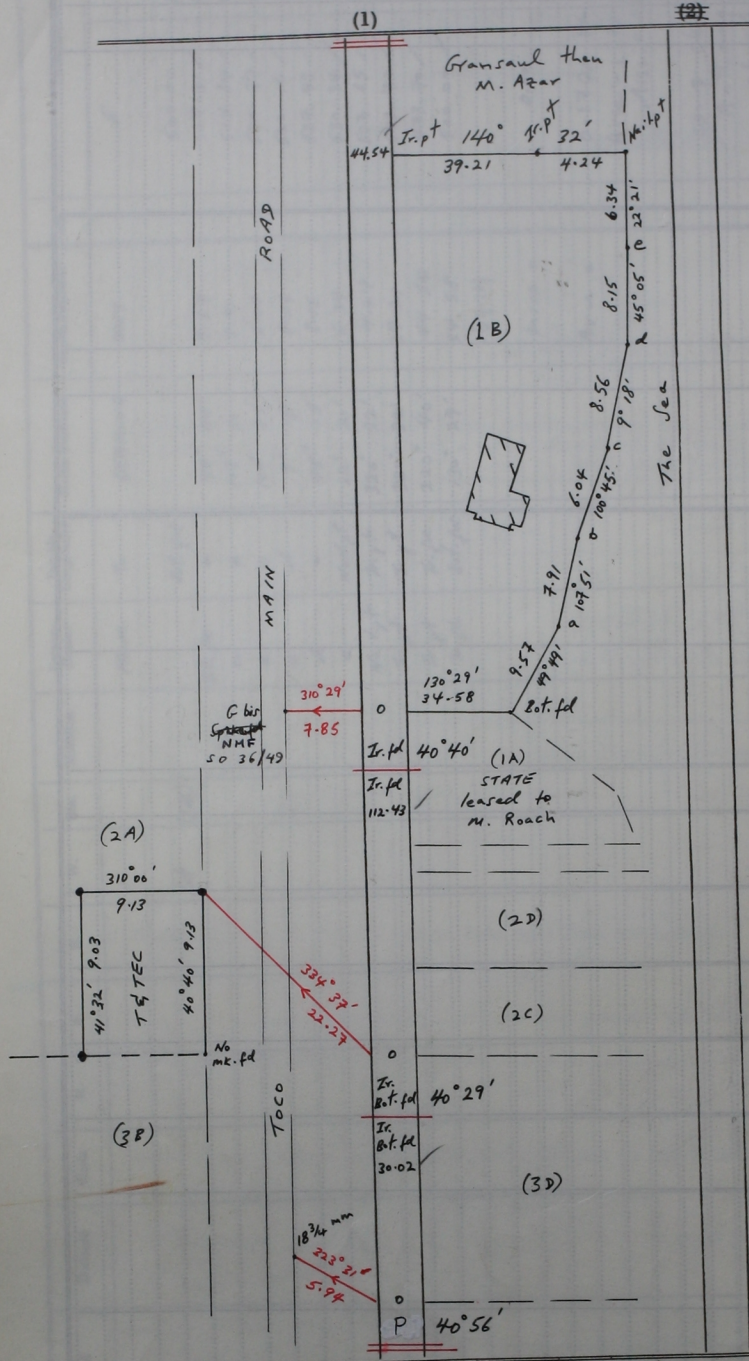
| Sta. | Field | Deduced | Chain | N. | S. | E. | W. | Sta. | Meridian | Perpen- dicular | Double Longitudes | North Products | South Products | Sta. | Co-ordinates |
|------|-------|---------|-------|------|----|----|----|------|----------|--------------------|----------------------|----------------|----------------|------|------------------------------------|
| | | | | | | | | | | FROM | To | BEMING | DIOT. | | E |
| | | | Lot | (1B) | | | | | | B.t. fc | a | 49° 49' | 9.57 | | 500.00 |
| | | | | | | | | | | a | b | 107° 51' | 7.91 | | 507.31 |
| | | | | | | | | | | b | c | 100° 45' | 6.04 | | 514.84 |
| | | | | | | | | | | c | d | 9° 18' | 8.56 | | 520.77 |
| | | | | | | | | | | d | e | 45° 05' | 8.15 | | 522.16 |
| | | | | | | | | | | e | N.t. pt | 22° 21' | 6.34 | | 527.93 |
| | | | | | | | | | | N.t. pt | X.p.t | 320° 32' | 4.24 | | 530.34 |
| | | | | | | | | | | X.p.t | X.p.t | 320° 32' | 39.21 | | 527.65 |
| | | | | | | | | | | X.p.t | X.p.t | 220° 40' | 44.54 | | 502.72 |
| | | | | | | | | | | X.p.t | B.t. fc | 130° 29' | 34.58 | | 473.70 |
| | | | | | | | | | | B.t. fc | | | 169.14 | | 500.00 |
| | | | | | | | | | | | | | Area = | | 0.00 |
| | | | | | | | | | | | | | Area = | | 0.1720 Ha |
| | | | | | | | | | | | | | | | Area = 1.120.0 Ha |
| | | | | | | | | | | | | | | | Misc: 0.0000 |
| | | | | | | | | | | | | | | | Comp. ckd, Autlony 9.6.10.14 |

Total Charge - 256.99 metres
 ced. Anthony Wilcox
 26.10.14

Survey Order No. 64/196.....

"RAMPANALGAS VILLAGE"

FIELD NOTES



Note: All points are
 to be set unless otherwise
 stated.

Points a-e are
 boundary
 traverse points - no
 marks put.

vide Plan X.D. 18
 C.N. 112
 Ex. 922 : 238
 S.O. 36/49 Col. 4

Distances are in metres

Bgr. are Cassini based on Saker Obs.

Surveyed in July 1996 to be leased to
 Phyllis Marjorie Wilcox

L.A.S.-2000.-36/85.-22/2

Cadastral Sheet 16C, C.14. B.14
 1/10 & 1/12

Ward of Matara
 County of St. David Andrew