

R.P.O. Vol. 86
C.T. Vol.

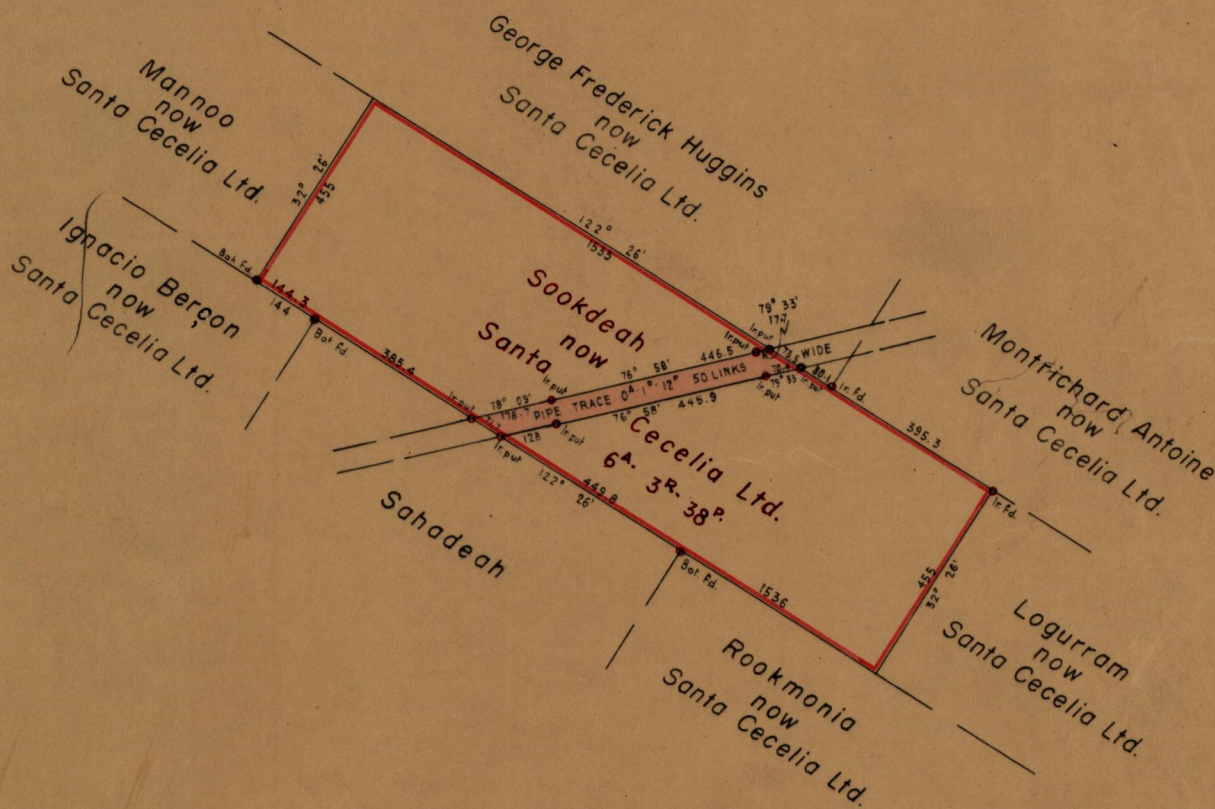
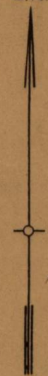
Fol. 511
Fol.

957

Ward of SIPARIA
County of ST. PATRICK
Cadastral Sheet G12K

39

G.N.



Approved

Lud. E. Sauls

Deputy Director of Surveys
29/8/60

Scale 4 Chains to 1 Inch

Note: To obtain compass bearings ~~add~~/subtract 4 minutes Distances are in Links

PLAN of a Parcel of land coloured Pink in the Ward of SIPARIA
Containing ONE Rood and TWELVE Perches
Surveyed by me, with due authority, in 1959 and 1960 for SHELL TRINIDAD LTD.

I certify that I have complied with rule 76 under Section 14 (2) (d) of the Land Surveyor's Ordinance 1952 and that this plan is correct.

Checked *[Signature]* 29-8-60

Entered

Vernon Binard

Land Surveyor, Trinidad

LANDS AND SURVEYS VAULT RECORDS

23rd August 1960

Original in BK 460 fo 189.