

957

{ } { } { } { }

C.T. Vol. 5 Fol. 265

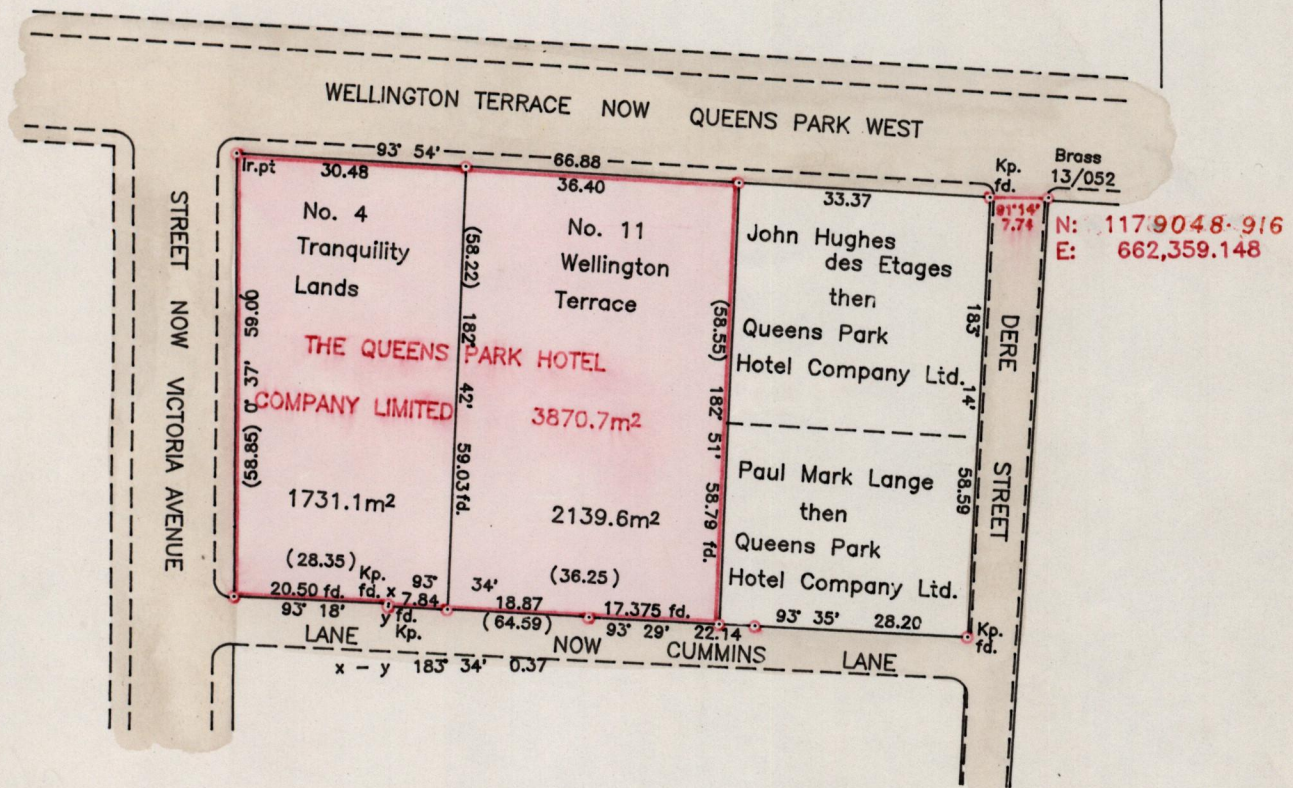
Cadastral Sheet A.20.F 13D&23A

C.T. Vol. 17 Fol. 476

City of Port of Spain

County of St. George

G N
cassini



Approved *[Signature]*
 Director of Surveys
 97/07/96

SCALE 1/1000

○ Denotes Nail put except where otherwise stated.
 Bearings are based on solar observations

Distances are in metres

PLAN of two Parcels of land coloured pink in the City of Port of Spain
 Containing together three thousand eight hundred and seventy point seven
 square metres
 Surveyed by me with due authority in April 1996

I certify that I have complied with rule 76 under section 14(2)(d) of the
 Land Surveyor's Ordinance 1952, and that this plan is correct.

Checked by *[Signature]* 97.9.24

[Signature]

Entered on _____ Land Surveyor, Trinidad. 3rd April 1996.

QPH2

3333

333

3333

[Faint signature]
3333

3333