

357

957

Sta.	Bear.	Dist.
C0 - C2	140° 58'	62.37
C2 - C3	151° 16'	96.53
C3 - C4	151° 03'	36.72
C4 - C5	137° 07'	17.81
C5 - C6	127° 03'	40.46
C6 - C7	110° 55'	19.12
C7 - C8	92° 46'	18.28
C8 - C9	89° 33'	20.59
C9 - C10	110° 41'	15.37
C10 - C11	130° 25'	32.69
C11 - C11A	140° 07'	24.94
C11 - X	45° 16'	5.05
X - 4 1/2 M.M.	296° 37'	172.33

Along Center Line of Guatico Tamana Rd.

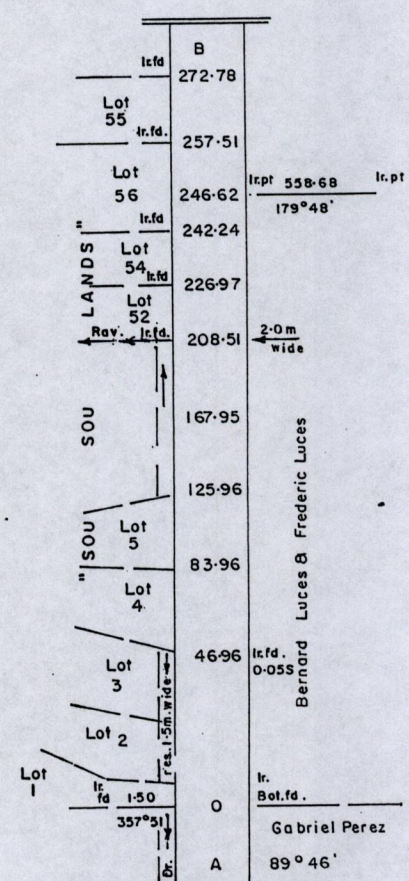
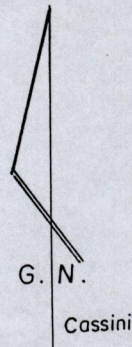
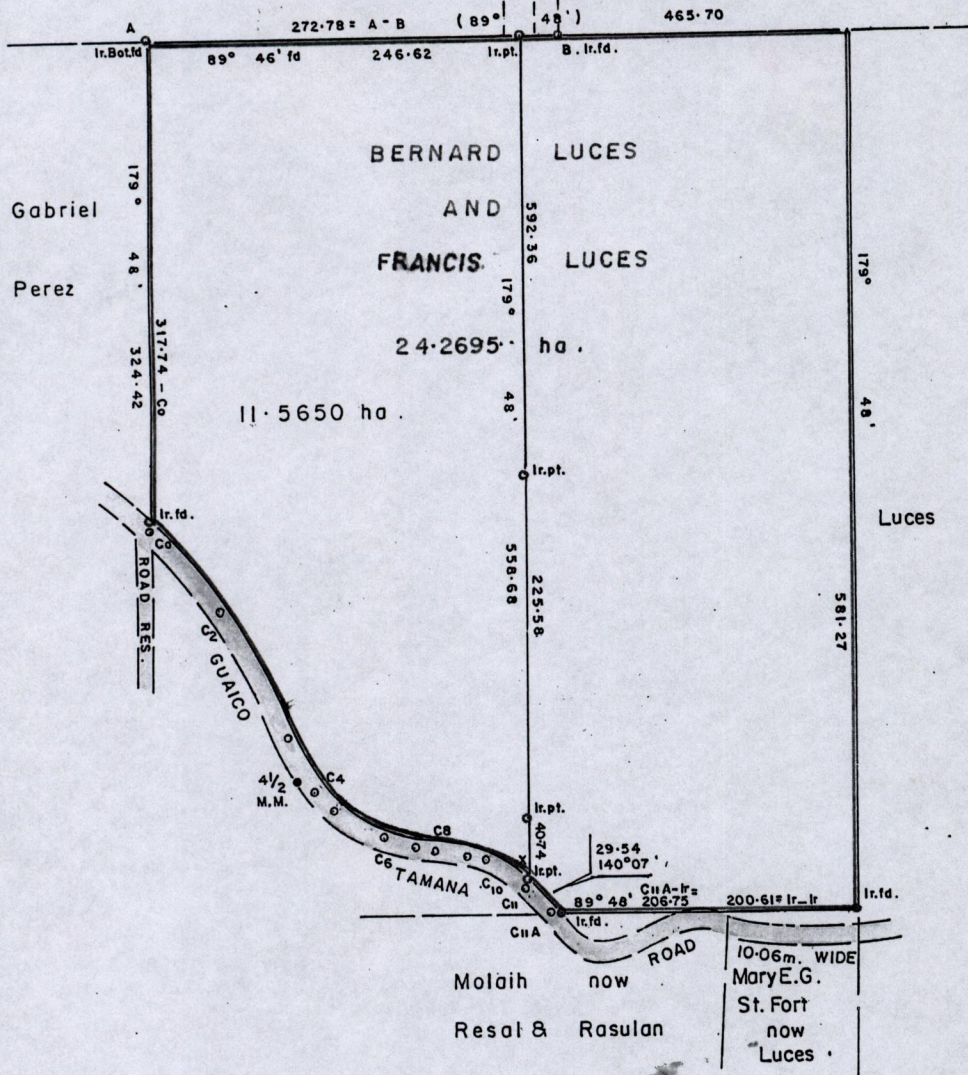
365

Ward of Turure
County of St. Andrew
Cadastral Sheet E.I.P.

35 B
2/b

J. G. de Gannes

now said to be "SOU SOU LANDS"



Approved

J. G. de Gannes
 Director of Surveys
 97/9/5

SCALE : 1/5000

Note: To obtain compass bearings add/subtract 12 minutes Distances are in metres

PLAN of a Parcel of land coloured pink in the Ward of Turure

Containing eleven point five six five zero hectares

Surveyed by me, with due authority, in June & August 1996

I certify that I have complied with rule 76 under Section 14 (2) (d) of the Land Surveyors' Ordinance 1952, and that this plan is correct.

Checked by *MP* 97/08/25

Arnold A. E. Ramon
 Land Surveyor, Trinidad
 26th September 96

Entered.....

288

Original Survey Bk 1149 fol 72

ORIGINAL SENT TO DRAWING OFFICE
ON 14th JANUARY '10

