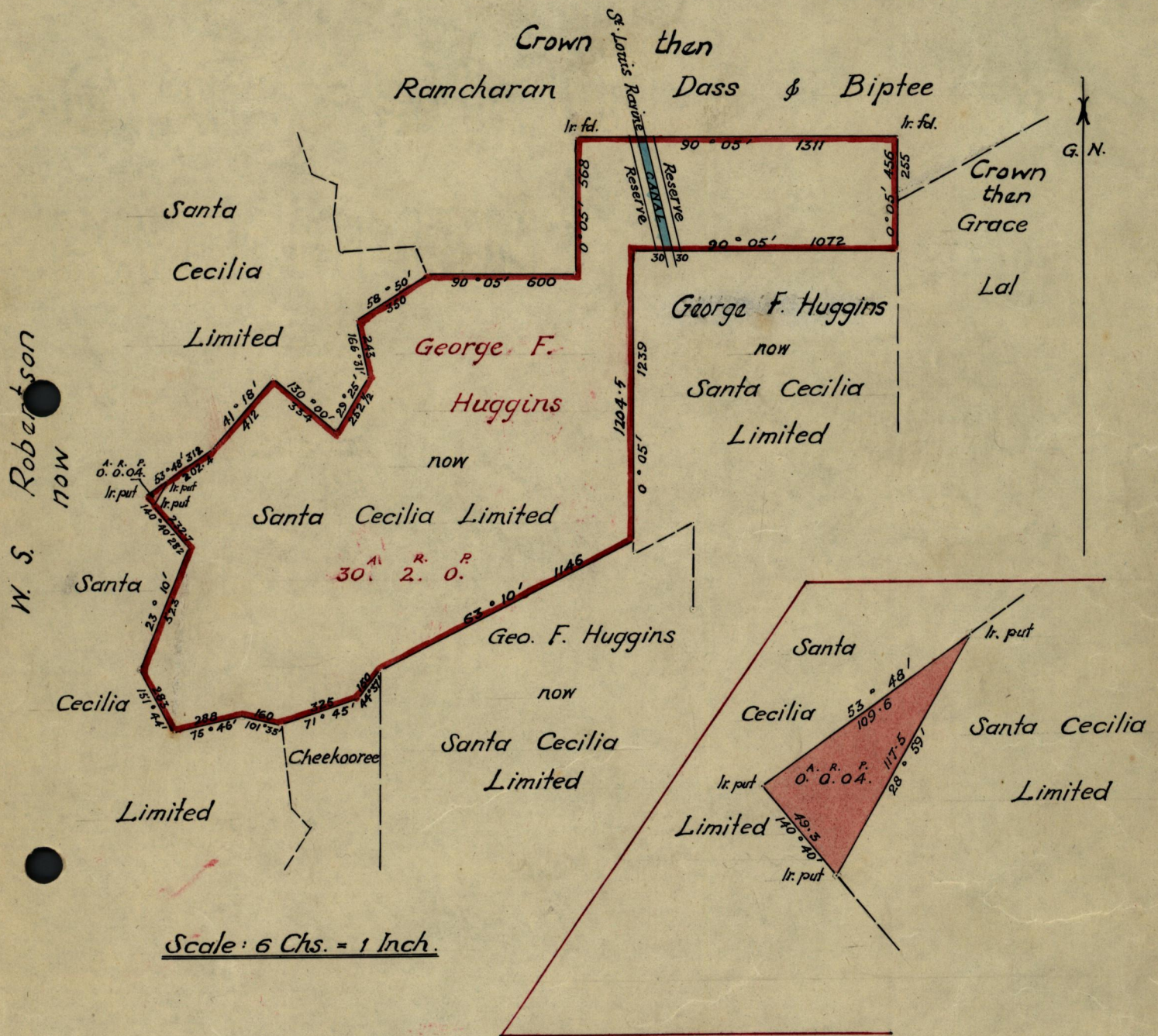


Nº 6539

R.P.O. Vol. 164 Fol. 209
C.T. Vol. Fol.

Ward of Siparia
County of St. Patrick.
Cadastral Sheet G 12 C.



Approved
Hamilton Murray
 Deputy Director of Surveys
 25-9-58

SCALE : 1 : 500
 Distances are in links

Note: To obtain compass bearings ~~add~~ subtract five minutes
 PLAN of a Parcel of land coloured pink in the Ward of Siparia
 Containing four perches

Surveyed by me, with due authority, in April 1958
 I certify that I have complied with rule 76 under Sec. 4(2)(d) of the Land Surveyors Ordinance 1952
 and that this plan is correct

Checked by *St 25/19/58*
 Entered
B. A. Spencer
 Land Surveyor, Trinidad. 23rd May 1958

LANDS AND SURVEYS VAULT RECORDS

