

957

1848

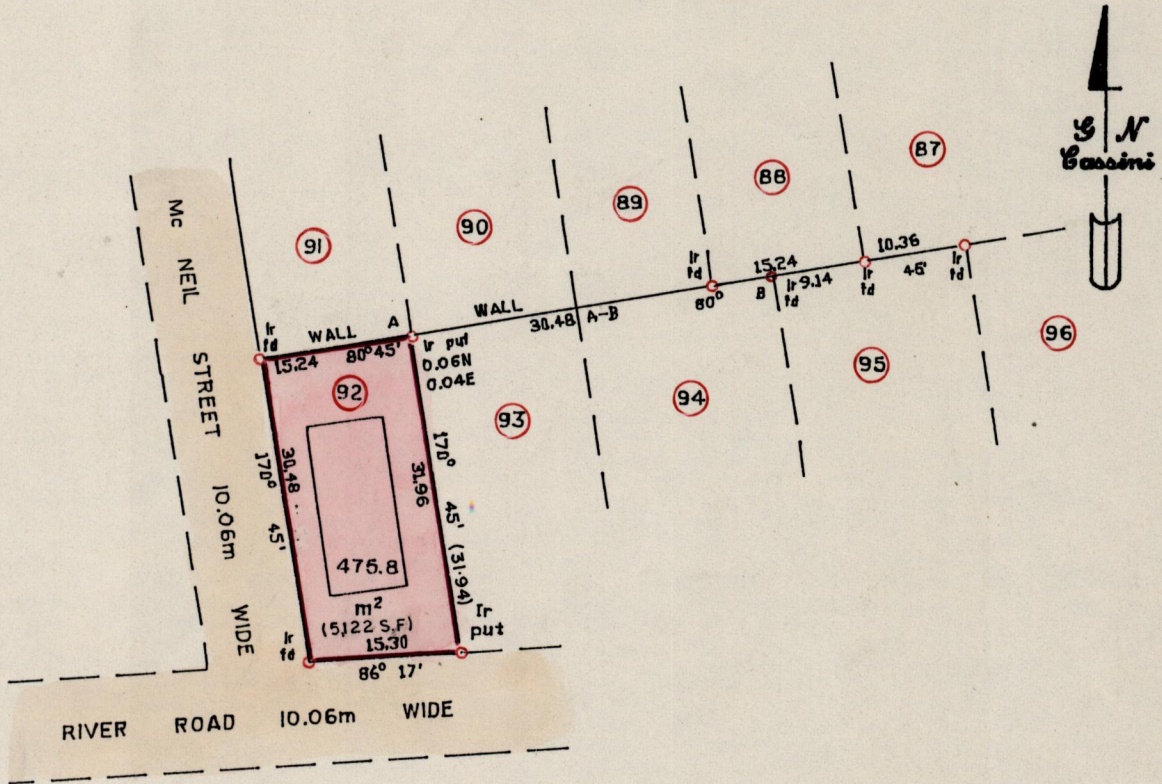
R.P.O. Vol. II  
C.T. Vol. 1147

Fol. 389  
Fol. 141

Borough of Arima  
County of St. George  
Cadastral Sheet B.25.A

24C  
2/c

Vide Plan P 61 A.



Bearings are Cassini Grid based on Solar Observations

Approved *[Signature]*  
Director of Surveys  
97/8/13

SCALE 1 : 750

**Keith Marcellus Scott**  
Licensed Land Surveyor  
93A River Road, Arima.

Note : To obtain compass bearings add/subtract 10 minutes Distances are in metres.

PLAN of a Parcel of land coloured pink in the Borough of Arima  
Containing four hundred and seventy-five point eight square metres  
Surveyed by me, with due authority, in Oct 1995 at the request of Randolph Scott  
I certify that I have complied with rule 76 under section 14(2)(d) of the  
Land Surveyors' Ordinance 1952, and that this plan is correct.

Checked by *[Signature]* 14/3/97

*[Signature]*

Entered .....

Land Surveyor, Trinidad and Tobago *October 27, 1995*



Original Plan P. G. I. A.

B. 1. 1. 1.

700

