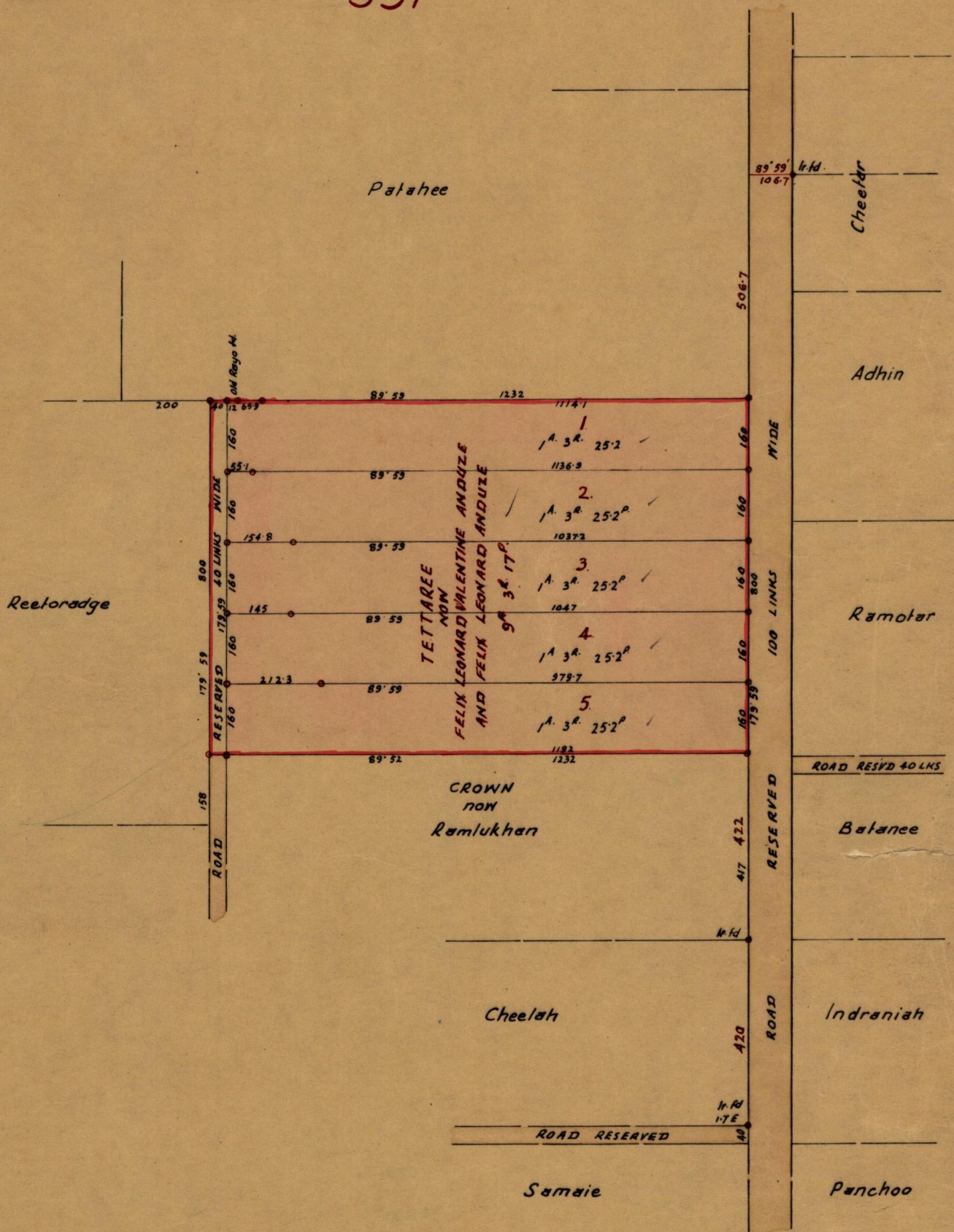


357 BK 957

132

G.N.



Approved

Frederic E. Farrell
Director of Surveys
13/12/1961.

Note: To obtain compass bearing add one minute.
o Denotes Iron put.

Scale 1:2500
Distances are in links.

PLAN of 5 Parcels of land coloured pink in the Ward of NAPARIMA

Containing ONE Acre THREE Roods and TWENTY-FIVE POINT TWO Perches each

Surveyed by me with due authority in June 1961.

I certify that I have complied with rule 76 under Section 14(2)(d) of the Land Surveyors Ordinance 1952, and that this plan is correct.

Checked by

[Signature] 13.10.61

Entered

[Signature]
13th September 1961

Aug - Bh 323 : 172

12.11.19

12.11.19