

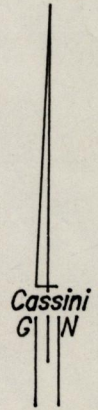
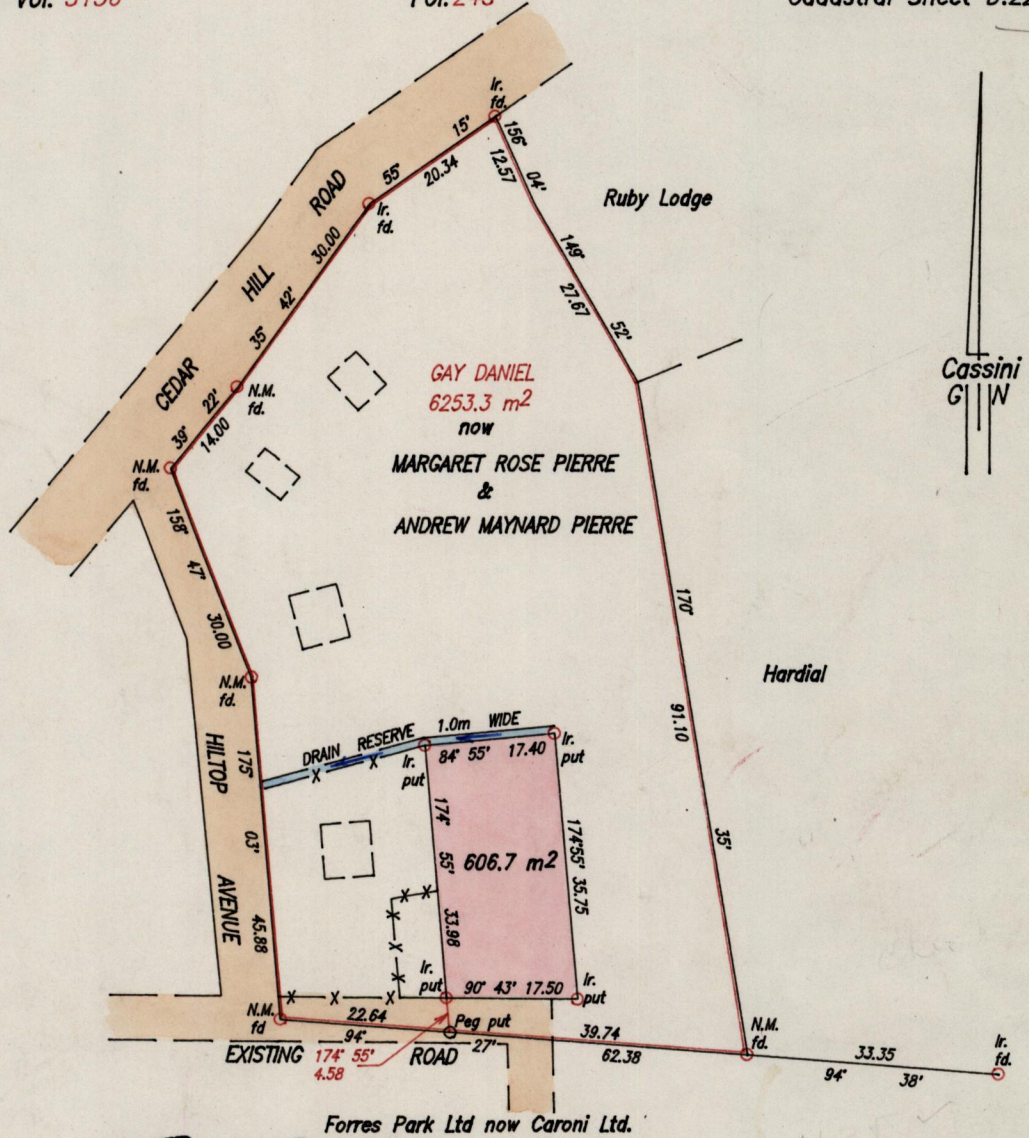
357

737

R.P.O. Vol.
C.T. Vol. 3156

Fol.
Fol. 245

Ward of Pointe-a-Pierre
County of Victoria
Cadastral Sheet D.22.G. 48E
49



Approved. *Ch. Anshel*
Director of Surveys
970522

X—X—X—Wire Fence

SCALE 1/1000
Distances are in Metres

Bearings are based on Solar Observations

PLAN of a Parcel of land coloured pink in the Ward of Pointe-a-Pierre
Containing six hundred and six point seven square metres
Surveyed by me, with due authority, in May 1996

I certify that I have complied with rule 76 under section 14(2)(d) of the
Land Surveyor's Ordinance 1952, and that this plan is correct.

Checked by *19/5/97* *Kelvin Romeo*

Entered Land Surveyor, Trinidad & Tobago. 20th June 1996.

Original Survey Bk 1132 fol. 15

