

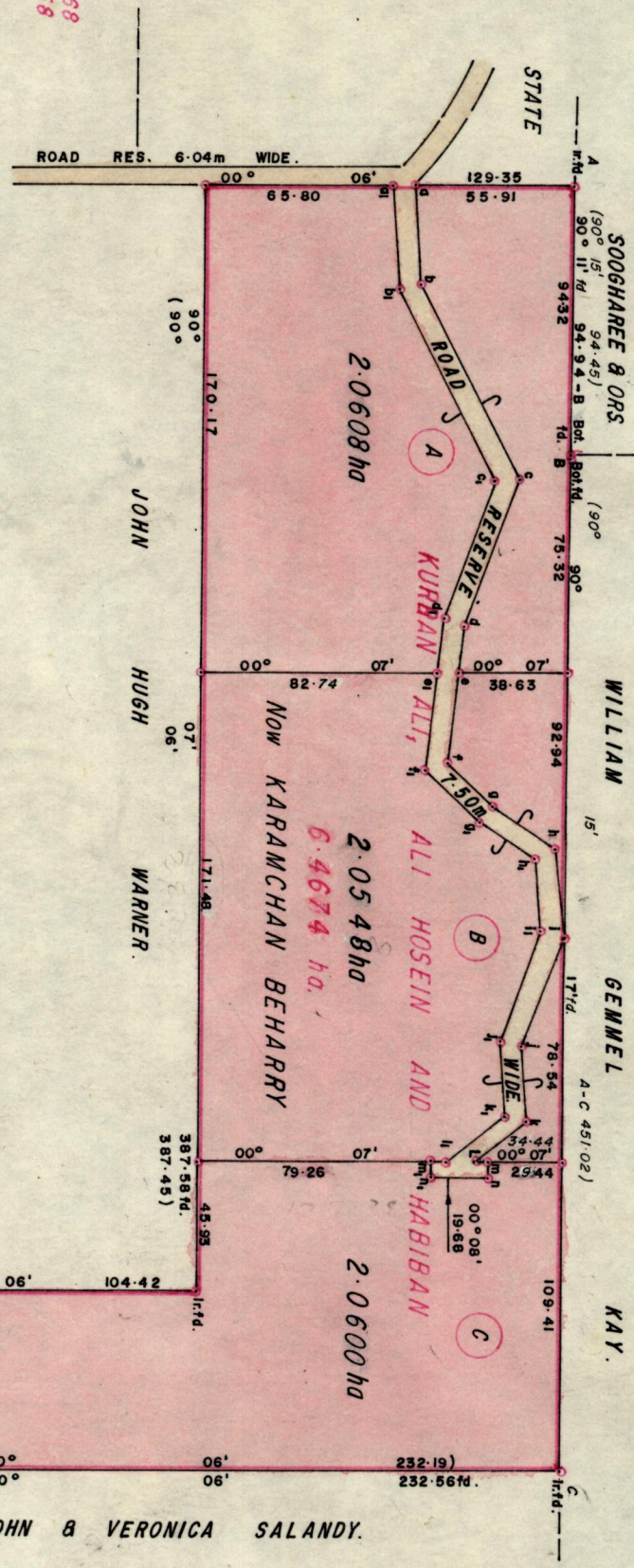
789

957

Wide Bk. 568  
Vol. 158

R.P.O. Vol. 593 Fol. 181  
C.T. Vol. 1105 Fol. 405

Ward of Siparia.  
County of St. Patrick.  
Cadastral Sheet G.17.L. 73B  
4/c



Approved  
*James Cleo*  
Ap. Director of Surveys. 20.12.12

Bearings are based on Solar Observations. (Cassini Grid.)

• Denotes Iron put except otherwise stated.

PLAN of 3 Parcels of land coloured Pink in the Ward of Siparia.

Containing six point one seven five six hectares.

Surveyed by me, with due authority in May, 1990

I certify that I have complied with rule 76 under Section 14(2)(d) of the Land

Surveyors' Ordinance 1952 and that this plan is correct.

Checked by *James Cleo*

Entered on.....

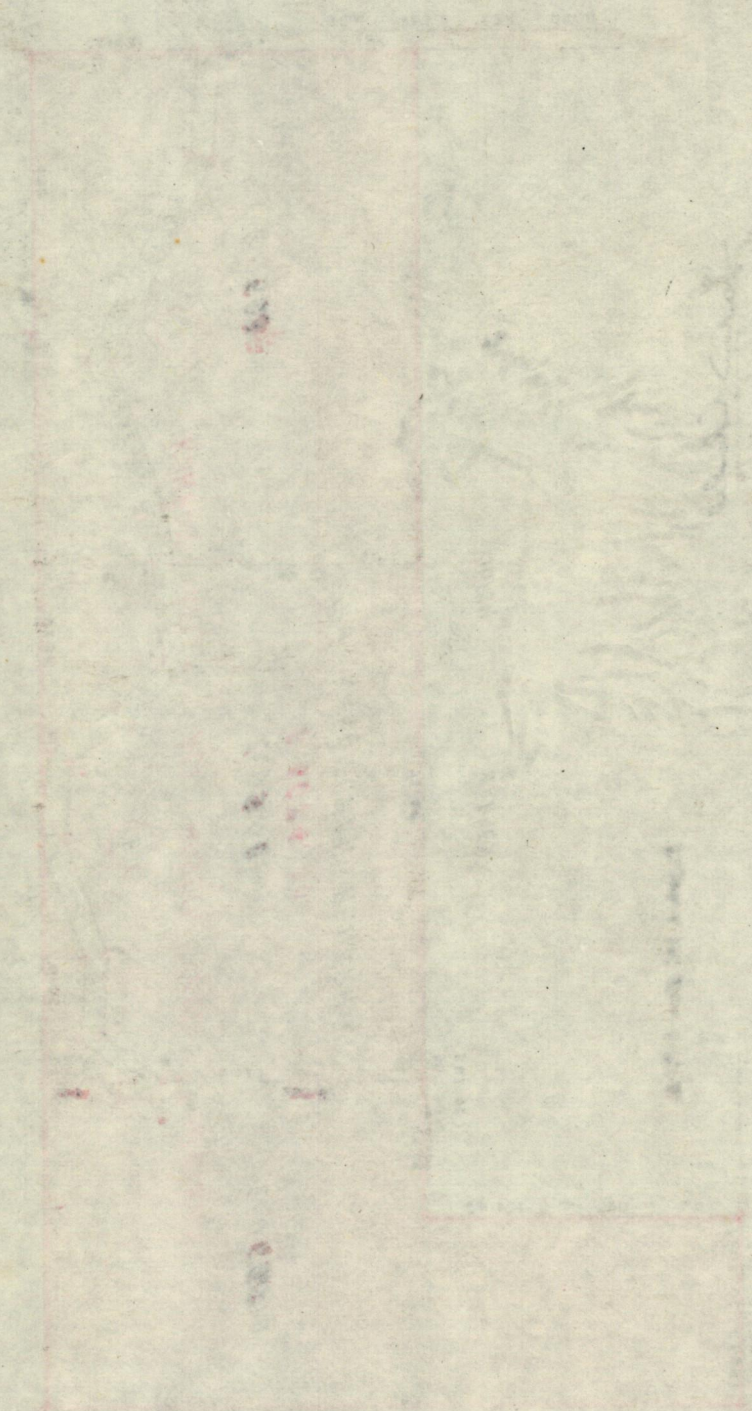
*Markham Nicos*  
Land Surveyor Trinidad & Tobago. Sept. 3rd 1990

Distances are in metres.  
SCALE: 1/2500

STA.	BEAR.	DIST.
a - b	86°42'	34.91
b - c	62°33'	76.94
c - d	110°34'	53.93
d - e	96°42'	16.77
e - f	96°47'	32.22
f - g	43°16'	22.61
g - h	33°36'	27.57
h - i	85°02'	30.36
i - j	115°37'	41.25
j - k	87°21'	27.01
k - L	141°48'	23.21
m - n	90°08'	5.00
L - L	00°07'	9.68
a - a	00°06'	7.64
q1 - b1	86°42'	36.99
b1 - c1	62°33'	75.18
c1 - d1	110°34'	51.47
d1 - e1	96°42'	18.57
e1 - e	00°07'	7.65
e1 - f1	96°47'	35.18
f1 - g1	43°16'	27.09
g1 - h1	33°36'	24.55
h1 - i1	85°02'	24.60
i1 - j1	115°47'	41.12
j1 - k1	87°21'	27.01
k1 - l1	141°49'	25.77
l1 - m1	90°08'	5.00
m1 - n1	00°07'	5.00
n1 - l1	00°07'	5.00



Original Survey BK 568 Lot. 158



100

100

100