

No 23881

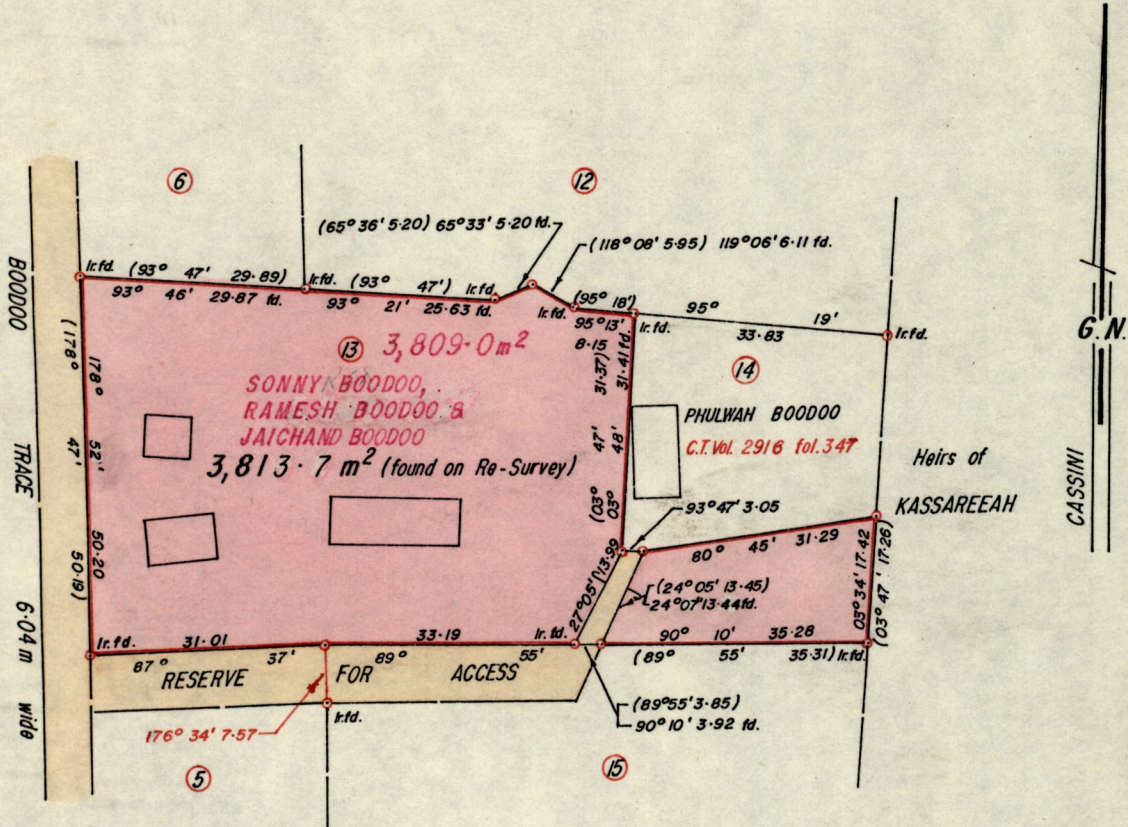
957

766

R.P.O. Vol.  
C.T. Vol. 2924

Fol.  
Fol. 253

Ward of *Pointe-a-Pierre*  
County of *Victoria*  
Cadastral Sheet D.22.C.  $\frac{43F.}{3/d.}$



Approved

*Louis Charles*  
Director of Surveys  
90.11.11

• Denotes Iron put except otherwise stated.

Bearings are based on Solar Observations (Cassini Grid)

SCALE 1:1000

Note: To obtain compass bearings add/subtract

minutes

Distances are in metres

PLAN of a Parcel of land coloured pink in the Ward of *Pointe-a-Pierre*  
Containing three thousand, eight hundred and thirteen point seven square metres  
Re-defined by me, with due authority, in July 1988

I certify that I have complied with rule 76 under section 14(2)(d) of the  
Land Surveyors' Ordinance 1952, and that this plan is correct.

Checked by *Shamchand*  
15/12/90

*Jankaran Mees*

Entered .....

Land Surveyor, Trinidad *Jan. 19<sup>th</sup> 1990*



Original Survey Bk 1141 Lbl. 150

305

305

Vertical text bleed-through from the reverse side of the page, appearing as faint, mirrored characters.

