

Orig. P.A. 64

No 25012

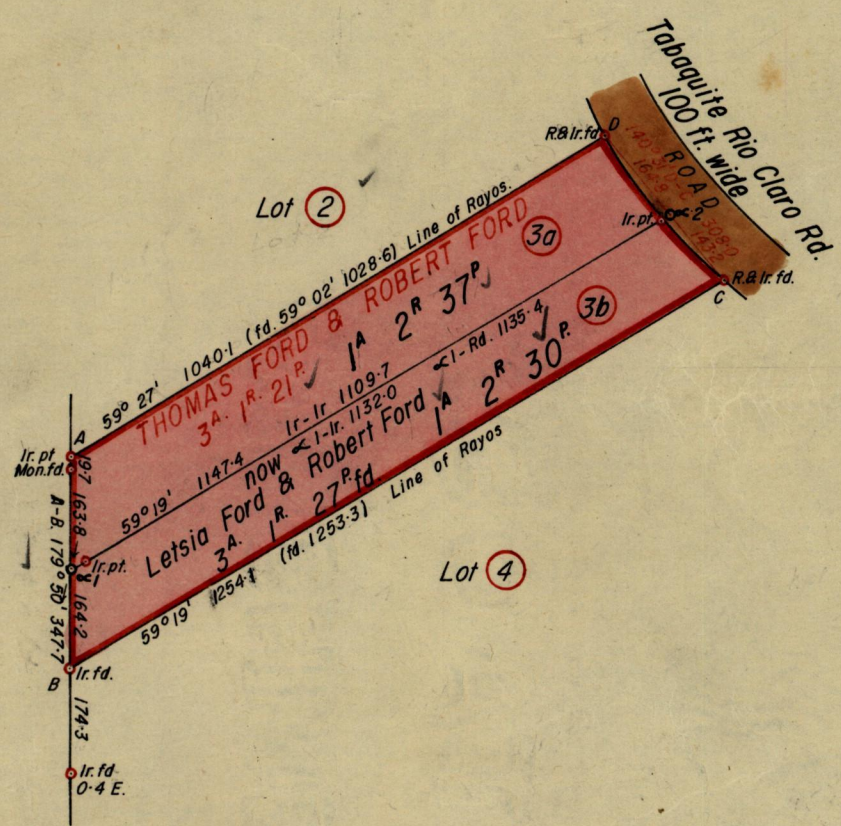
957

75

R.P.O. Vol.
C.T. Vol. 1658 ✓

Fol.
Fol. 245 ✓

Ward of Charuma
County of Nariva
Cadastral Sheet E. 21 N



Approved

L. A. Farrell

Director of Surveys
20.2.69

SCALE 1: 2500 ✓

Note: To obtain compass bearings add/subtract 10 minutes Distances are in links ✓

PLAN of ²/₂ Parcelsof land coloured pink in the Ward of Charuma
Containing together three acres, one rood and twenty seven perches. ✓

Surveyed by me, with due authority, in April 1968

I certify that I have complied with rule 76 under Section 14 (2) (d) of the Land
Surveyors' Ordinance 1952, and that this plan is correct.

Checked by *J. J. ...* 19/2/69

John ...

Entered

Land Surveyor, Trinidad *1st February* 1969.