

No 43079

957

715

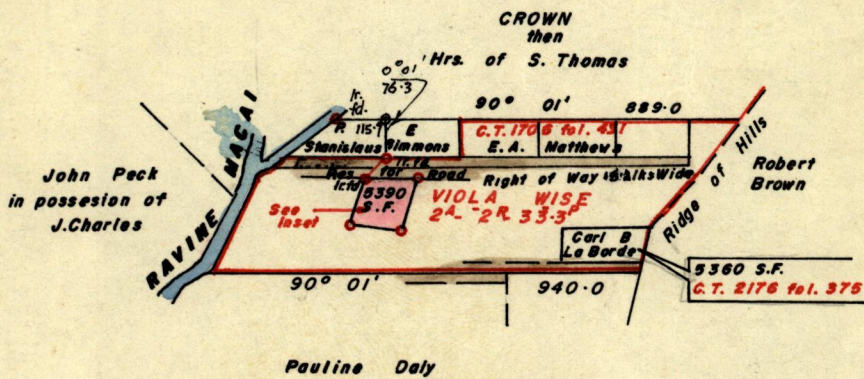
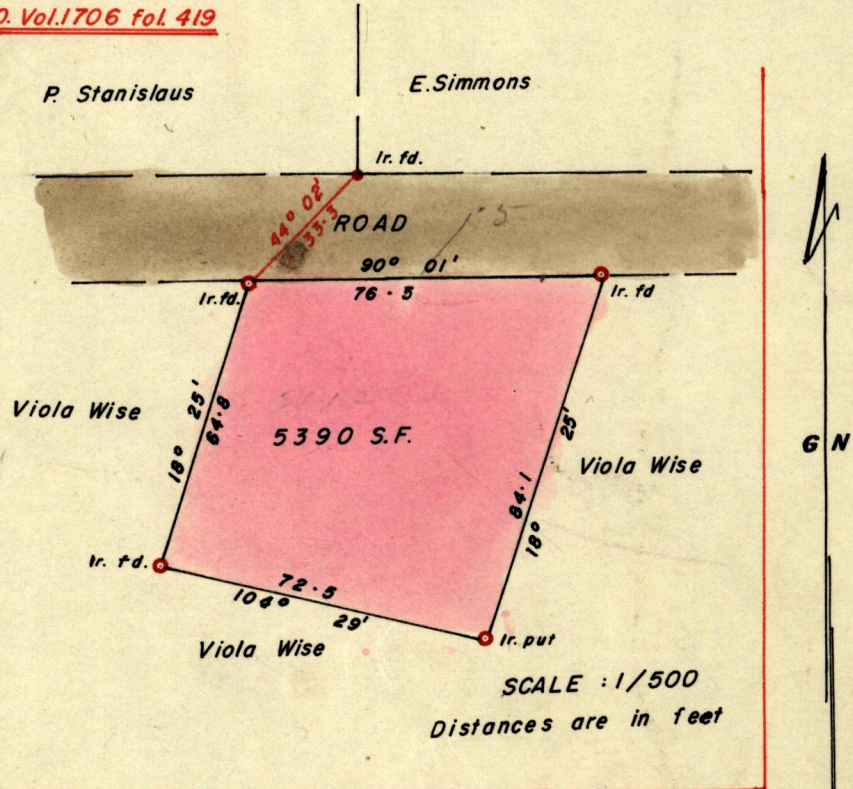
R.P.O. Vol. 23
C.T. Vol. 1060

Fol. 33
Fol. 241

Ward of St. Anns
County of St. George
Cadastral Sheet A. 20. G.

Rem. Portion Plan - R.P.O. Vol. 1706 fol. 419

INSET



Approved

John Samuel
Director of Surveys

10.11.80.

SCALE 4 chains to 1 inch

Note: To obtain compass bearings ~~add~~/subtract 1 minutes Distances are in Links

PLAN of a Parcel of land coloured Pink in the Ward of St. Anns

Containing Five thousand, three hundred and ninety square feet

Surveyed by me, with due authority, in August, 1979

I certify that I have complied with rule 76 under Section 14 (2) (d) of the Land Surveyors' Ordinance 1952, and that this plan is correct.

Checked by *L.J.D. 10/11/80*

Theresa A. Priddy
Land Surveyor, Trinidad 10.11.1980

Original in Bk 991 fo. 9