

Nº 49733

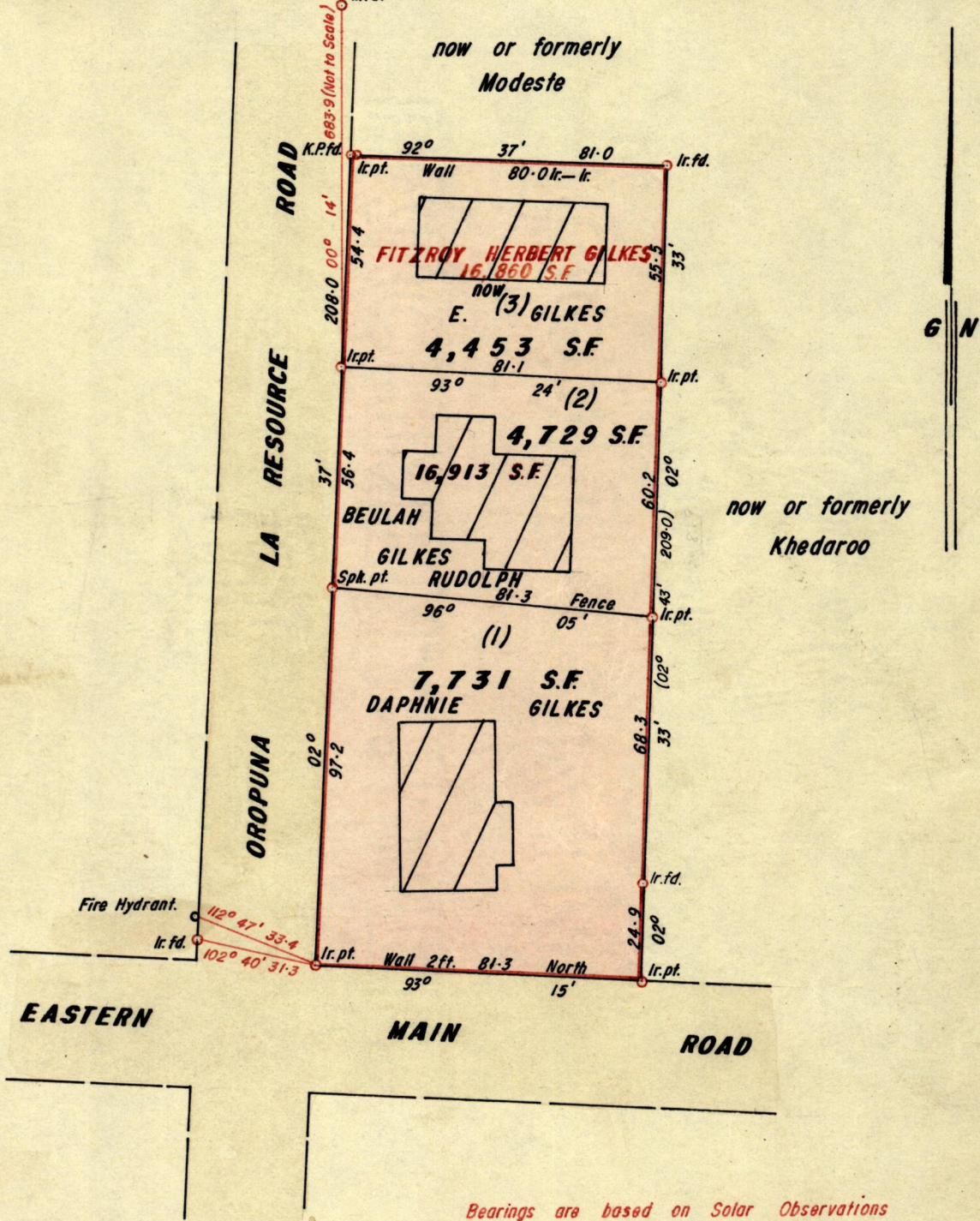
357

712

R.P.O. Vol. 1166  
C.T. Vol.

Fol. 207  
Fol. Ir.f.d.

Ward of Arima.  
County of St. George.  
Cadastral Sheet B. 24. C.



Approved

*[Signature]*  
 5. 11. 80. Director of Surveys

SCALE 1:500.

Note: To obtain compass bearings add ~~subtract~~ 9 minutes Distances are in feet.

PLAN of a Parcel of land coloured pink in the Ward of Arima.  
 Containing together sixteen thousand nine hundred and thirteen square feet.  
 Surveyed by me, with due authority, in September 1979.

I certify that I have complied with rule 76 under Section 14 (2) (d) of the Land Surveyors' Ordinance 1952, and that this plan is correct.

Checked by *[Signature]* *[Signature]*

Entered..... Land Surveyor, Trinidad 1st October 1980



Original in BK 886 to 109

20

1

1