

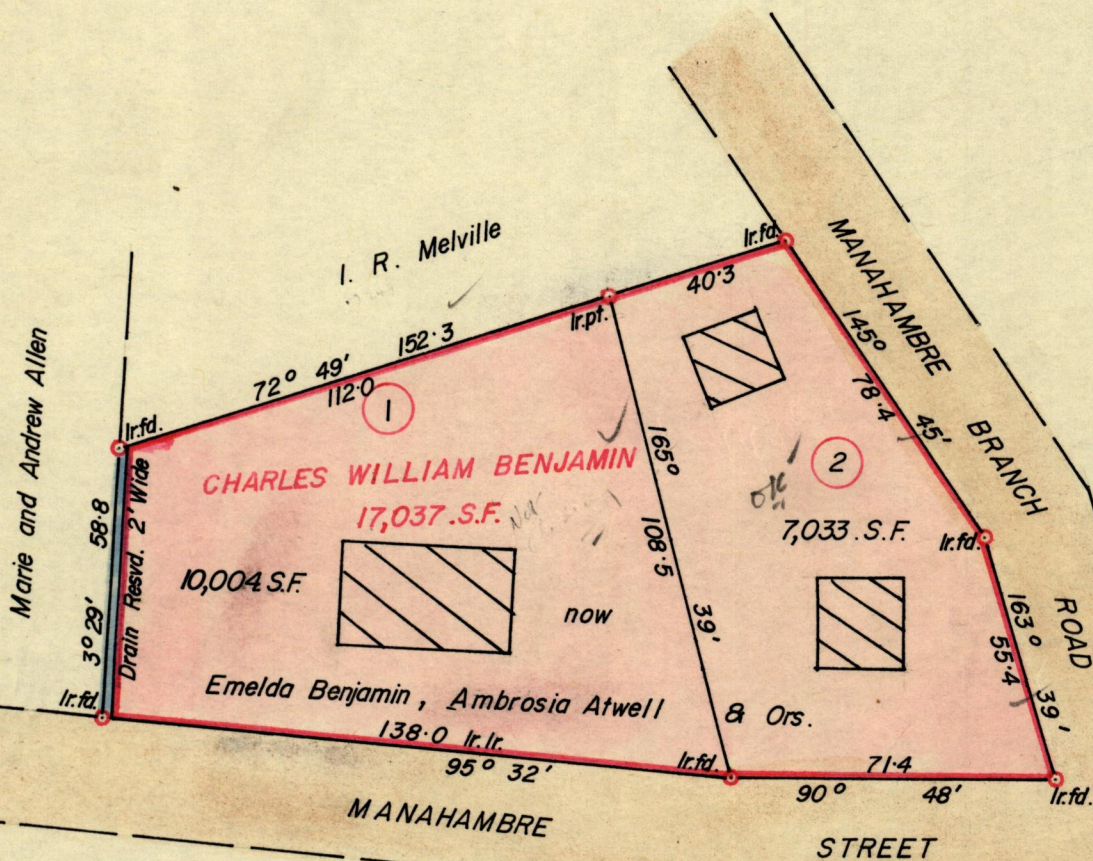
Nº 42849

957

64

R.P.O. Vol. Fol.
C.T. Vol. 2115 Fol. 489

Ward of Savana Grande.
County of Victoria.
Cadastral Sheet G 4. J.



Approved

John Samuel
Director of Surveys
7.6.79

SCALE 1:500.

Note: To obtain compass bearings add/subtract 1 minutes Distances are in Feet.

PLAN of 2 Parcels of land coloured pink in the Ward of Savana Grande.

Containing together seventeen thousand and thirtyseven sq.ft.

Surveyed by me, with due authority, in Dec. 1978.

I certify that I have complied with rule 76 under Section 14 (2) (d) of the Land Surveyors' Ordinance 1952, and that this plan is correct.

Checked by *L.W. 16/5/79*

S. Balliecharen

Entered.....

Land Surveyor, Trinidad 20/11/1979

LANDS AND SURVEYS VAULT RECORDS

Original in Bk 1049 fo 174

89

174

THE UNIVERSITY OF CHICAGO PRESS