

N^o 40647

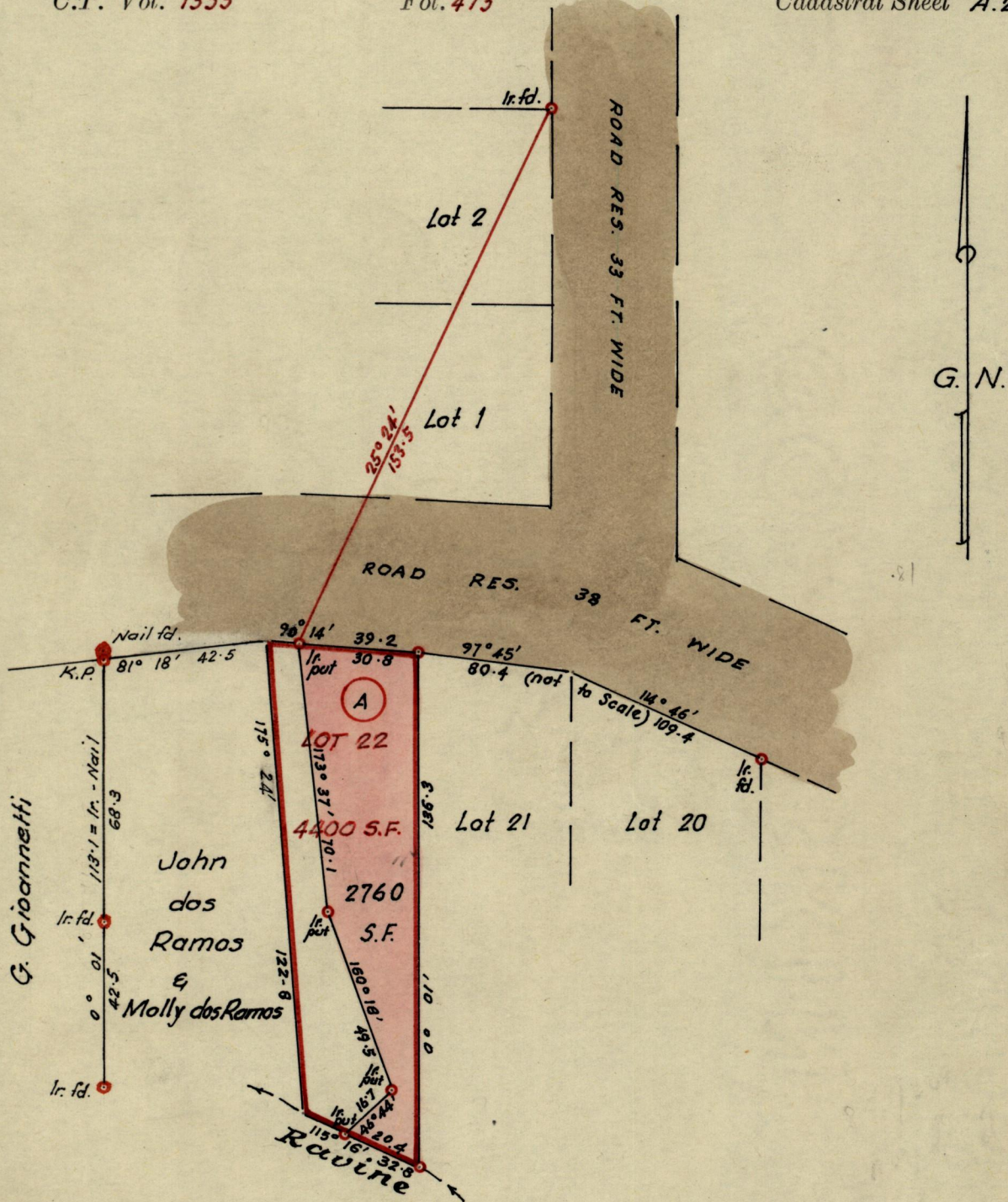
957

628

R.P.O. Vol. 666
C.T. Vol. 1353

Fol. 371
Fol. 473

Ward of St. Ann's
County of St. George
Cadastral Sheet A.20.c



Approved *John Samuel*
 Director of Surveys
 20.11.79

SCALE : 1/500

Note: To obtain compass bearings ~~add~~ subtract 1 minutes Distances are in feet

PLAN of a Parcel of land coloured pink in the Ward of St. Ann's
 Containing two thousand, seven hundred & sixty square feet
 Surveyed by me, with due authority, in September 1979.

I certify that I have complied with rule 76 under Section 14 (2) (d) of the Land Surveyors' Ordinance 1952, and that this plan is correct

Checked by *S. H. 15/11/79*

J. R. Jardine
 Land Surveyor, Trinidad
 16th Oct. 1979

Original in K.S. 58