

Nº 4015

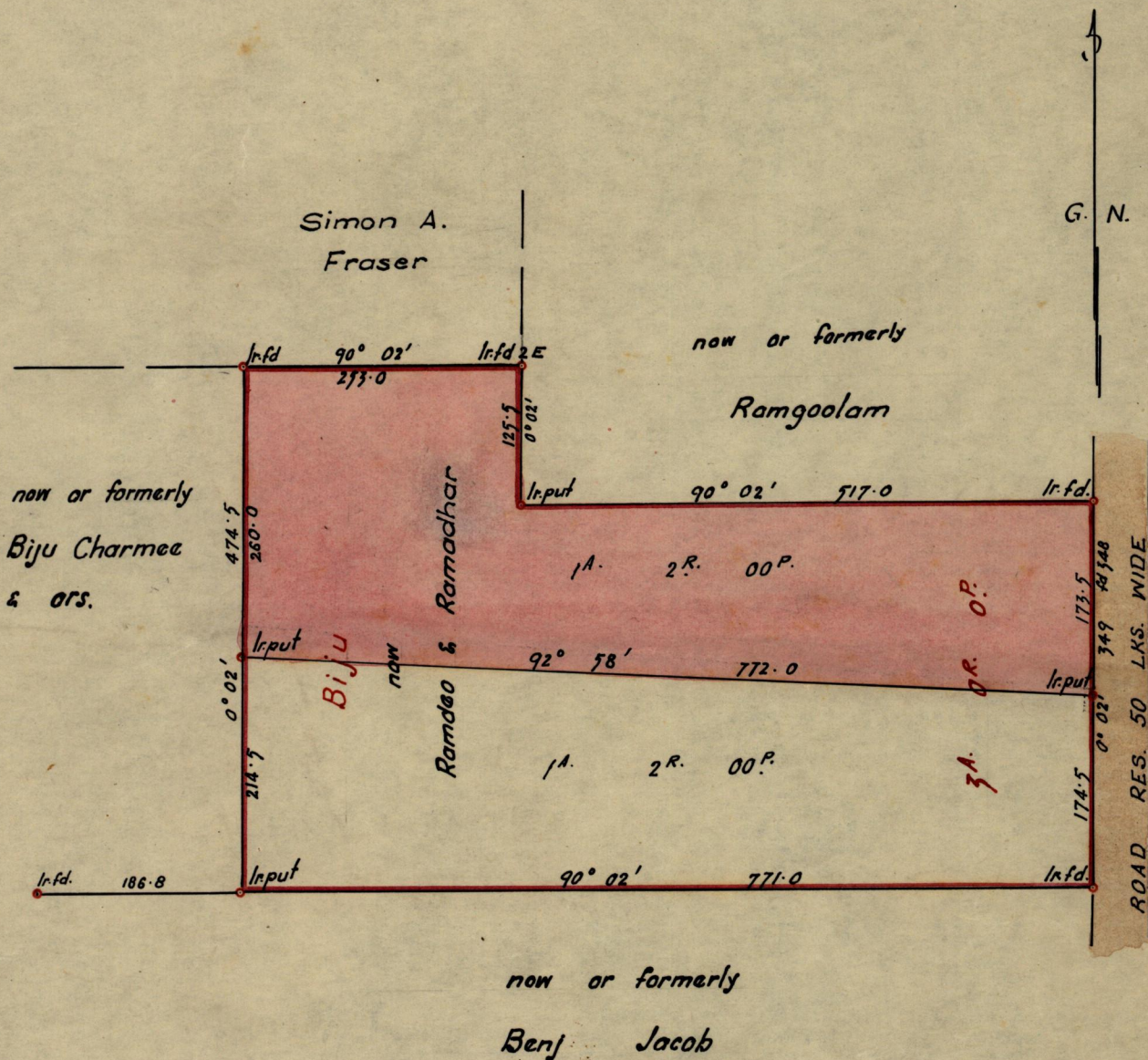
957

6

R.P.O. Vol.  
C.T. Vol. 743

Fol.  
Fol. 37

Ward of Siparia  
County of St. Patrick  
Cadastral Sheet G-13 K



Approved

*Fred. E. Farrell*

Director of Surveys  
19/5/61

SCALE ~ 1:1250  
minutes

Distances are in links

Note: To obtain compass bearings add/subtract 4  
PLAN of a Parcel of land coloured pink  
Containing one acre and two roods

in the Ward of Siparia

Surveyed by me, with due authority, in October 1960

I certify that I have complied with rule 76 under Section 14 (2) (d) of the Land Surveyors' Ordinance 1952, and that this plan is correct.

Checked by *AdF*

*Albert H. Haynes*

Entered *18.5.61*

Land Surveyor, Trinidad *25th October 1961*