

Nº 173

357

56

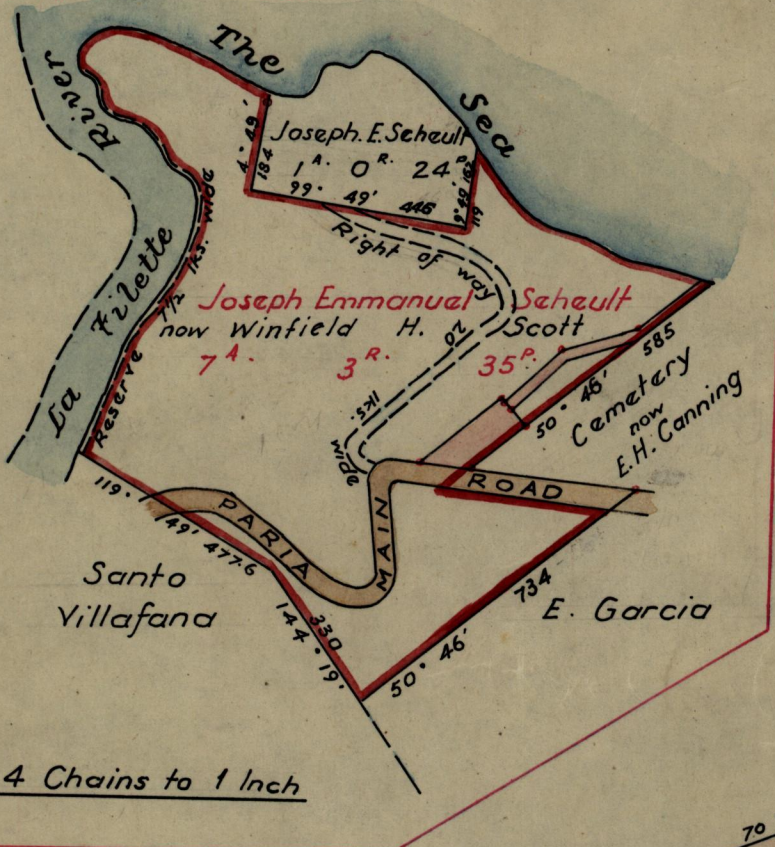
R.P.O. Vol.

Fol.

C.T. Vol. 1049

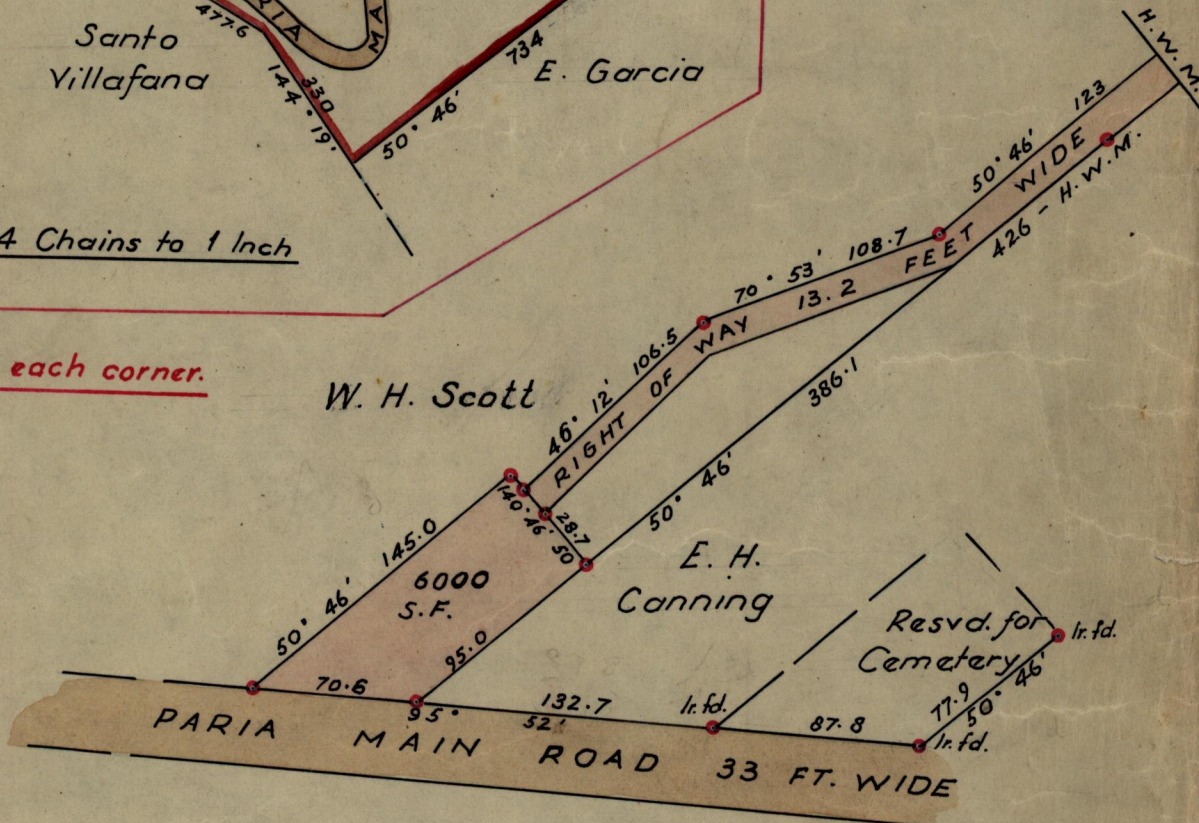
Fol. 303

Ward of Blanchisseuse
County of St. George
Cadastral Sheet B. 3. P.



SCALE ~ 4 Chains to 1 Inch

Note - Iron put at each corner.



Approved

Lud. G. Powell

Director of Surveys
26/9/59

Note: To obtain compass bearings add/subtract

SCALE 1-1000

minutes

Distances are in feet

PLAN of a Parcel of land coloured pink in the Ward of Blanchisseuse
Containing ten thousand, four hundred & sixty-four Sq. feet
Surveyed by me, with due authority, in July 1959

I certify that I have complied with rule 76 under Section 14 (2) (d) of the Land
Surveyors' Ordinance 1952, and that this plan is correct.

Checked by *G.D.F.*

P. Douglas

Entered

Land Surveyor, Trinidad Sep't. 7th 19.59