

357

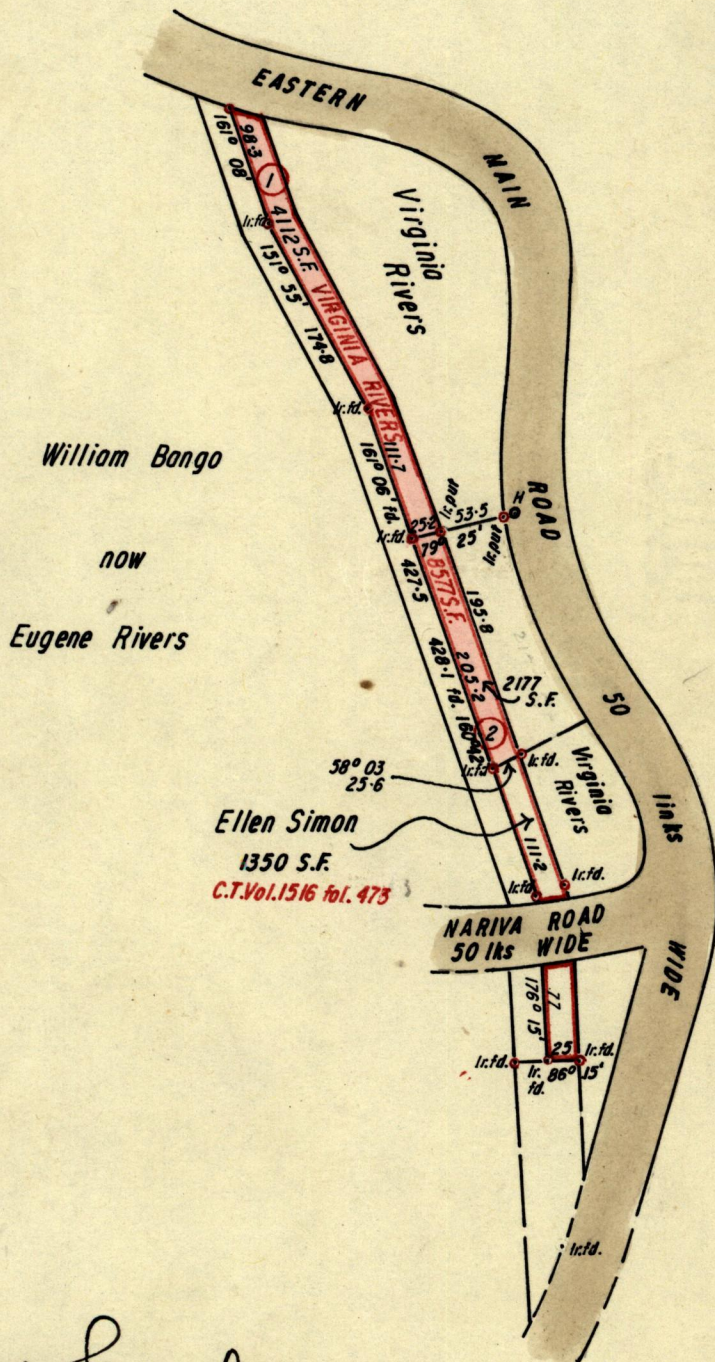
551

Nº 42201

R.P.O. Vol.
C.T. Vol. 1297

Fol.
Fol. 421

Ward of Turure
County of St Andrew
Cadastral Sheet E.8.B&F



Approved

John Samuel
 6.6.79. Director of Surveys

SCALE 1:1250

Note: To obtain compass bearings add/subtract 19 minutes Distances are in links

PLAN of Parcel of land coloured pink in the Ward of Turure

Containing together six thousand two hundred and eighty nine square feet

Surveyed by me, with due authority, in November 1962

I certify that I have complied with rule 76 under Section 14 (2) (d) of the Land Surveyors' Ordinance 1952, and that this plan is correct.

Checked by *d.J.W. 6/6/79.*

John Samuel
 18th August 1979
 Land Surveyor, Trinidad.

Entered.....

Original in Bk 940 fo 122

PLATE 27



The bottom portion of the page contains several lines of extremely faint, illegible text. The text appears to be organized into a list or a series of entries, possibly describing the object shown in the diagram above. The lines are too light to read clearly, but they seem to follow a structured format, perhaps including measurements or descriptive notes.