

957

L. & S.—54

526

No 43399

City of Port - of - Spain

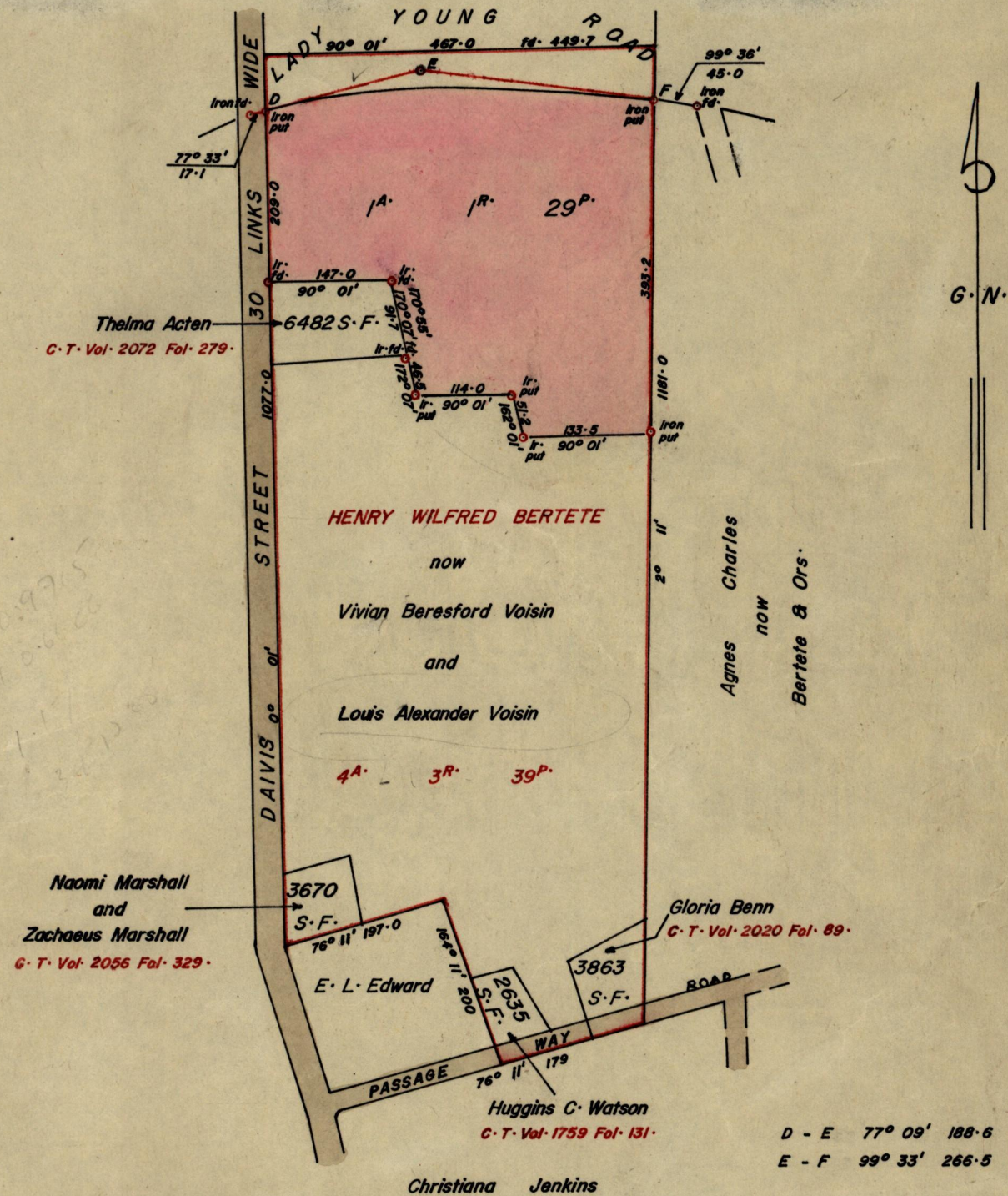
County of St. George

Cadastral Sheet A. 20. G.

R.P.O. Vol. 549. Fol. 593.

C.T. Vol. Fol.

STATE LAND



Approved

Ed. E. Samml
Director of Surveys
21.5.79

SCALE 1/1500.

Note: To obtain compass bearings ~~add~~ subtract / minutes Distances are in Links.

PLAN of a Parcel of land coloured Pink in the ~~Ward~~ City of Port - of - Spain.

Containing One Acre, One Rood and Twenty Nine Perches.

Surveyed by me, with due authority, in April, 1979.

I certify that I have complied with rule 76 under Section 14 (2) (d) of the Land Surveyors' Ordinance 1952, and that this plan is correct.

Checked by *PT 18-5-79*

Ed. E. Samml

Entered.....

Land Surveyor, Trinidad 11th May 1979.

Original in Bk 985 fo. 141

130

10000 9M

[Faint, mostly illegible text and markings, possibly bleed-through from the reverse side of the page. Some faint lines and shapes are visible, but no clear text can be transcribed.]