

No 32736

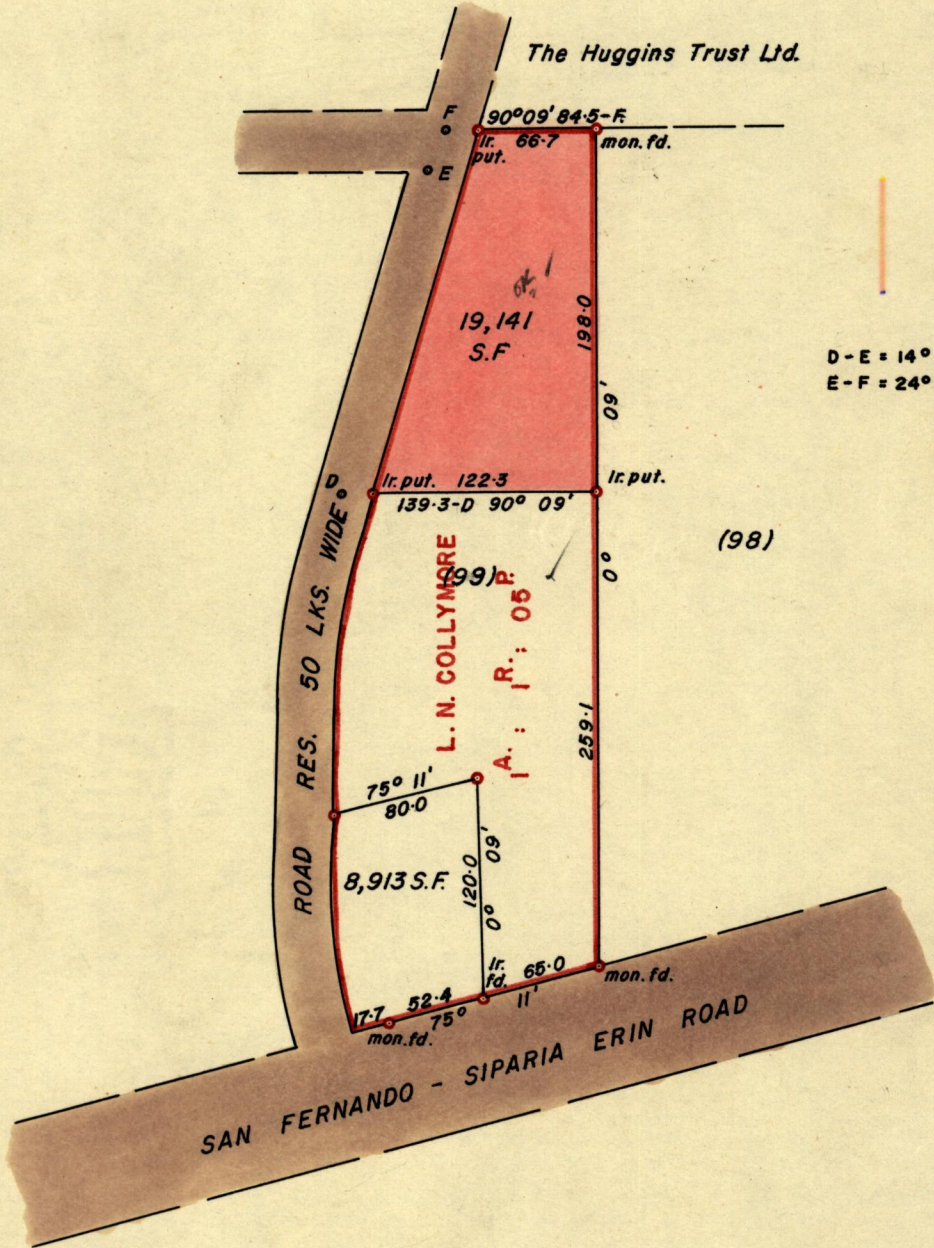
357

506

R.P.O. Vol 2192
C.T. Vol. 2375
2375

Fol. 327
Fol. 543

Ward of Erin
County of St. Patrick
Cadastral Sheet F 25.D



D - E = 14° 28' 182-0
E - F = 24° 35' 23-8

Approved *John Samuel*
20.3.79
Director of Surveys

SCALE 1:1250

Note: To obtain compass bearings add/subtract 9 minutes Distances are in feet.

PLAN of a Parcel of land coloured pink in the Ward of Erin
Containing nineteen thousand one hundred and forty-one square feet.
Surveyed by me, with due authority, in February 1979

I certify that I have complied with rule 76 under Section 14 (2) (d) of the Land Surveyors' Ordinance 1952, and that this plan is correct.

Checked by *L. J. W. 16/4/79*

Entered

Land Surveyor, Trinidad *[Signature]* 19.79

LANDS AND SURVEYS VAULT RECORDS

