

MSP 20/3/78
27

957

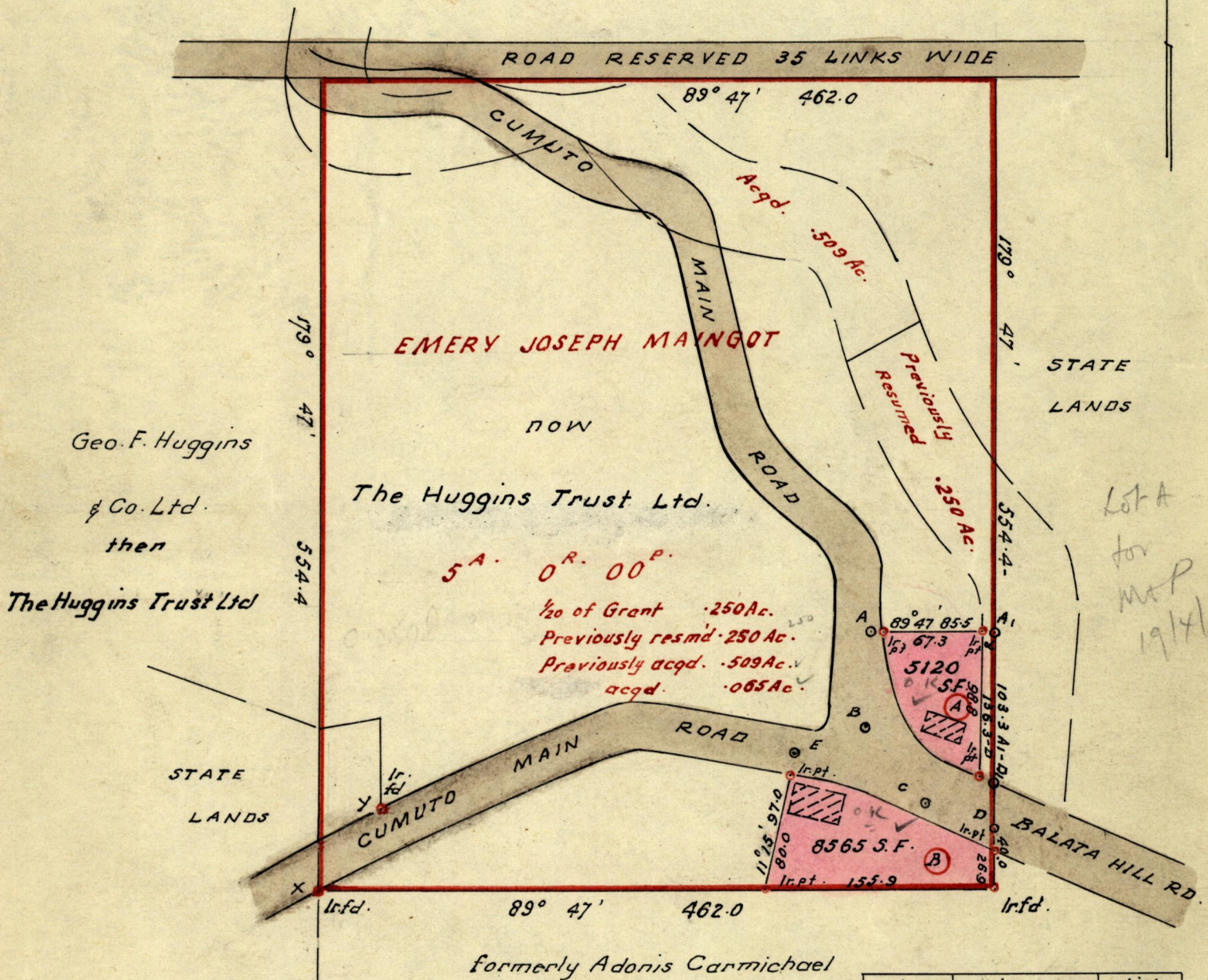
L. & S.—54 418

No 35634

R.P.O. Vol. 136
C.T. Vol. 580

Fol. 385 ✓
Fol. 13 ✓

Ward of Tamana
County of St. Andrew
Cadastral Sheet E. 6. B. G. N.



sta.	bear.	dist.
A - B	181° 51'	64.5
B - C	141° 29'	67.1
C - D	112° 18'	50.0
C - E	291° 23'	97.3
X - Y	36° 31'	69.9
A ₁ - α	269° 47'	8.5

Approved

[Signature]
20.4.78. Director of Surveys

SCALE ~ 1:1250

Note: To obtain compass bearings add/subtract 13 minutes Distances are in feet
PLAN of a Parcel of land coloured pink in the Ward of Tamana
Containing

Surveyed by me, with due authority, in November 1976

I certify that I have complied with rule 76 under Section 14 (2) (d) of the Land Surveyors' Ordinance 1952, and that this plan is correct.

Checked by *[Signature]* 19/4/78

[Signature]
Land Surveyor, Trinidad 20th March 1978

Entered.....

Original in Plan D.C.30

1880

[Faint, illegible text, likely bleed-through from the reverse side of the page]