

No 36964

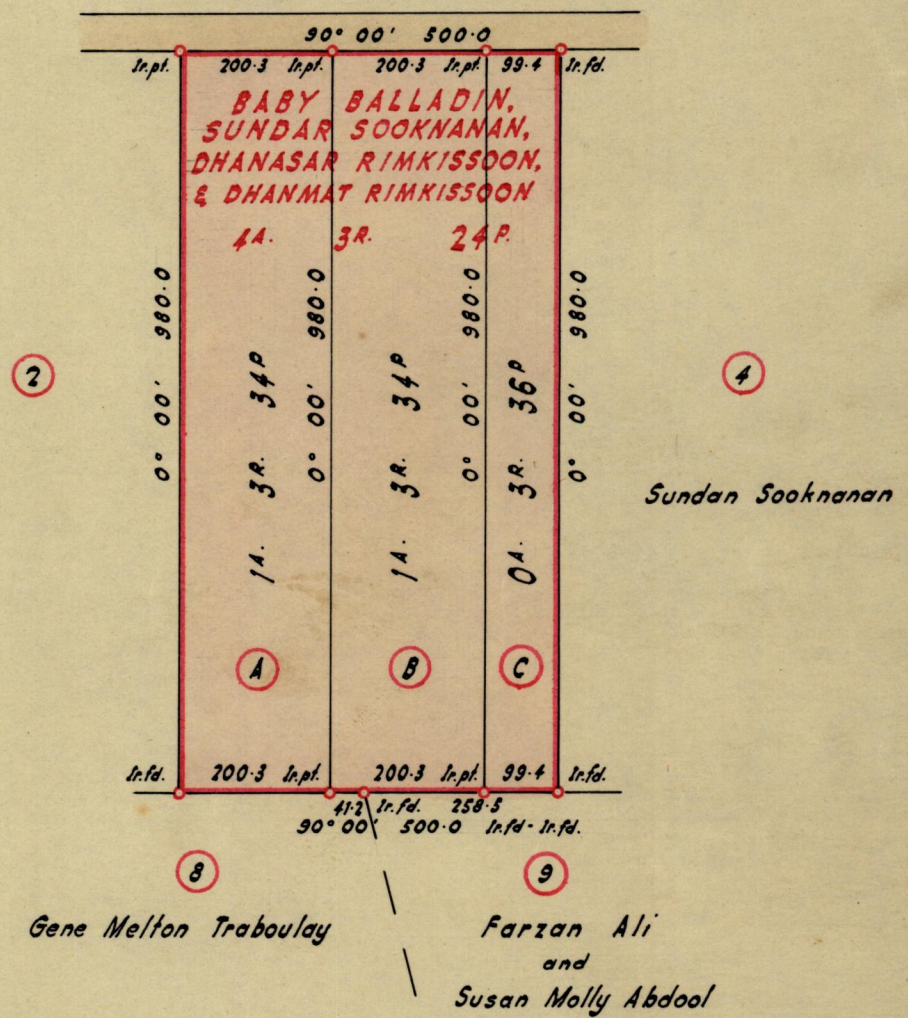
R.P.O. Vol. 152
C.T. Vol. 2179

Fol. 241
Fol. 169

Ward of Siparia
County of St. Patrick
Cadastral Sheet G. 18, D

GN

SEEBALACK TRACE



Approved

Sehul Samuef
31.1.78. Director of Surveys

SCALE - 1 : 2,000

Note: To obtain compass bearings add/subtract - minutes Distances are in Links

PLAN of 3 Parcels of land coloured Pink in the Ward of Siparia
Containing together Four Acres, Three Roods and Twenty-four Perches.
Surveyed by me, with due authority, in November 1975

I certify that I have complied with rule 76 under Section 14 (2) (d) of the Land
Surveyors' Ordinance 1952, and that this plan is correct.

Checked by *L. J. W-30/1/78*

S. Rajeevaran

Entered

Land Surveyor, Trinidad
LANDS AND SURVEYS DEPARTMENT

