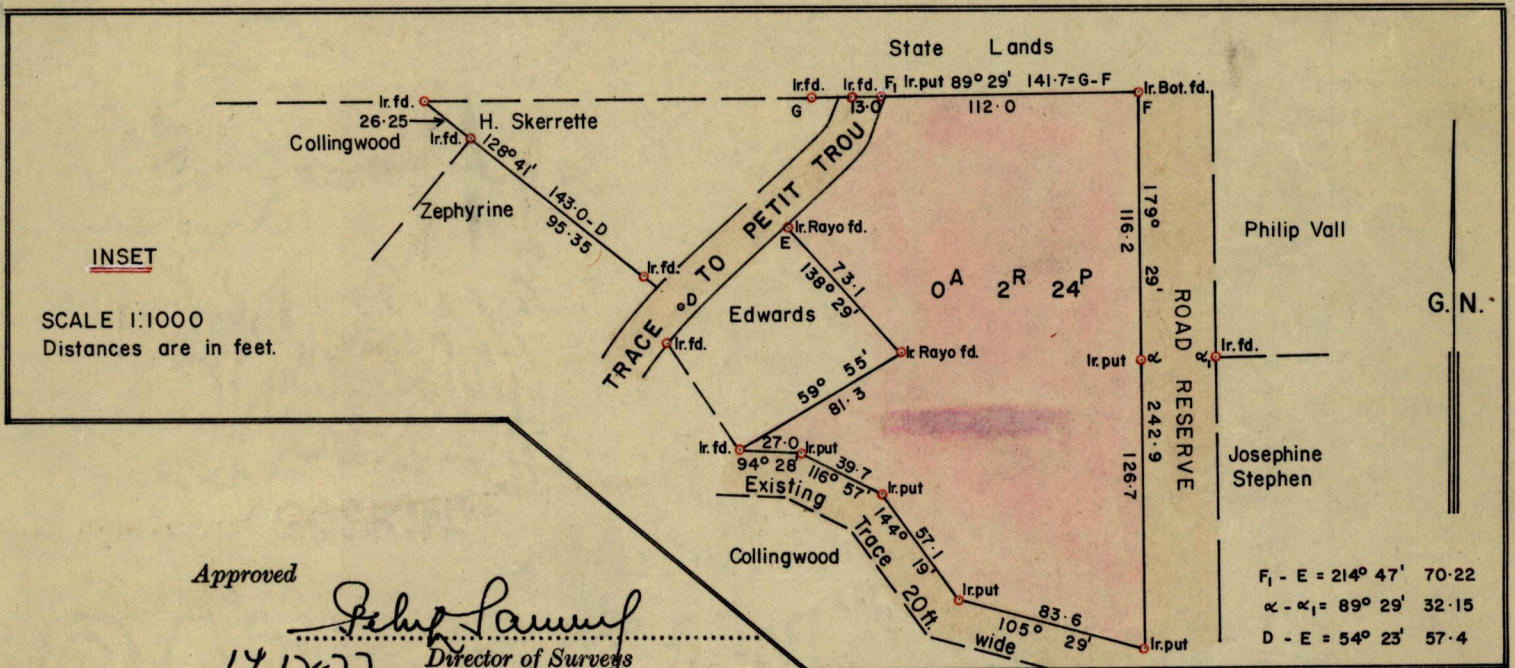
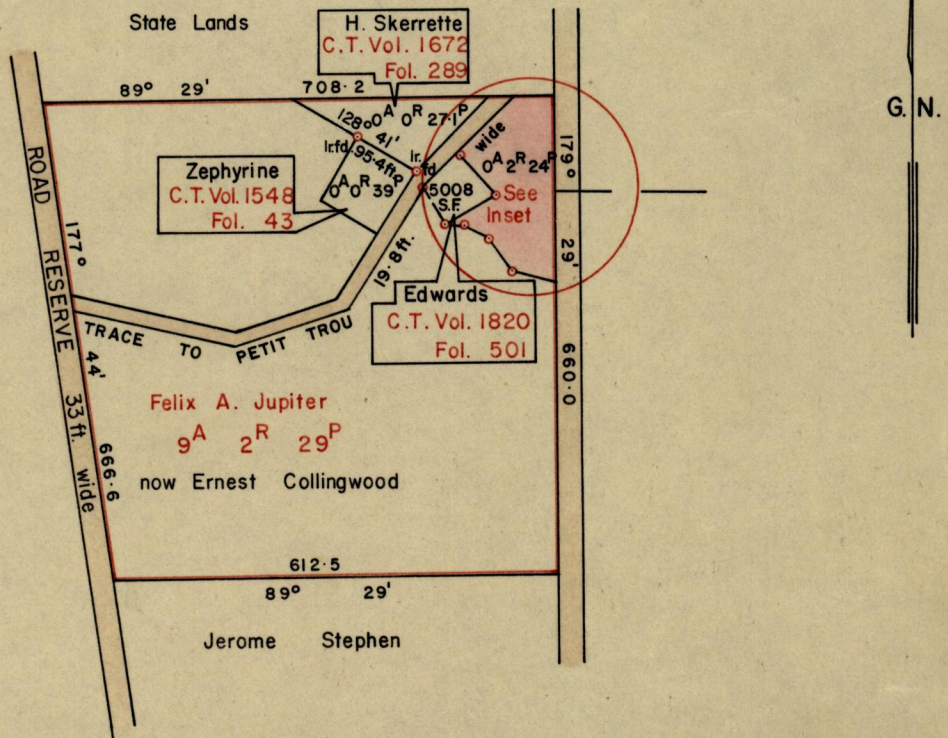


No 37334

R.P.O. Vol. 45  
C.T. Vol.

Fol. 509  
Fol.

Ward of Toco  
County of St David  
Cadastral Sheet C. 5. E.



SCALE 1:1000  
Distances are in feet.

Approved  
*[Signature]*  
14-12-77. Director of Surveys

SCALE: 1 inch = 4 chains

Note: To obtain compass bearings add  $\frac{1}{2}$  31 minutes Distances are in feet.

PLAN of a Parcel of land coloured pink in the Ward of Toco.

Containing two roods and twenty-four perches.

Surveyed by me, with due authority, in October 1977 for

I certify that I have complied with rule 76 under Section 14 (2) (d) of the Land Surveyors' Ordinance 1952, and that this plan is correct.

Checked by *[Signature]* *[Signature]*

Entered *[Signature]* LANDS AND SURVEY RECORDS 1977



10078 375

THE  
OFFICE

[Faint, illegible text and markings, possibly bleed-through from the reverse side of the page]

[Faint, illegible text at the bottom of the page, possibly bleed-through]