

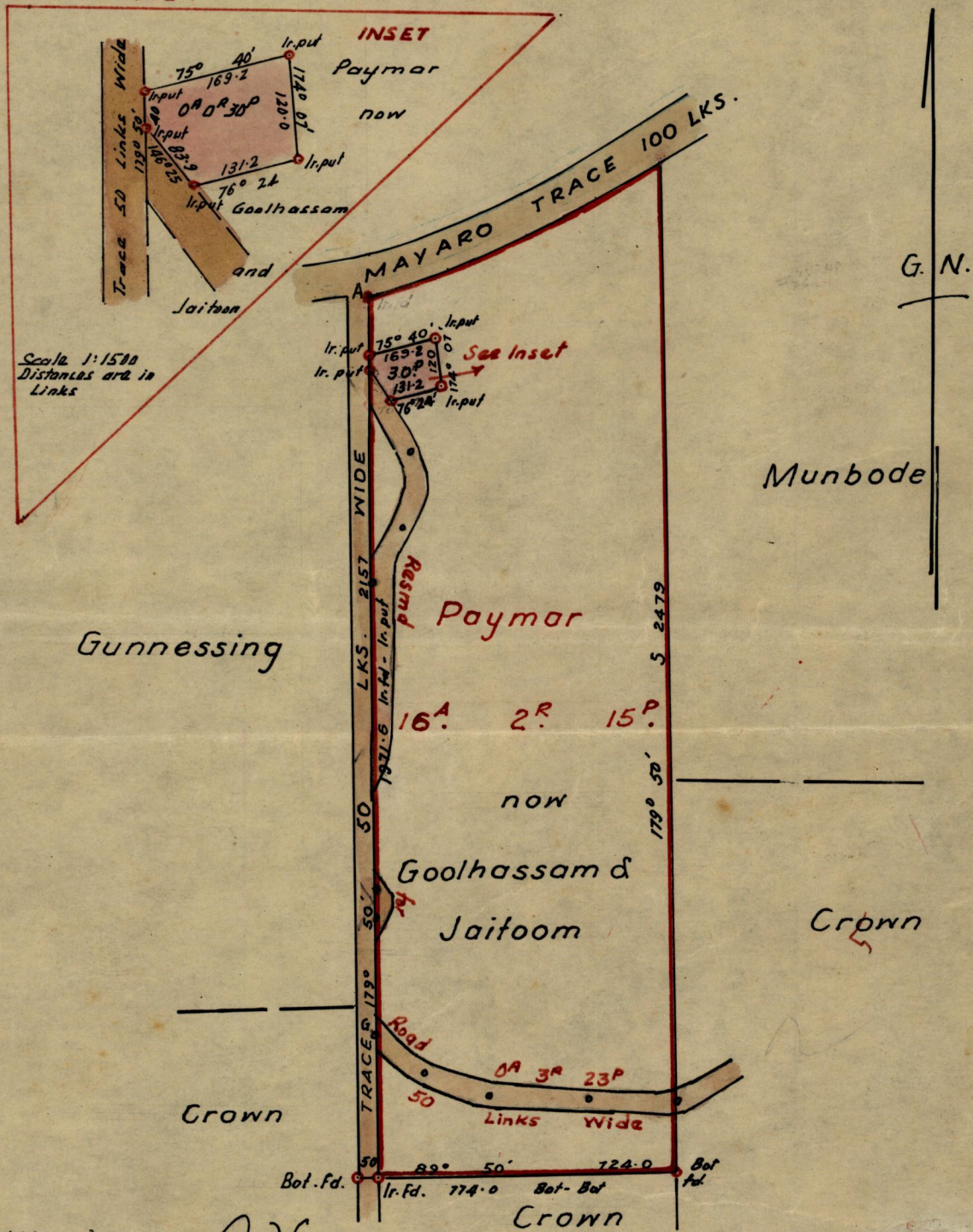
No 3687

957

R.P.O. Vol. 54  
C.T. Vol. 452

Fol. 301  
Fol. 545

Ward of Charuma  
County of Nariva  
Cadastral Sheet H. 2. A. & B.



Approved

*L. H. Small*

Director of Surveys  
27.2.71

SCALE ~ 4 chs = 1 inch  
Distances are in links

Note: To obtain compass bearings add/subtract 10 minutes

PLAN of a Parcel of land coloured Pink in the Ward of Charuma  
Containing Thirty Three Perches

Surveyed by me, with due authority, in December 1960

I certify that I have complied with rule 76 under Section 14 (2) (d) of the Land  
Surveyors' Ordinance 1952, and that this plan is correct.

Checked by *P. J. W. 25/4/71*

*Winston Reece*  
Land Surveyor, Trinidad  
*July 15<sup>th</sup> 1961*

Original in BK 326 fo 233

326

149 337

State of  
County of  
Circuit Court

Vol  
For

Vol  
CT. Vol



Director of Surveys

EST. H. S. ...

Note: To obtain complete details of treatment ...  
 The ... of the ...  
 ... of the ...  
 ... of the ...  
 ... of the ...

12742