

Nº 1664

957

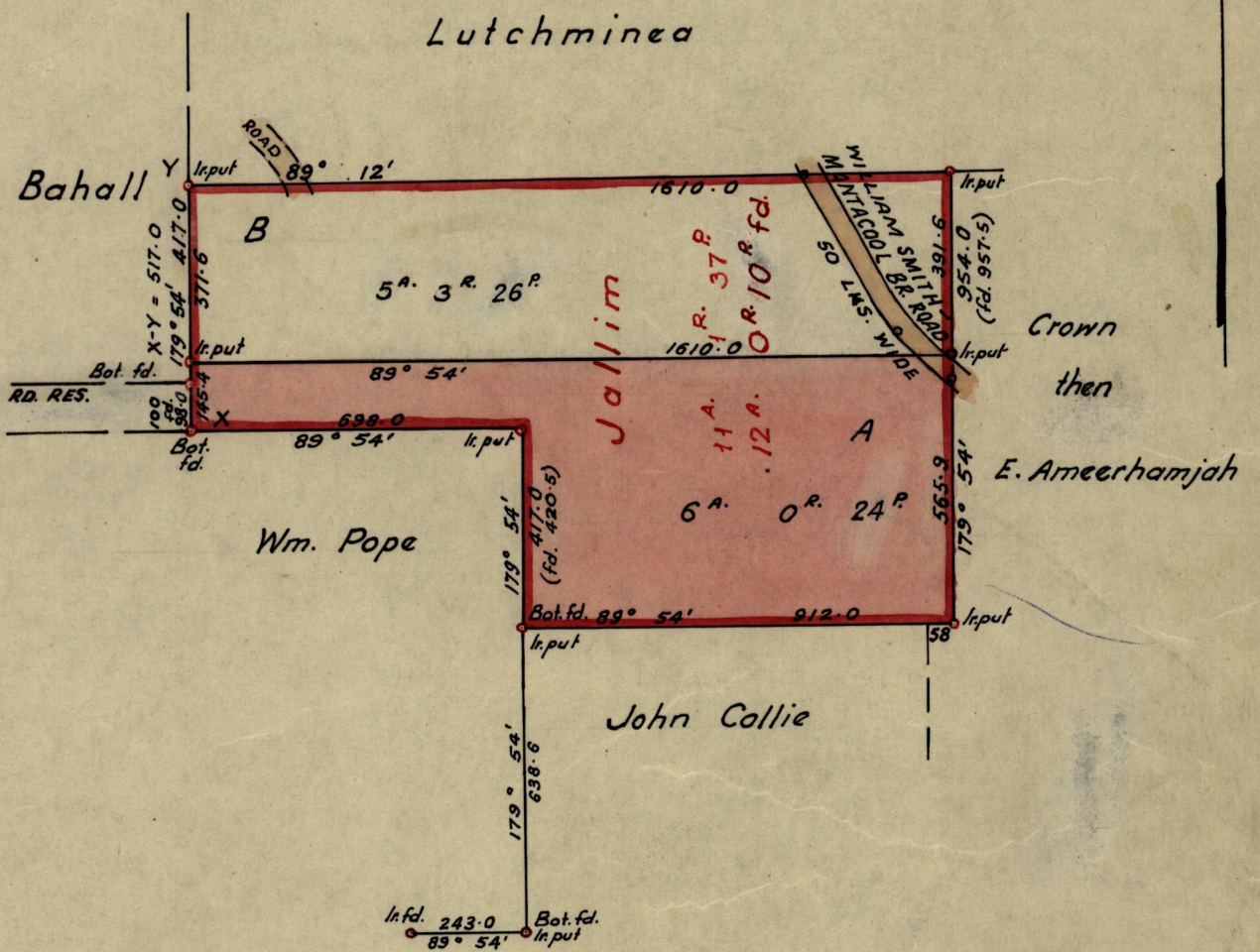
Orig - Bk. 323. 154

26

R.P.O. Vol. 43
C.T. Vol.

Fol. 289
Fol.

Ward of Ortoire
County of Victoria
Cadastral Sheet H. 1. M.



Approved

Fred E. Farrell

As Dep. Director of Surveys
12. 1. 63

Note: To obtain compass bearings add/subtract 6

SCALE ~ 4 chains to 1 inch
minutes Distances are in links

PLAN of a Parcel of land coloured pink in the Ward of Ortoire
Containing six acres & twenty-four perches
Surveyed by me, with due authority, in March 1960.

I certify that I have complied with rule 76 under Section 14 (2) (d) of the Land Surveyors' Ordinance 1952, and that this plan is correct.

Checked by *W. J. J. J.*

Winston Keele

Entered

Land Surveyor, Trinidad *May 21st 60* 1960