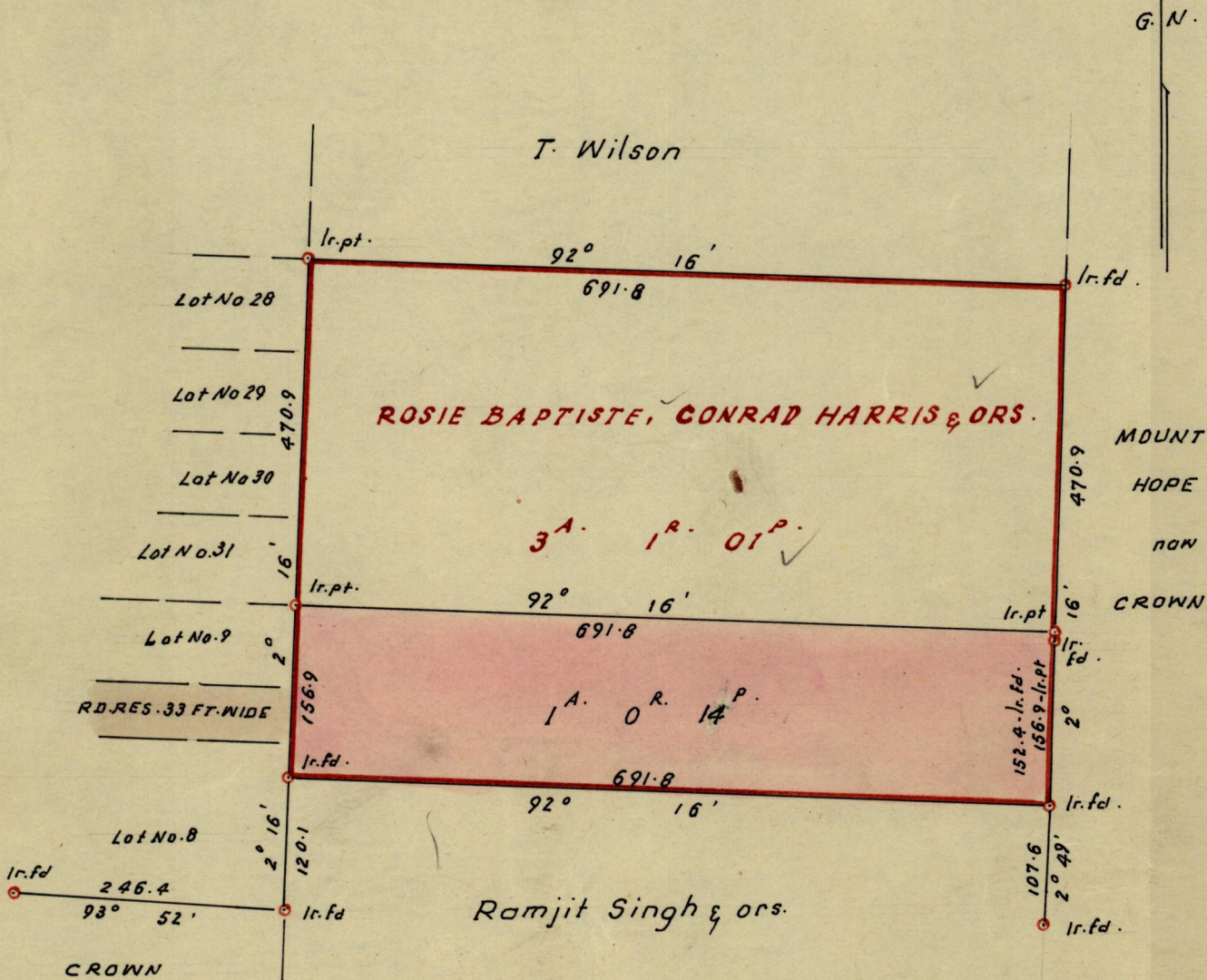


No 34875

R.P.O. Vol.
C.T. Vol. 1725

Fol.
Fol. 177

Ward of St. Anns
County of St. George
Cadastral Sheet B.17.K.



Approved
J. S. Samuel
14.10.76
Director of Surveys

SCALE = 1:1250

Note: To obtain compass bearings ~~add~~/subtract 1 minutes Distances are in links.

PLAN of a Parcel of land coloured pink in the Ward of St. Anns
Containing one acre and fourteen perches.

Surveyed by me, with due authority, in June & December 1975

I certify that I have complied with rule 76 under Section 14 (2) (d) of the Land Surveyors' Ordinance 1952, and that this plan is correct.

Checked by *P. D. 13/10/76*

W. L. B. B. B. B.
Land Surveyor, Trinidad 29th September, 1976

