

No 22372

Orig ~ Bk 322: 52.

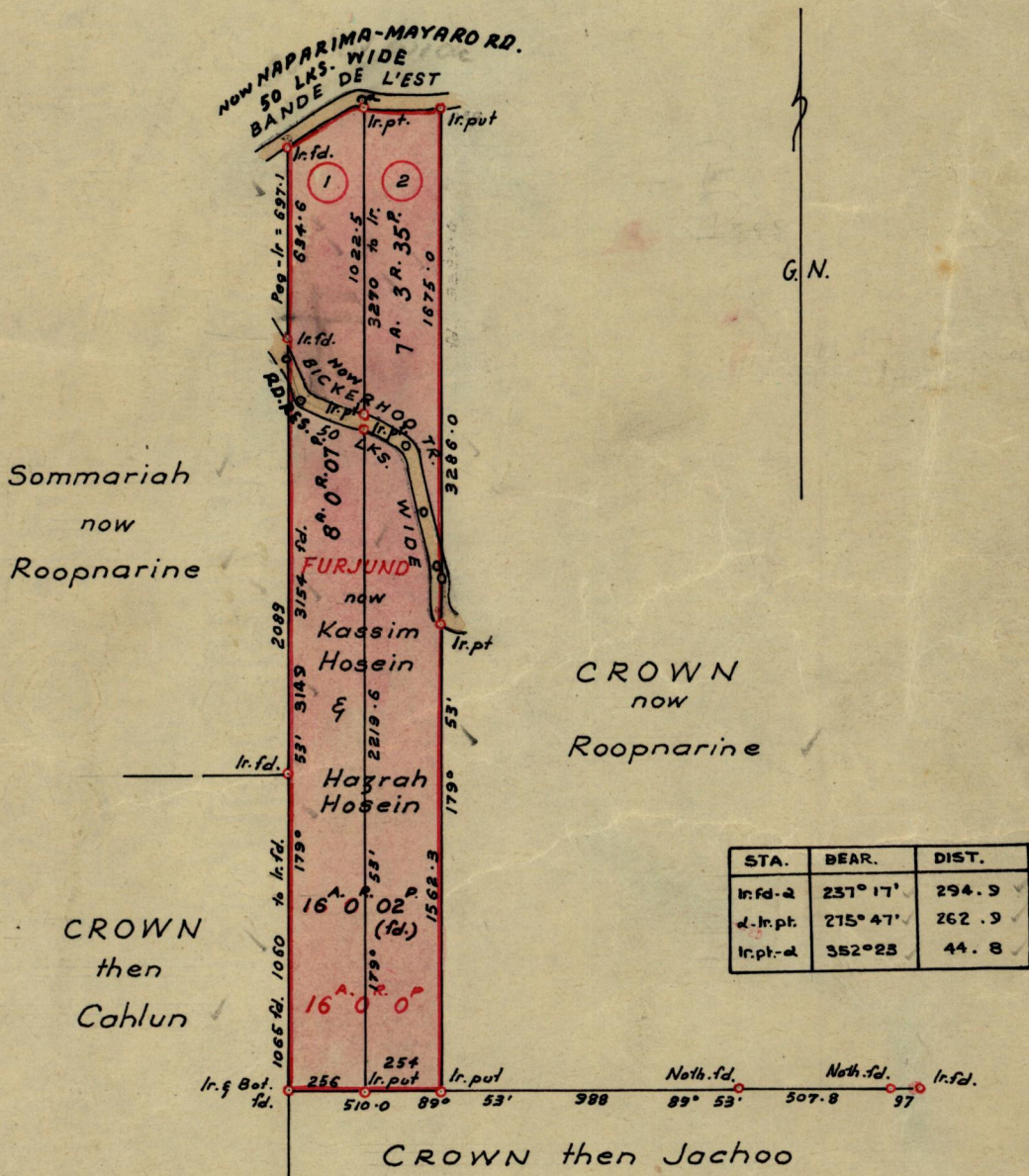
957

25

R.P.O. Vol. 15  
C.T. Vol. 24

Fol. 487  
Fol. 567

Ward of Ortoire  
County of Victoria  
Cadastral Sheet H.1.J.



Approved

*G. H. Farrell*

Director of Surveys  
13.4.68

SCALE ~ 1:5000

Note: To obtain compass bearings add/subtract 7 minutes Distances are in links

PLAN of 2 Parcels of land coloured pink in the Ward of Ortoire  
Containing a Sixteen acres and two perches  
Surveyed by me, with due authority, in January 1964

I certify that I have complied with rule 76 under Section 14 (2) (d) of the Land Surveyors' Ordinance 1952, and that this plan is correct.

Checked by *[Signature]* 11/4/68.

*Lance Pierre*

Entered .....

Land Surveyor, Trinidad 24th March 1964.