

957

L. & S.—54

242

50351/29

Nº 38433

1871/57  
20/5/76

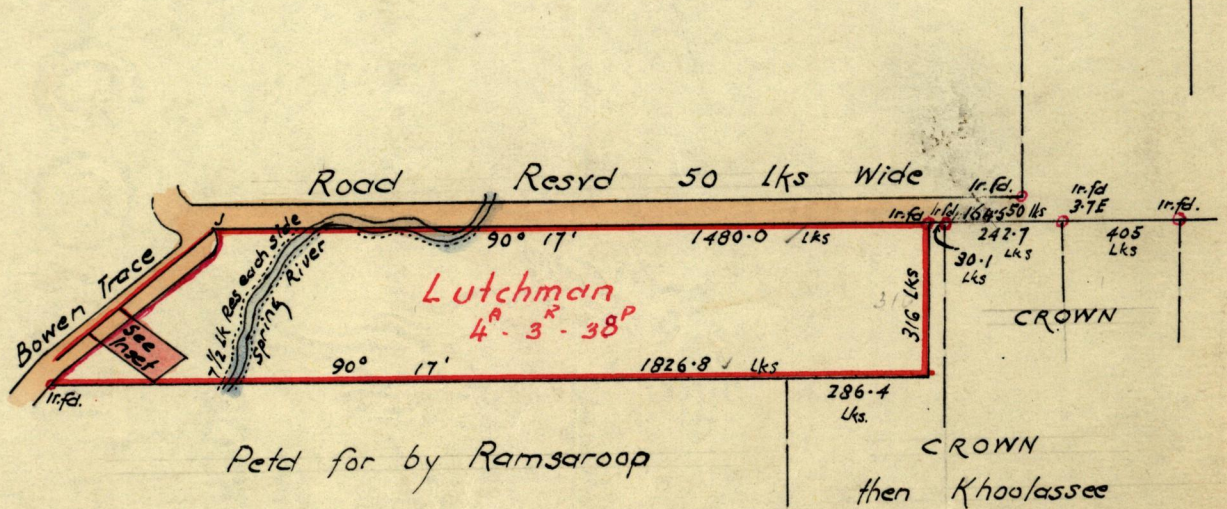
R.P.O. Vol. 572  
C.T. Vol.

Fol. 331  
Fol.

Ward of Cedros  
County of St. Patrick  
Cadastral Sheet F. 18. N

GN

1645



Petd for by Ramsaroop

CROWN then Khoolassee

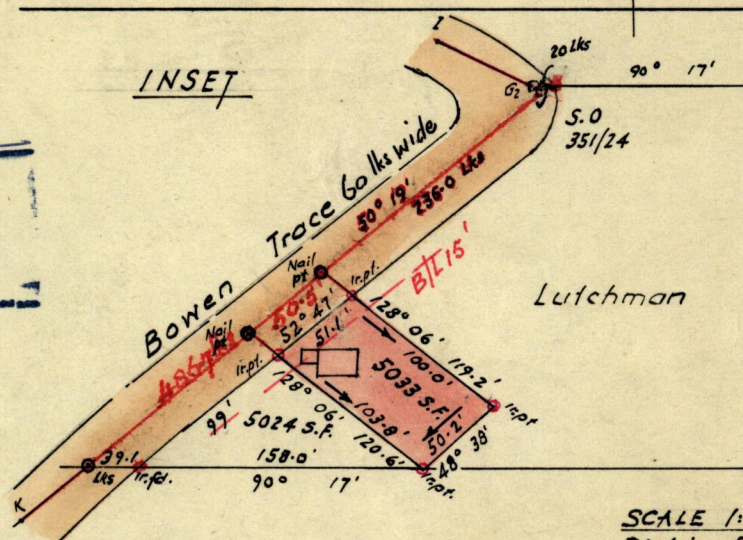
Approved By

*Halifax*

CHIEF EXECUTIVE OFFICER,  
St. Patrick County Council,  
Sec. Local Health Authority,

Date 29.4.76.

INSET



Lutchman

SCALE 1:1250  
Dist in Ft & Lks.

Approved

*John Samuel*  
Director of Surveys

28.6.76.

SCALE 4 Chains

Note: To obtain compass bearings add/subtract 19 minutes Distances are in Lks

PLAN of a Parcel of land coloured pink in the Ward of Cedros

Containing Five thousand and thirty three sq. ft.

Surveyed by me, with due authority, in Nov. 1975

I certify that I have complied with rule 76 under Section 14 (2) (d) of the Land Surveyors' Ordinance 1952, and that this plan is correct.

Checked by *J.H. 24/6/76*

Entered.....

*J.H. 1<sup>st</sup> May 1976*  
Land Surveyor, Trinidad.....



Original in Bk 564 to 60 L. STOUTE 2-print.