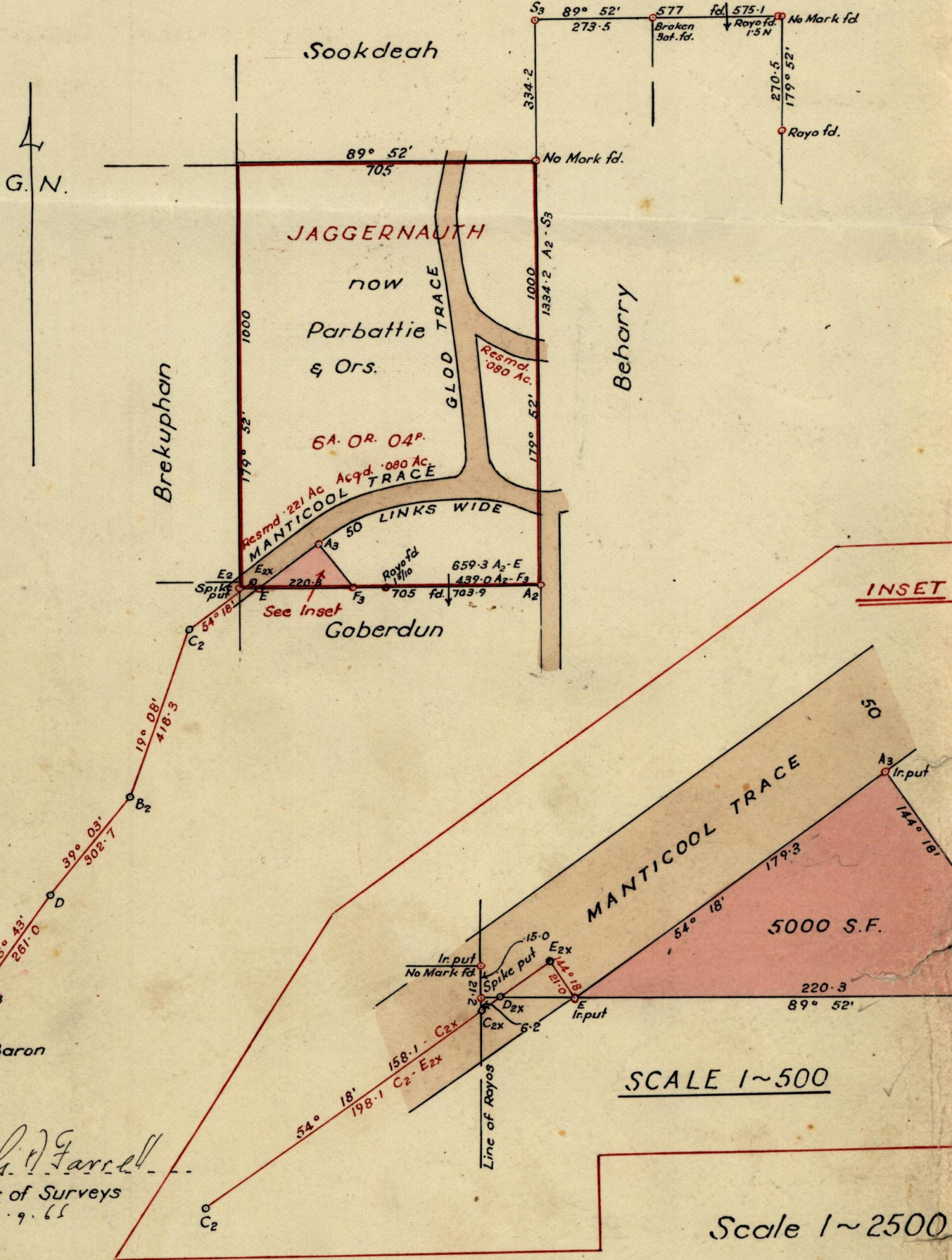


Orig ~ Bk. 361:10
357



SCALE 1~500

Scale 1~2500
Distances are in links

Note: To obtain compass bearings add 8 minutes

PLAN of a Parcel of land coloured pink in the Ward of Ortoire
Containing Five thousand sq. feet
Surveyed by me, with due authority in September 1963

I certify that I have complied with rule 76 under Section 14(2)(d) of the Land Surveyors' Ordinance 1952 and that this plan is correct.

13/9/66

[Signature]

Land Surveyor, Trinidad. 1st Nov. 1963

Approved
[Signature]
As Director of Surveys
13.9.65

196

Bk 957

Original in Bk. 361 fo 10

196