

Nº 19190

957

23

R.P.O. Vol.

Fol.

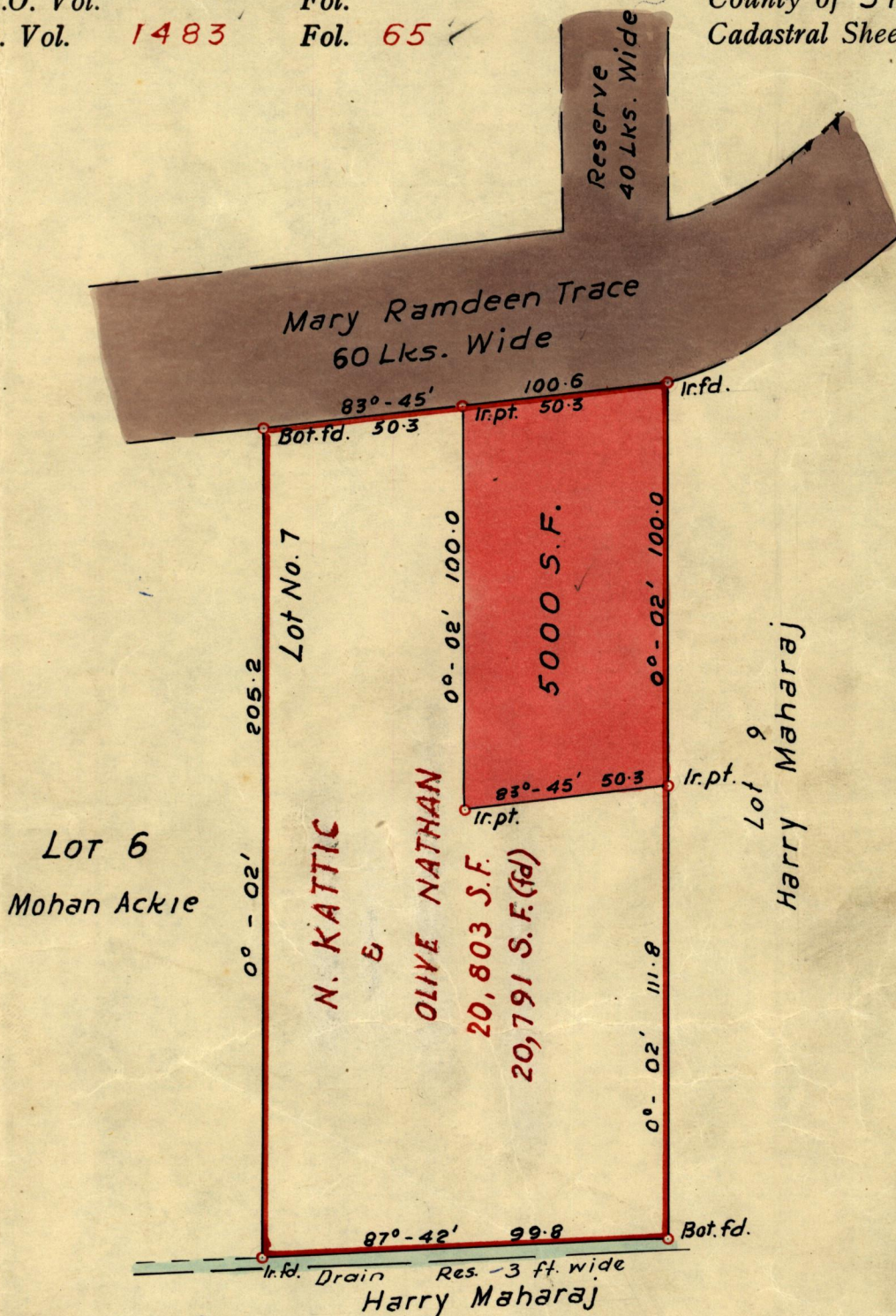
C.T. Vol. 1483

Fol. 65

Ward of Siparia

County of ST. PATRICK

Cadastral Sheet G.13, M.N



GRID NORTH

LOT 6
Mohan Ackie

Lot No. 7

N. KATTIC

&

OLIVE NATHAN

20,803 S.F.

20,791 S.F. (fd)

Lot 9
Harry Maharaj

Approved

R.A. Farrell

Director of Surveys
22-7-69

SCALE 1:500

Note: To obtain compass bearings ~~add~~/subtract 2 minutes Distances are in Feet.

PLAN of a Parcel of land coloured pink in the Ward of Siparia
Containing Five thousand superficial feet.

Surveyed by me, with due authority, in July, 1967 for Nathan Kattic
I certify that I have complied with rule 76 under Section 14 (2) (d) of the Land
Surveyors' Ordinance 1952, and that this plan is correct.

Checked by *[Signature]* 22/7/69

[Signature]

Entered

Land Surveyor, Trinidad 25th August 1967

Original on Bk 93C, fo 152

18-30-11

18 1911

Ward of
County of
California

Vol.
Vol.

R.P.O. Vol.
C.P. Vol.

COMPTON

To obtain copies of the
County of
in the Ward of
Sworn by me this day
I certify that I have
Sergeant, California 1911, and that his plan is correct.
Signed by
Notary Public
1911-1912-1913