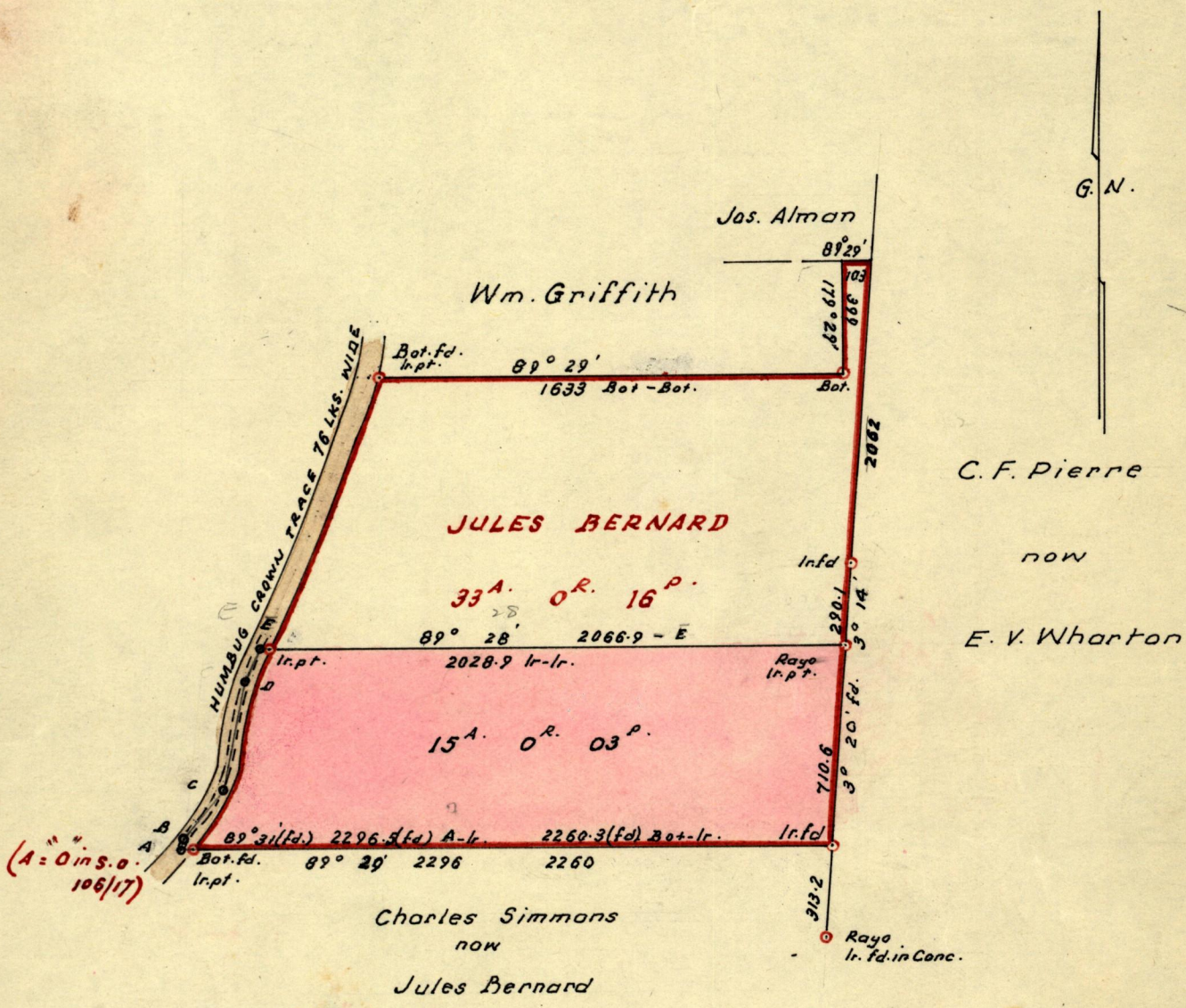


No 34907

R.P.O. Vol. 424  
C.T. Vol.

Fol. 451  
Fol.

Ward of Toco  
County of St. David  
Cadastral Sheet C. 5. I.



sta.	bear.	dist.
A - B	5° 47'	41.6
B - C	38° 29'	223.0
C - D	11° 44'	380.9
D - E	22° 29'	132.0
E - Bot.	23° 23'	1040.0

Approved

*Delany Samuel*  
Director of Surveys  
25.2.76.

SCALE 6 chns : 1 in

Note: To obtain compass bearings add ~~subtracted~~ 31

minutes

Distances are in links

PLAN of a Parcel of land coloured pink in the Ward of Toco  
Containing fifteen acres and three perches.

Surveyed by me, with due authority, in December 1975

I certify that I have complied with rule 76 under Section 14 (2) (d) of the Land Surveyors' Ordinance 1952, and that this plan is correct.

Checked by *L.H.D. 24/2/76*

*Michael Hancock*  
Land Surveyor, Trinidad 6<sup>th</sup> Feb 1976

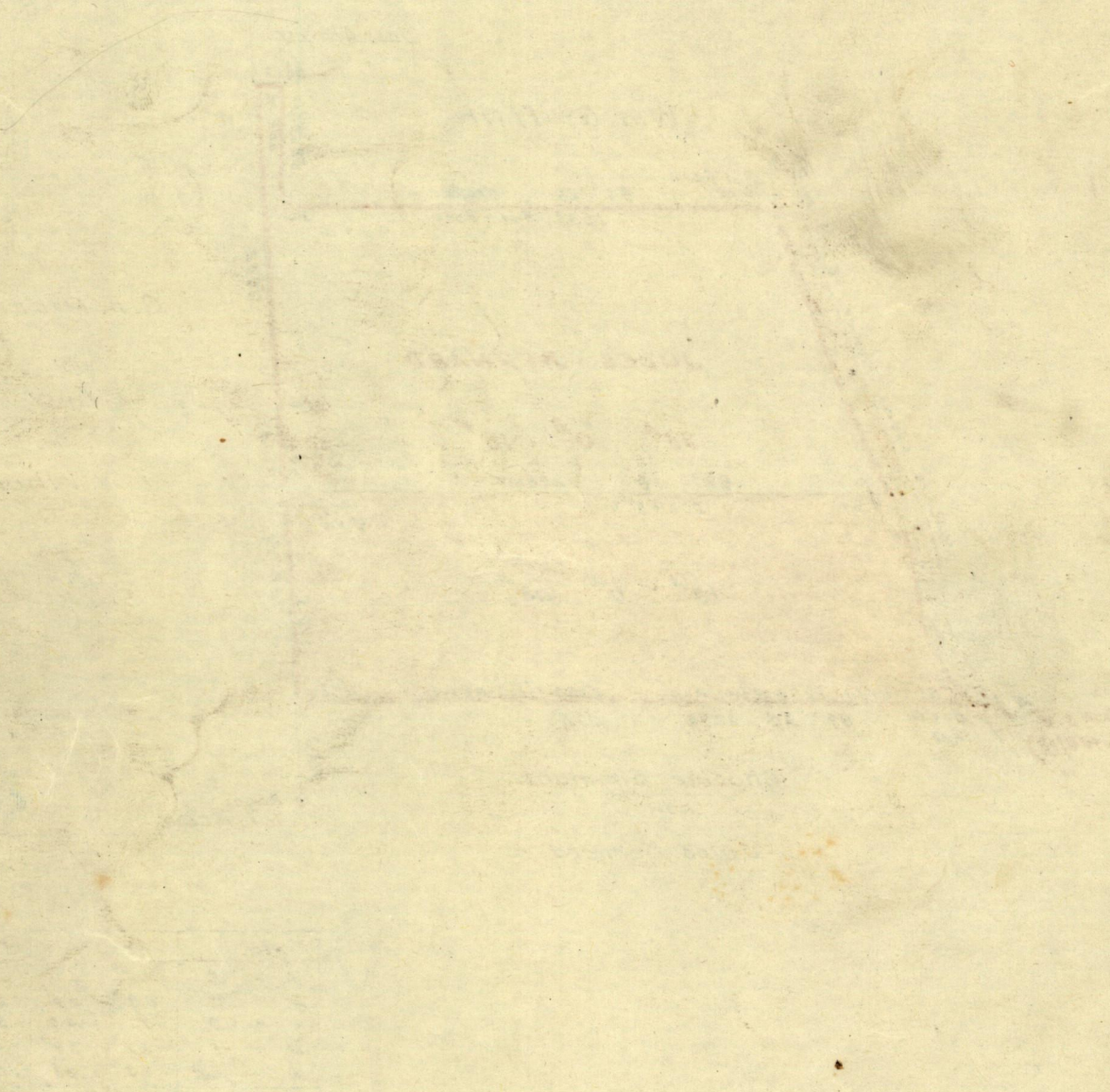
Entered .....

LANDS AND SURVEYS VAULT RECORDS

Original in Bk 1A8 fo 43

179-2480

Head of  
County of  
California  
1847



PLAT of a Parcel of land colored yellow in the Ward of  
 containing  
 Situated in the  
 County of  
 State of California  
 District of  
 Filed for  
 1847