

Murray Partners 957

215

L. & S.—54

For approval only
13/2/76

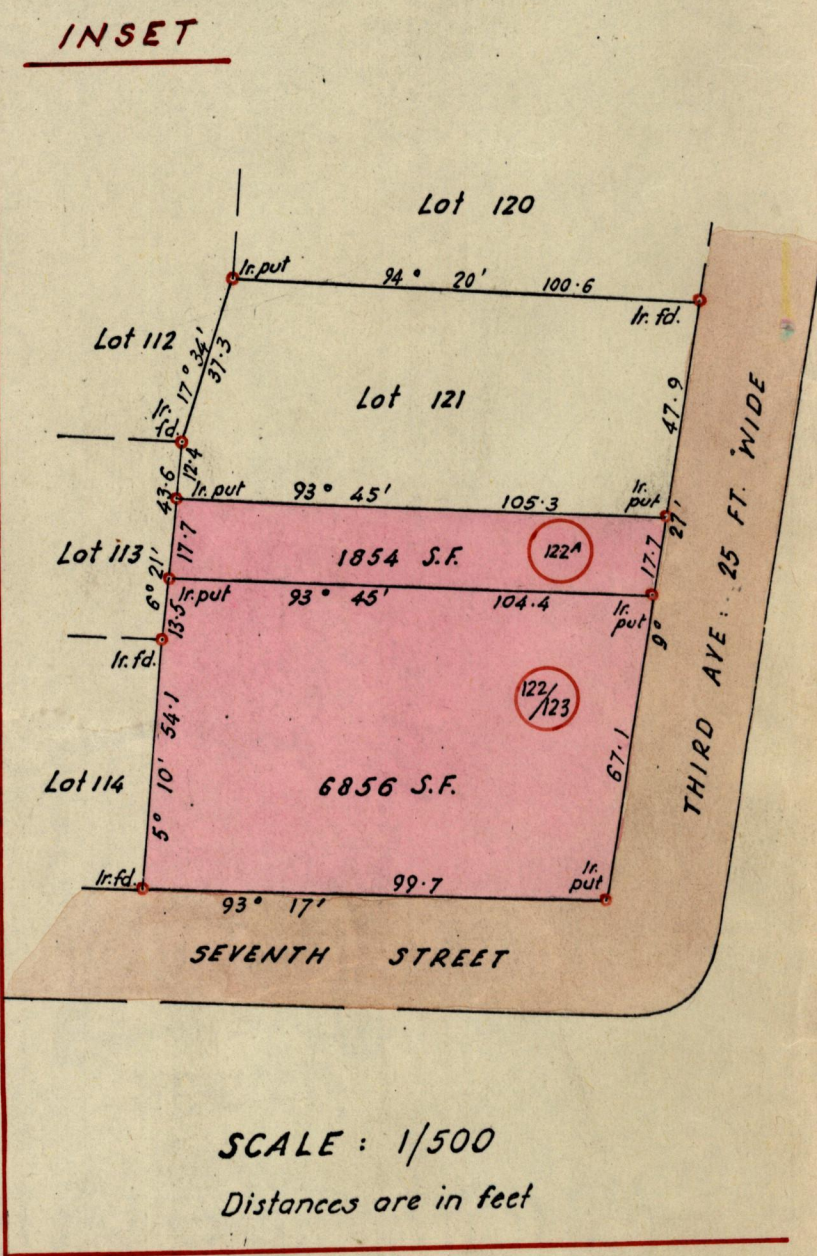
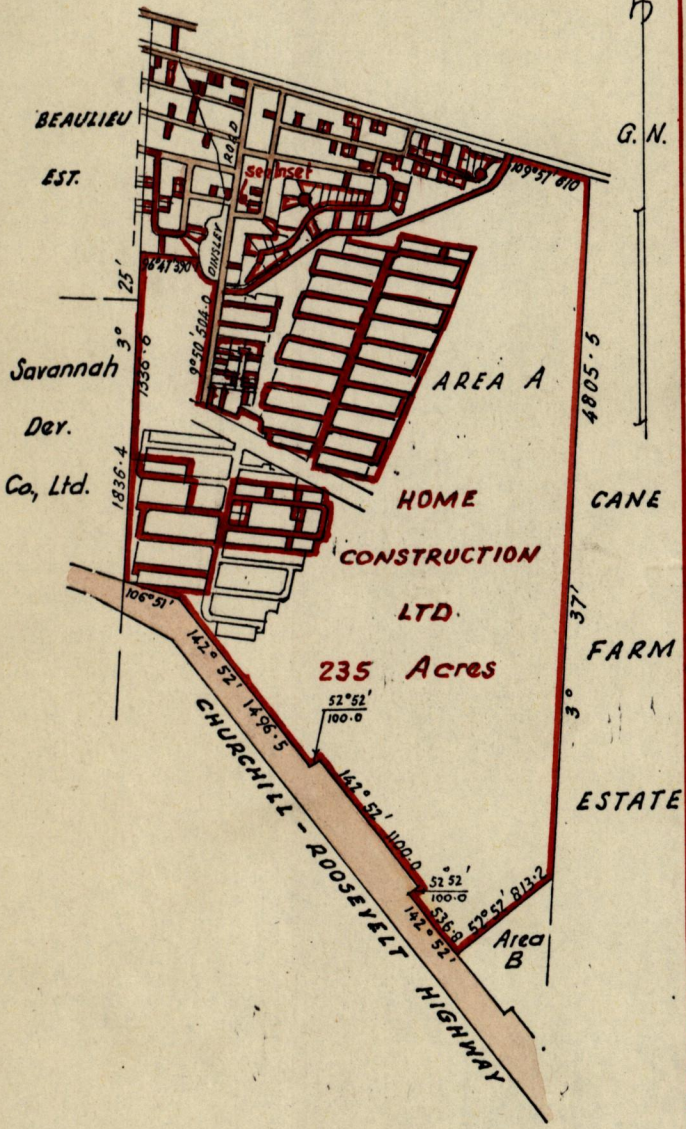
No 35420

R.P.O. Vol. 10
C.T. Vol. 2207

Fol. 411
Fol. 55

Ward of Tacarigua
County of St. George
Cadastral Sheet B.18.0.

Dinsley Village



SCALE : 1/500
Distances are in feet

Approved
Richard Samuel
Director of Surveys

19.2.76.

SCALE : 20 chains to 1 inch.

Note: Bearings are based on Control Marks. Distances are in feet
~~To obtain compass bearings add and subtract~~ minutes

PLAN of $\frac{2}{3}$ Parcel of land coloured pink in the Ward of Tacarigua
Containing six thousand, eight hundred & fifty-six square feet, and
one thousand, eight hundred & fifty-four square feet,
Surveyed by me, with due authority, in January 1976.

I certify that I have complied with rule 76 under Section 14 (2) (d) of the Land
Surveyors' Ordinance 1952, and that this plan is correct.

Checked by *L. W. 10/2/76*

Richard Samuel

Entered.....

Land Surveyor, Trinidad 12th Feb 1976

Original in Plan P. G. 98

