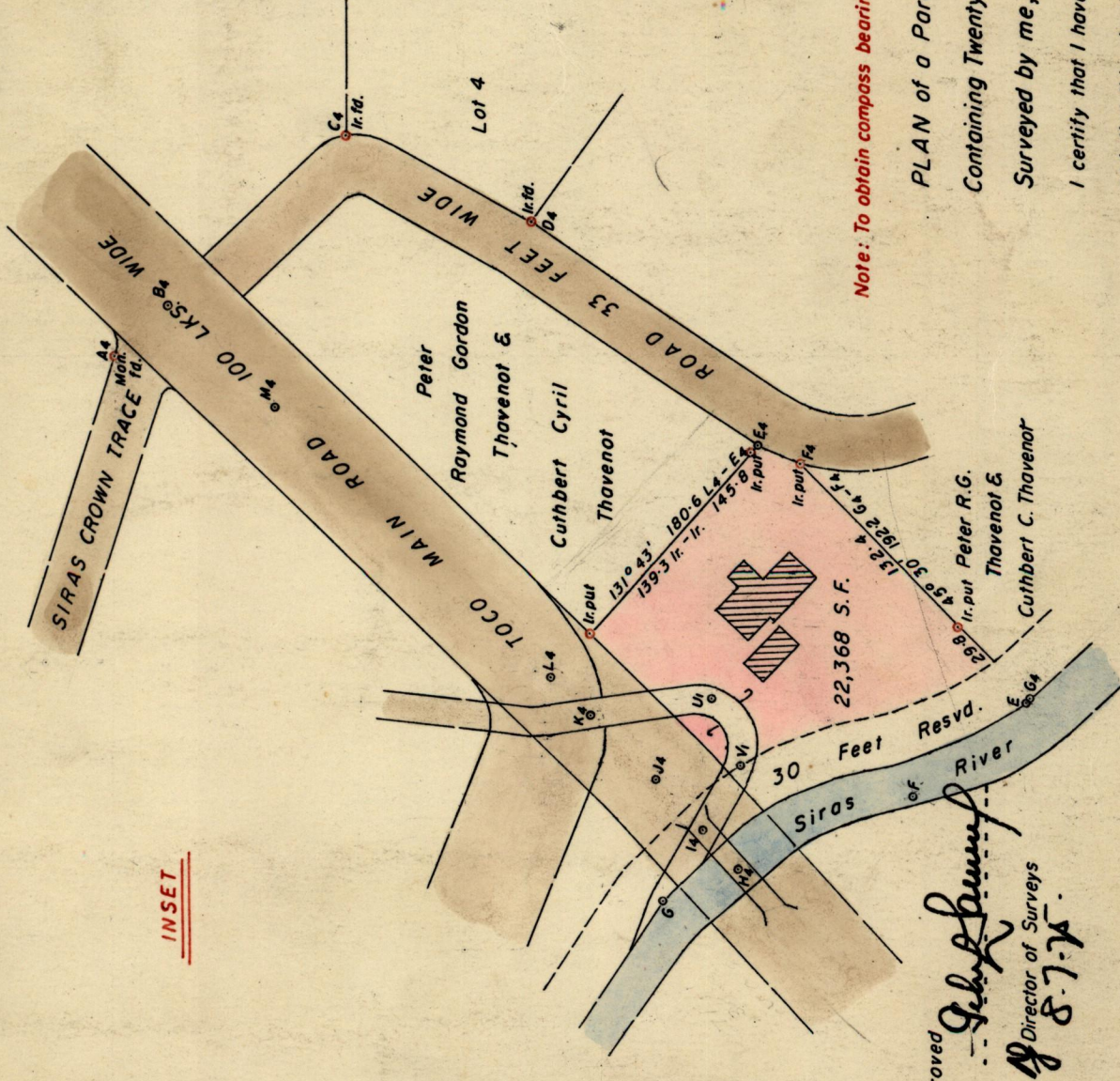


R. P. O. Vol. 312 Fol. 31  
 C. T. Vol. 1945 Fol. 251

INSET



Sta.	Bearing	Dist.
A4-B4	136° 11'	41.8
A4-D2	136° 11'	184.1
A4-C4	204° 53'	119.5
C4-D4	224° 33'	185.4
D4-E4	204° 57'	26.1
E4-F4	313° 08'	3.6
E-F	320° 00'	84.8
F-H4	337° 23'	110.1
F-G	337° 23'	157.1
G-I4	119° 40'	46.6
G-V1	119° 40'	92.1
V1-U1	66° 00'	41.9
U1-K4	351° 40'	71.9
H4-I4	47° 47'	30.3
H4-J4	47° 47'	71.1
J4-K4	44° 13'	53.3
J4-L4	44° 13'	86.1
J4-M4	44° 13'	310.5
M4-B4	44° 06'	86.5

Note: To obtain compass bearings add 27 minutes

PLAN of a Parcel of land coloured pink in the Ward of Matura  
 Containing Twenty two thousand three hundred and sixty eight square feet  
 Surveyed by me, with due authority in December 1974

I certify that I have complied with Rule 76 under Section 14 (2) (d) of the Land Surveyors' Ordinance 1952  
 and that this plan is, correct.

Approved  
*John Bennett*  
 Director of Surveys  
 8.7.75

SCALE 1-1250  
 Distances are in feet

Checked by *S.D. 8/4/75*  
 Entered on -----

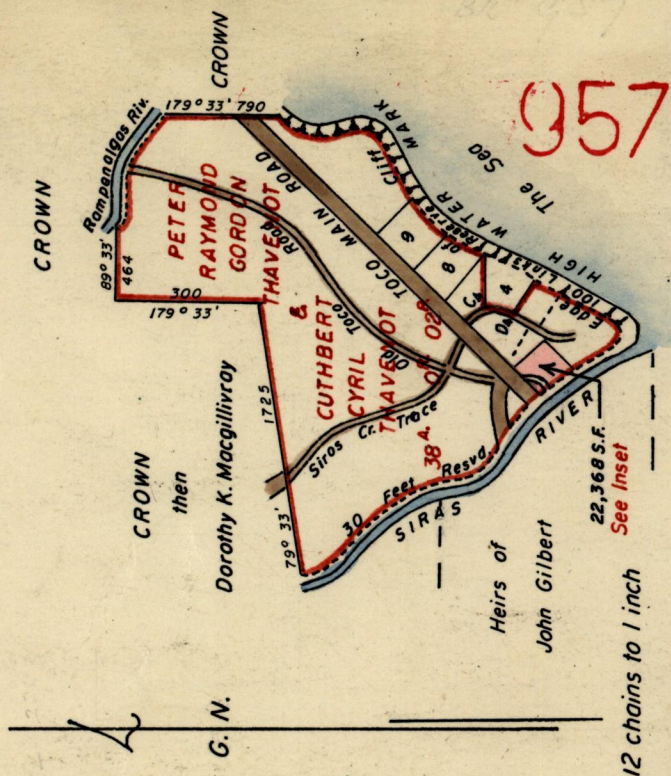
LANDS AND SURVEYS VAULT RECORDS

*John Bennett*

Land Surveyor, Trinidad - 17<sup>th</sup> June 1975

Ward of Matura  
 County of St. Andrew  
 Cadastral Sheet C.14.F.

*Solberg & Co*  
*1/7/75*



SCALE 12 chains to 1 inch

Distances are in links

Lot 8 43,617 S.F.  
 Lot 9 43,520 S.F. C.T. Vol. 1945 Fol. 261

957

124



original survey in bk 999 fol. 92