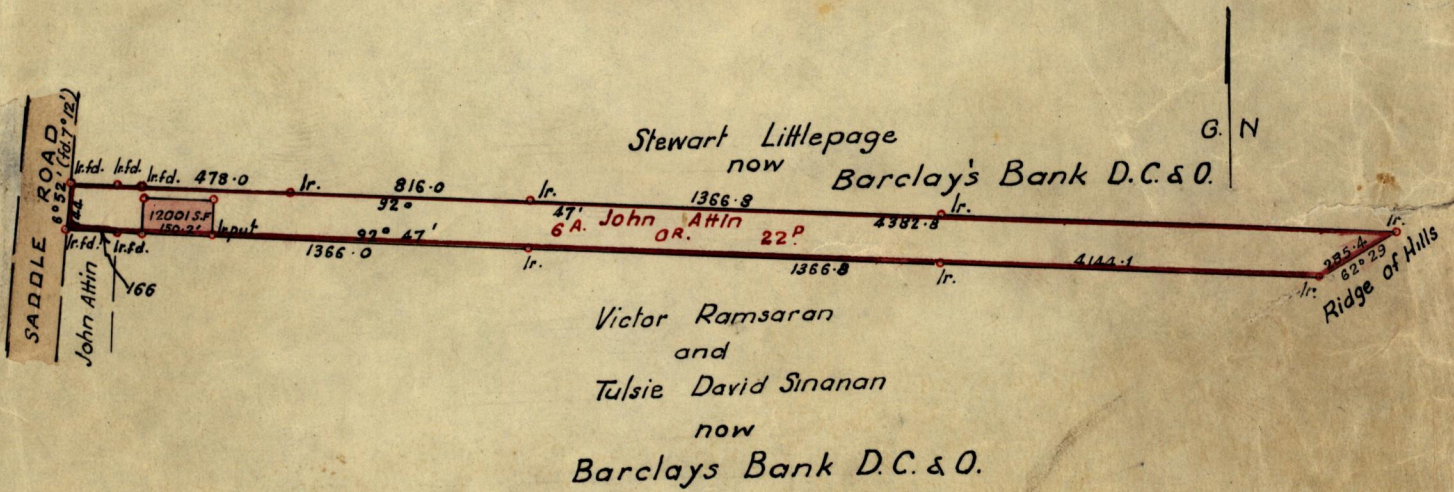
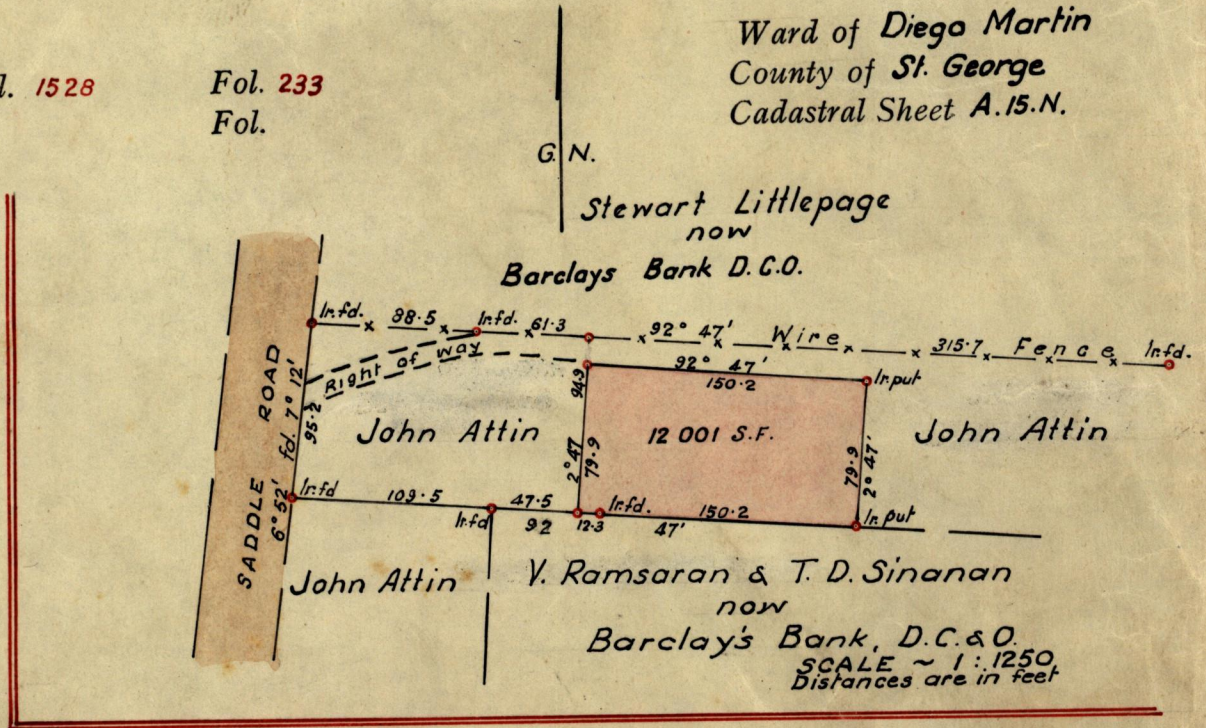


Nº 1117

R.P.O. Vol. 1528  
C.T. Vol.

Fol. 233  
Fol.

Ward of Diego Martin  
County of St. George  
Cadastral Sheet A.15.N.



Approved

*W. J. D. J.*  
ag. Dir. Director of Surveys  
30. 1. 60.

SCALE 1 ~ 5000  
minutes Distances are in links

Note: To obtain compass bearings add/subtract 2  
PLAN of a Parcel of land coloured pink in the Ward of Diego Martin  
Containing twelve thousand and one square feet  
Surveyed by me, with due authority, in January 1960 for Barclays Bank D.C.O.  
I certify that I have complied with rule 76 under Section 14 (2) (d) of the Land  
Surveyors' Ordinance 1952, and that this plan is correct.

Checked by *P. D. F.*  
28. 1. 60  
Entered .....

*Phil. Douglas*  
Land Surveyor, Trinidad Jan. 25<sup>th</sup> 1960



Ward of  
County of  
City of

1117

1117

1117

1117

1117

1117

1117

1117

1117

1117

1117

1117

1117

1117

1117

1117

1117

1117

1117

1117

1117

1117

1117

1117

1117

SOLE

To obtain certain bearings and distances  
PLAN of a Parcel of land situated  
Containing  
Surveyed by me with due authority in  
I certify that I have complied with the 7th and 8th sections 14 (2) (b) of the Land  
Surveyors Ordinance 1922, and that this plan is correct.

Created by  
District

1117

1117