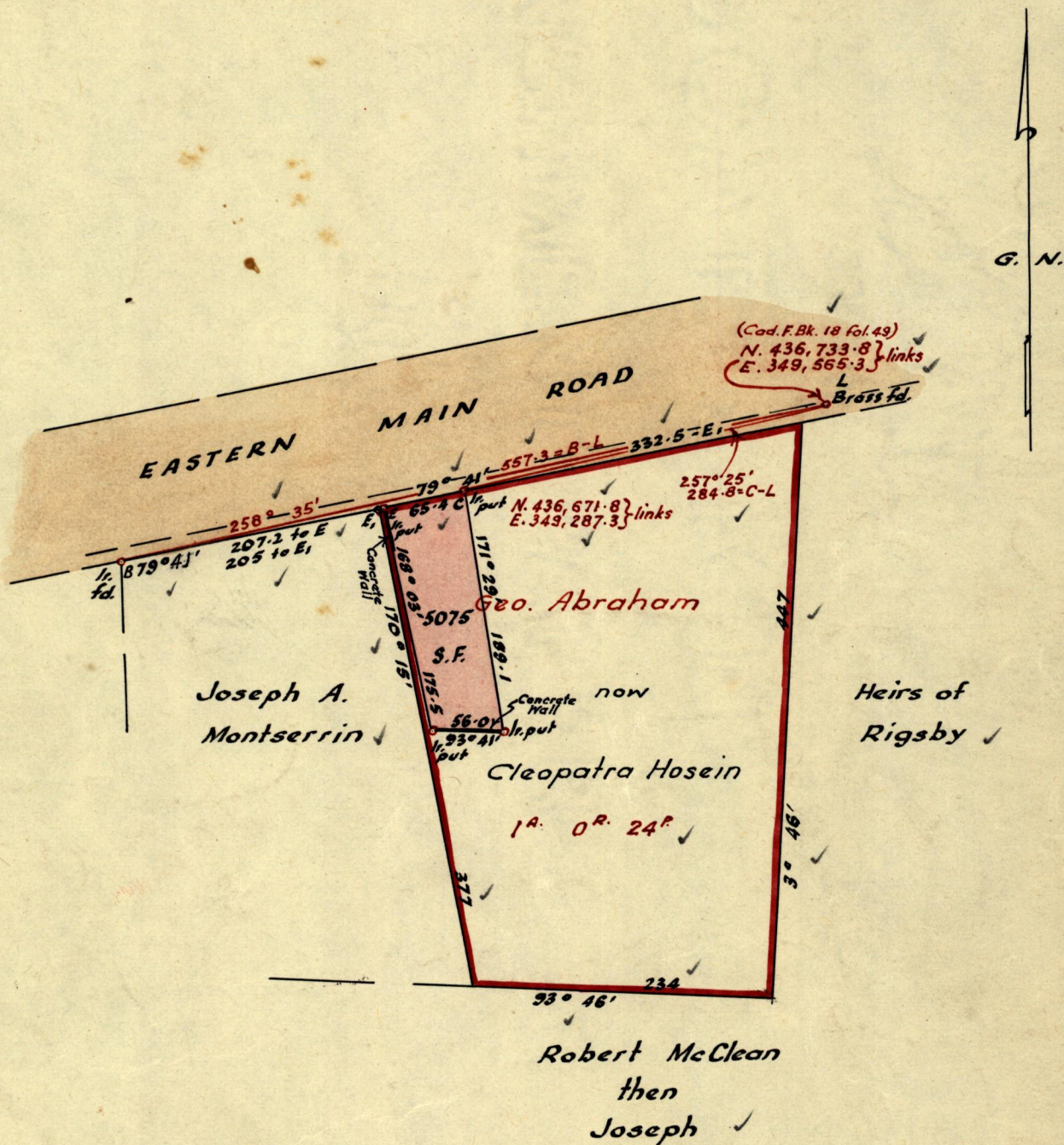


No 8748

R.P.O. Vol. 382 ✓
C.T. Vol.

Fol. 523 ✓
Fol.

Ward of *St. Anns* ✓
County of *St. George* ✓
Cadastral Sheet *A.20.P* ✓



Vault ✓
Rigsby ✓
Acen ✓

Approved

Lud. E. Samell

by Director of Surveys

Bearings are based on the P.O.S. Survey

SCALE ~ 1/1000

Note: To obtain compass bearings subtract

minutes

Distances are in links

PLAN of a Parcel of land coloured **pink** in the Ward of **St. Anns** ✓
Containing **five thousand & seventy-five sq. feet** ✓
Surveyed by me, with due authority, in **August 1963**.

I certify that I have complied with rule 76 under Section 14 (2) (d) of the Land Surveyors' Ordinance 1952, and that this plan is correct.

Checked by *E. 5/9/63*

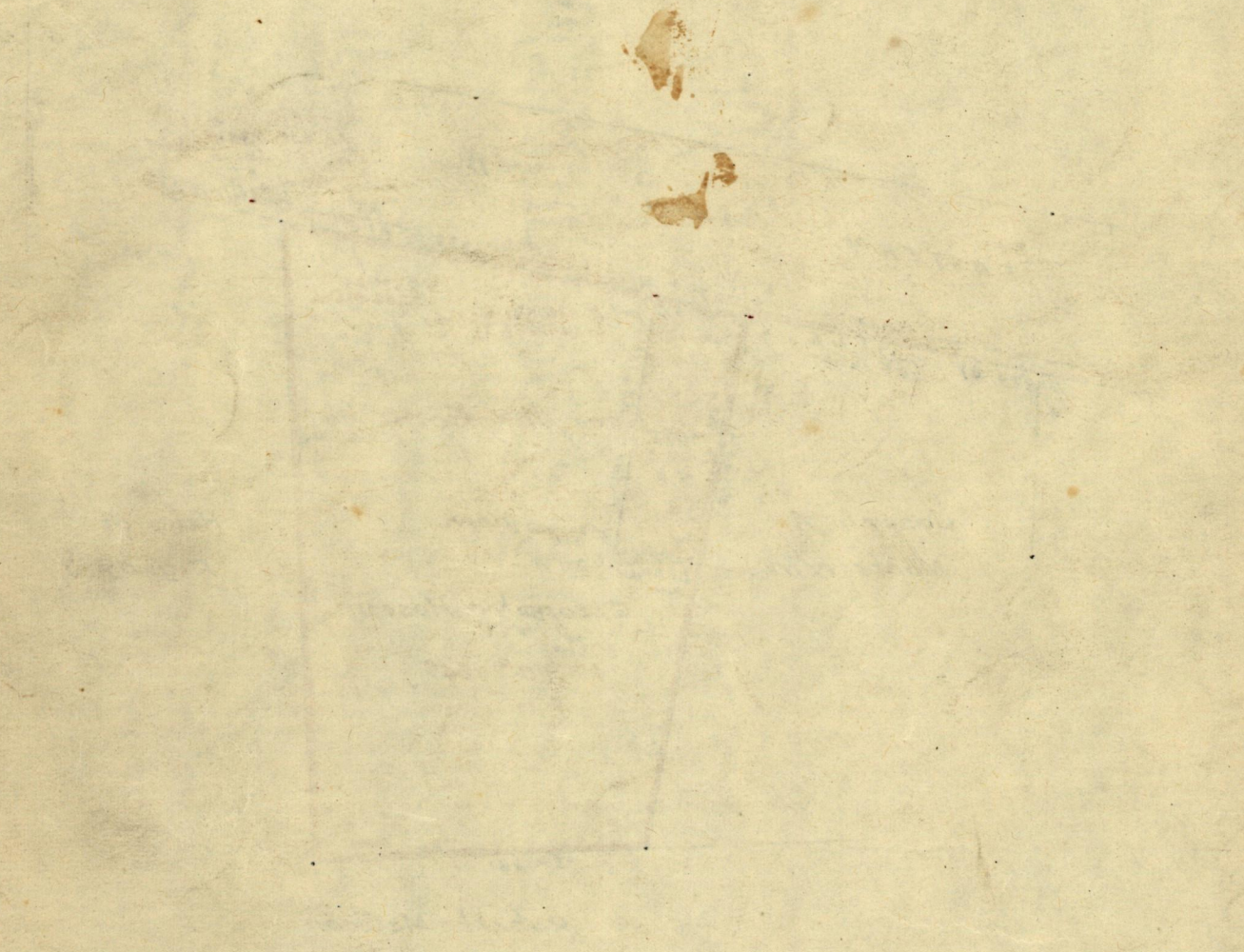
Albert Haynes

Entered Land Surveyor, Trinidad *3rd September 1963*

LANDS AND SURVEYS VAULT RECORDS

Handwritten notes at the top left, including the number '11' and some illegible text.

101-101



Note: To obtain correct results, all...

Handwritten notes at the bottom left, including the number '10' and some illegible text.

Handwritten notes at the bottom of the page, including the number '10' and some illegible text.