

No 15699

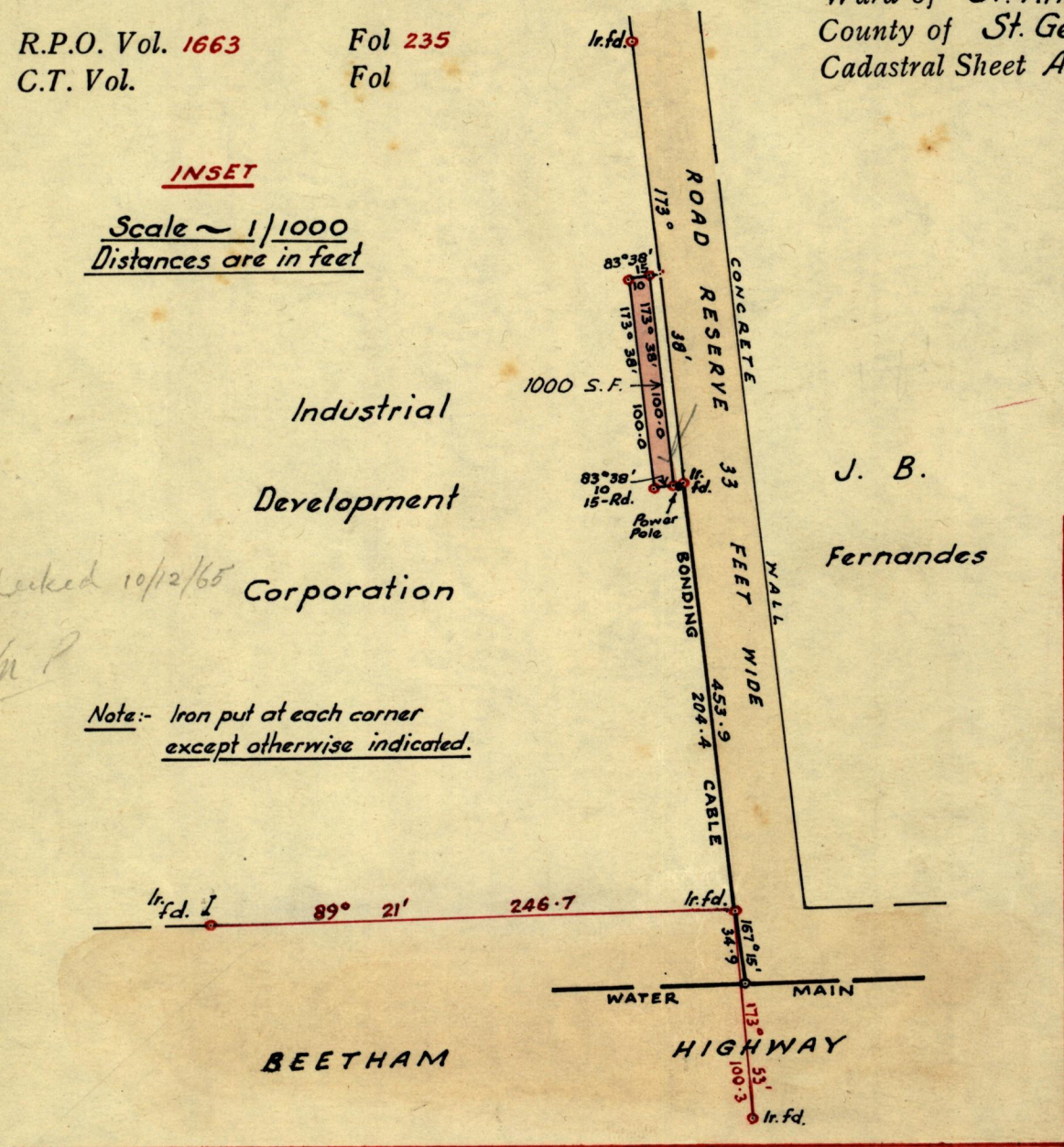
R.P.O. Vol. 1663
C.T. Vol.

Fol 235
Fol

Ward of St. Anns
County of St. George
Cadastral Sheet A-20.0 B17M

INSET

Scale ~ 1/1000
Distances are in feet

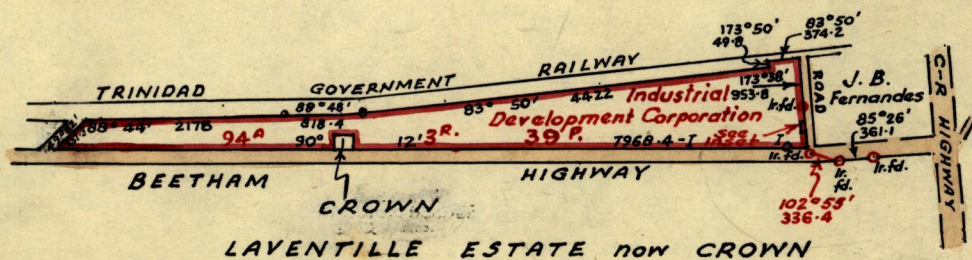


Note:- Iron put at each corner
except otherwise indicated.

Area checked 10/12/65

Am P

Area ✓
Van 14 ✓
Reg ✓



Approved

Fred. J. Farrell

Director of Surveys
16. 12. 65

Note: To obtain true bearings add/subtract 2
Bearings are based on Solar observations

PLAN of a Parcel of land coloured pink
Containing one thousand square feet
Surveyed by me, with due authority, in March 1965.

I certify that I have complied with rule 76 under Section 14 (2) (d) of the Land Surveyors' Ordinance 1952, and that this plan is correct.

Checked by..... 16/11/65

Entered

Phil. Douglas
Land Surveyor, Trinidad Dec. 6th 19.65

SCALE ~ 1/25000
minutes Distances are in feet

in the Ward of St. Anns



70-13000

Faint, illegible text in the upper left corner.

Faint, illegible text in the upper right corner.

Several lines of very faint, illegible text in the upper middle section.

Faint, illegible text in the middle right section.

Faint, illegible text in the middle section.

Faint, illegible text in the middle section.

Faint, illegible text in the lower left section.

Several lines of very faint, illegible text in the lower middle section.

Several lines of very faint, illegible text in the lower middle section.

Several lines of very faint, illegible text in the lower middle section.

Several lines of very faint, illegible text in the lower middle section.

Several lines of very faint, illegible text in the lower middle section.

Several lines of very faint, illegible text in the lower middle section.

Several lines of very faint, illegible text in the lower middle section.

Faint rectangular stamp or box at the bottom left corner.