

Nº 26831

957

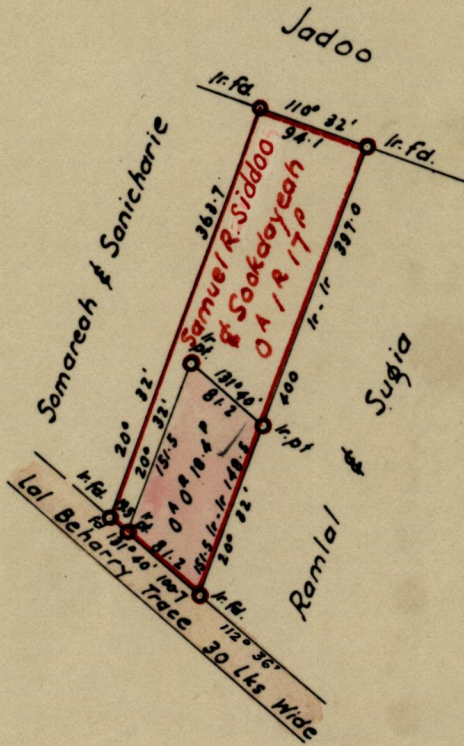
11

R.P.O. Vol.  
C.T. Vol. 1884

Fol.  
Fol. 287

Ward of Naparima  
County of Victoria  
Cadastral Sheet G.13. B

G N



Approved

*L. A. Fanell*

Director of Surveys  
10.12.69

SCALE 1:1250

Note: To obtain compass bearings ~~add~~/subtract 2 minutes Distances are in Lks

PLAN of a Parcel of land coloured pink in the Ward of Naparima  
Containing Eighteen point four perches  
Surveyed by me, with due authority, in June 1969

I certify that I have complied with rule 76 under Section 14 (2) (d) of the Land Surveyors' Ordinance 1952, and that this plan is correct.

Checked by *L.S.W. 9/12/69*

Land Surveyor, Trinidad

*W. Lalicharan*  
20th June 1969