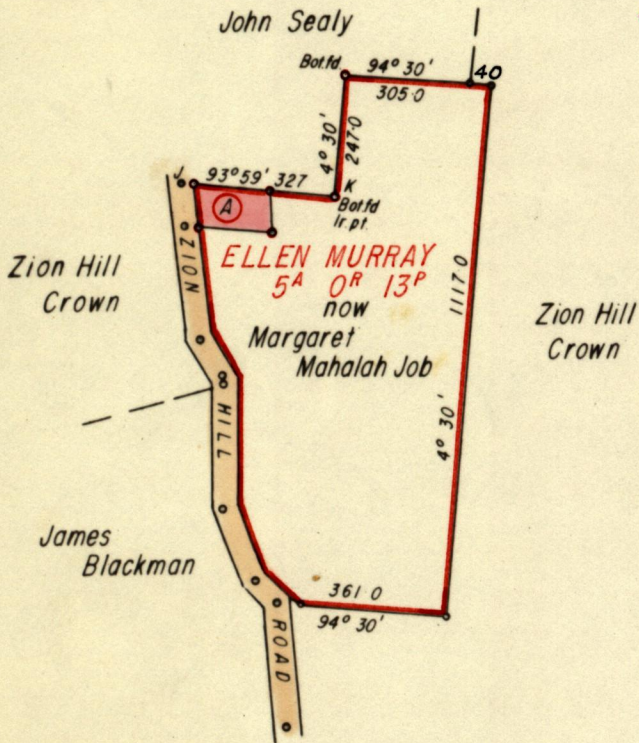


Nº 18209

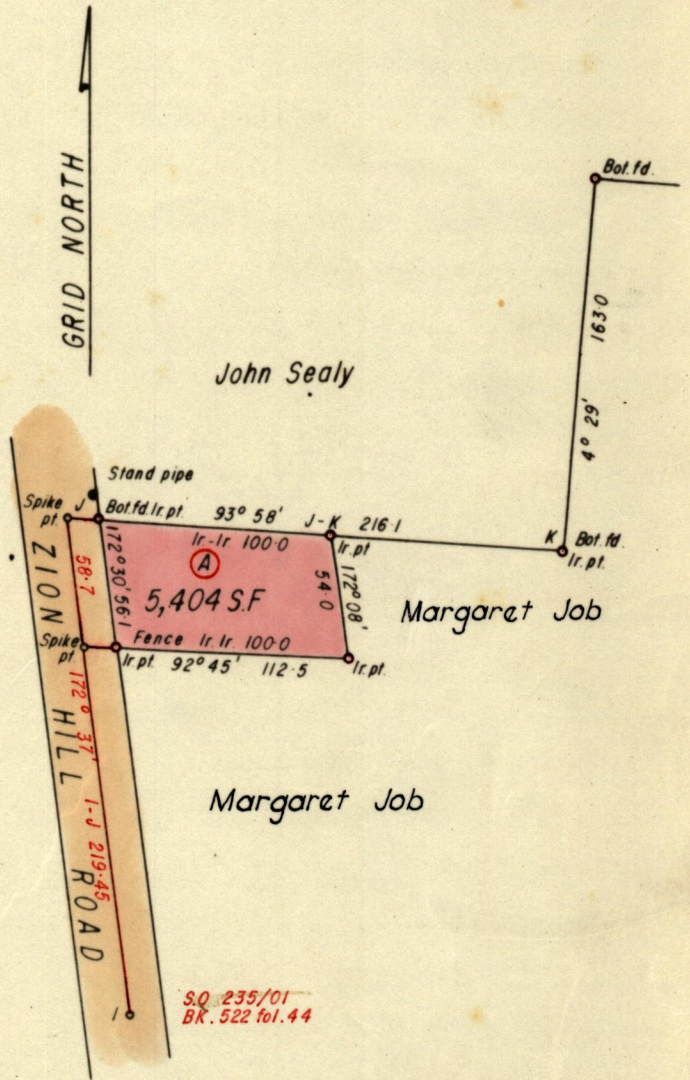
R.P.O. Vol. 87
C.T. Vol.

Fol. 535
Fol.

Ward of Tobago
Parish of St. Mary
Cadastral Sheet 1. 14 K



SCALE 4 Chains to an Inch
Distances are in links



Approved

D. J. Farrell

Director of Surveys
11-10-69

SCALE 1:1000 ✓

Note: To obtain ~~correct~~ ^{true} bearings add ~~subtract~~ 1 minute ✓ Distances are in feet ✓
Bearings are based on Solar Observations
PLAN of a Parcel of land coloured pink ✓ in the Ward of Tobago ✓

Containing Five thousand four hundred and four square feet ✓

Surveyed by me, with due authority, in September 1969

I certify that I have complied with rule 76 under Section 14 (2) (d) of the Land Surveyors' Ordinance 1952, and that this plan is correct.

Checked by *D. J. Farrell* 11.10.69.

P. Douglas
Land Surveyor, Trinidad Sep't. 30th 19 69

Entered

LANDS AND SURVEYS VAULT RECORDS

Original in Bk 522 fo 44

1. 522 / 44