

950

99

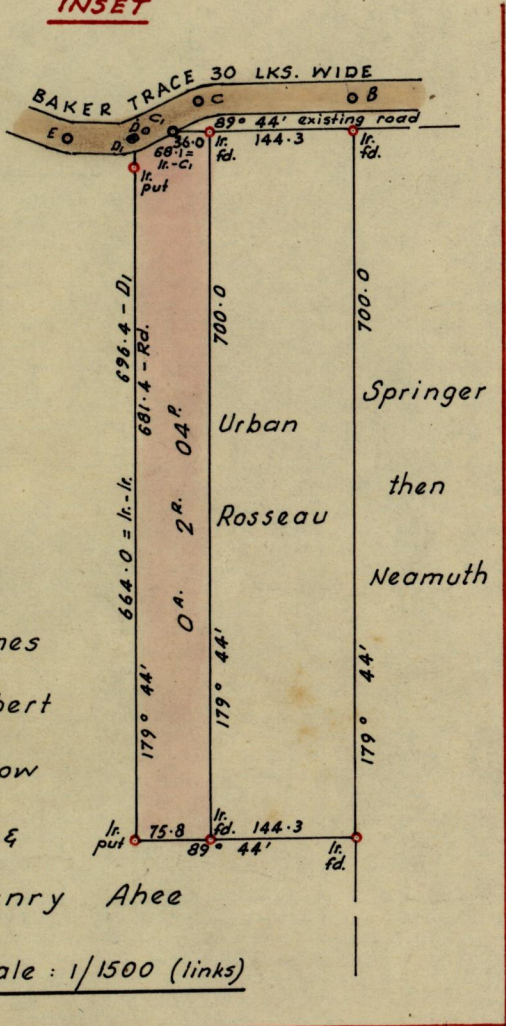
Nº 27043

R.P.O. Vol. 15
C.T. Vol. 936

Fol. 129
Fol. 319

Ward of Turure
County of St. Andrew
Cadastral Sheet E. 2. A.

INSET

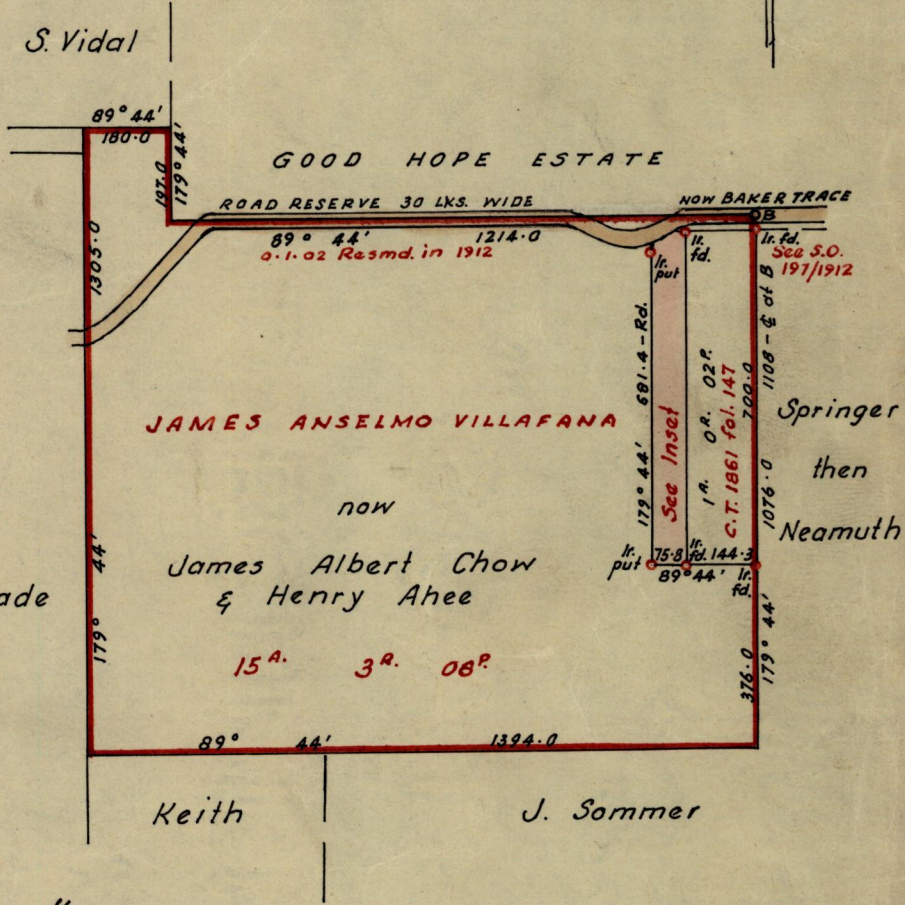


REFERENCE		
STA:	BEARINGS	DISTANCES
B - C	269° 44'	152.0
C - D	241° 49'	76.0
C ₁ - D	241° 49'	7.7
D - E	270° 44'	60.5
D - D ₁	270° 44'	0.9

G. N.

James
Albert
Chow
&
Henry Ahee

Scale : 1/1500 (links)



Approved

L. A. Fanell

Director of Surveys

6.12.69

SCALE : 4 chains to 1 inch

Note : To obtain compass bearings add ~~seconds~~ 16

minutes

Distances are in links

PLAN of a Parcel of land coloured pink in the Ward of Turure

Containing two roods & four perches

Surveyed by me, with due authority, in August 1968.

I certify that I have complied with rule 76 under Section 14 (2) (d) of the Land Surveyors' Ordinance 1952, and that this plan is correct.

Checked by *L. J. D. 4/12/69*

Davis & Petit

Entered

Land Surveyor, Trinidad

29th October 1969

LANDS AND SURVEYS VAULT RECORDS