

No 1855

950

97
97

R.P.O. Vol. 35
C.T. Vol.

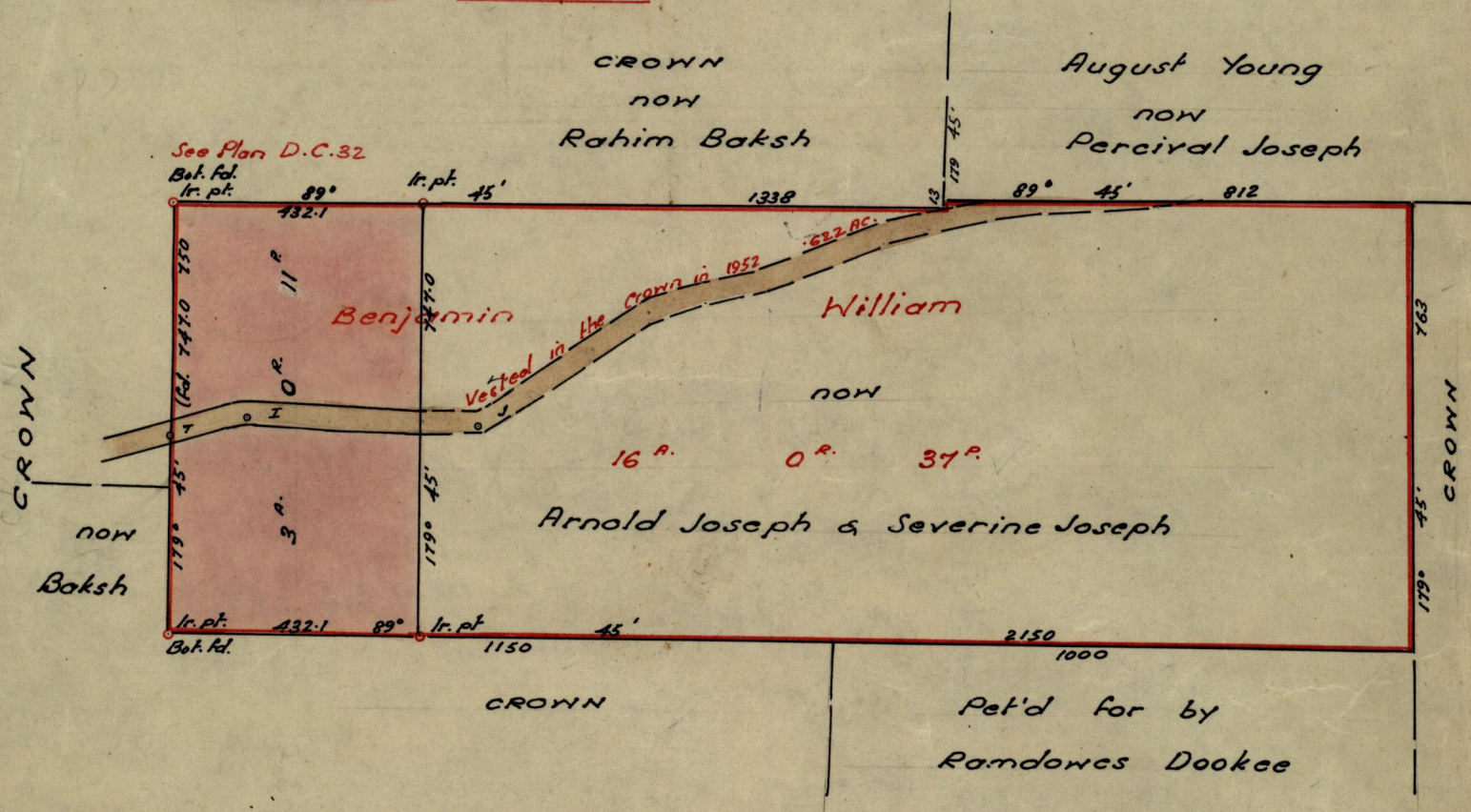
Fol. 93
Fol.

Ward of Tamand
County of St. Andrew
Cadastral Sheet E. 1. C.

G.N.

	I			
27	512.8	9		
32	460	6		
17	400	17		
-----		375.3 = 7		
	0			
G		76° 37' 40"		

	I			
24	300	3		
24	200	12		
26	100	13		
27	0	9		
I		92° 01' 40"		



Approved

Lud. E. Lanell
Director of Surveys
13/6/60

SCALE ~ 1:2500

Note: To obtain compass bearings add/subtract 15 minutes

Distances are in links

PLAN of a Parcel of land coloured pink in the Ward of Tamand
Containing three acres & eleven perches
Surveyed by me, with due authority, in May 1960

I certify that I have complied with rule 76 under Section 14 (2) (d) of the Land Surveyors' Ordinance 1952, and that this plan is correct.

Checked by *[Signature]* 7.6.60.
Entered

Lance R. Pierre
Land Surveyor, Trinidad 4^{1/2} June 19.60.