

80

Nº 16598

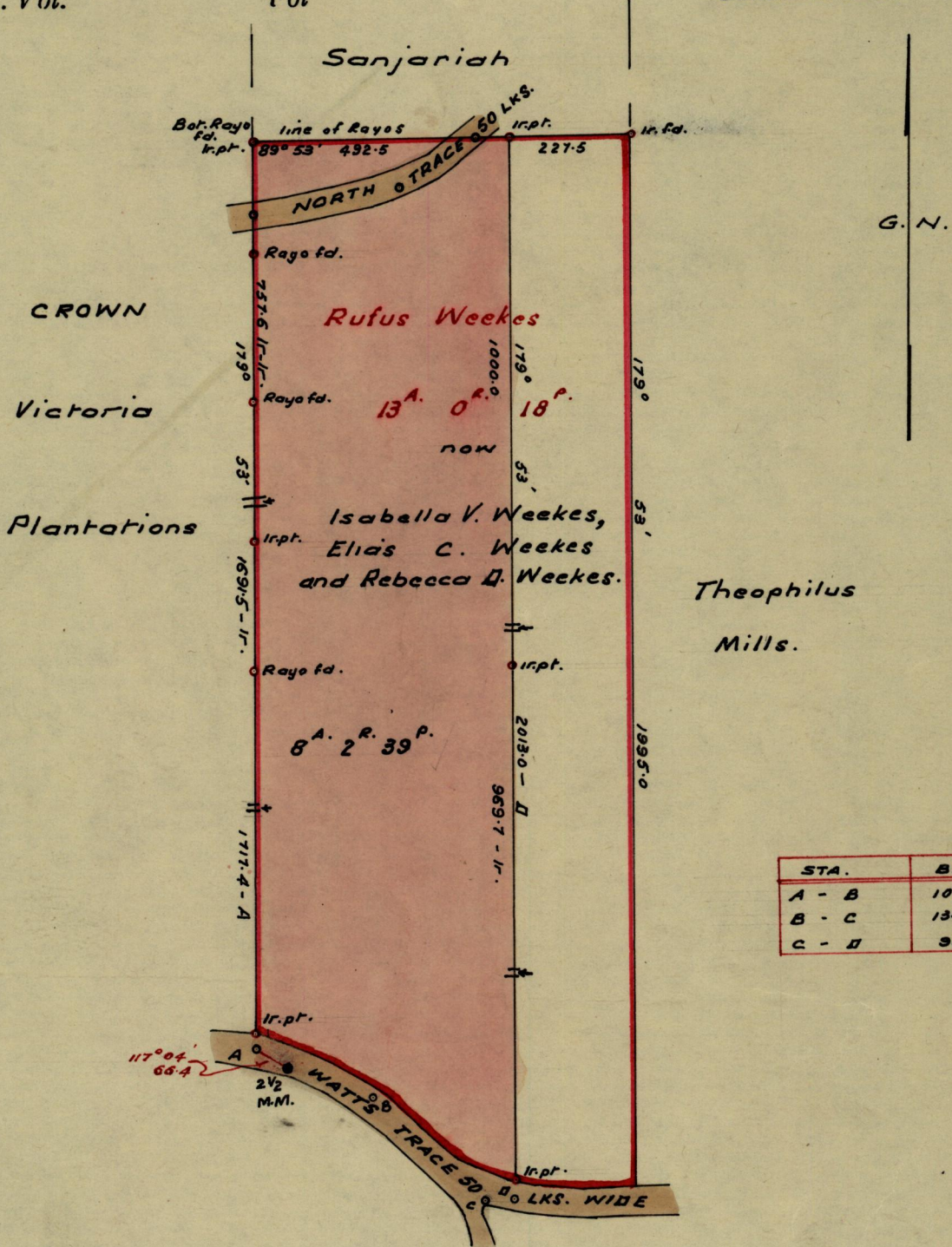
95()

80

R.P.O. Vol. III  
C.T. Vol.

Fol 545  
Fol

Ward of Ortoire  
County of Victoria  
Cadastral Sheet D 25 N



Approved

*Leed. E. Farrell*

Director of Surveys  
16. 10. 65

SCALE ~ 1: 2500

Note: To obtain compass bearings add/subtract 7 minutes Distances are in links

PLAN of a Parcel of land coloured pink in the Ward of Ortoire  
Containing eight acres two roods and thirty nine perches.  
Surveyed by me, with due authority, in November 1964

I certify that I have complied with rule 76 under Section 14 (2) (d) of the Land Surveyors' Ordinance 1952, and that this plan is correct.

Checked by *15/10/65*

*Davis H. Selt*

Entered .....

Land Surveyor, Trinidad *16<sup>th</sup> Aug 1965*