

BK 7
595(1)

L. & S.—54

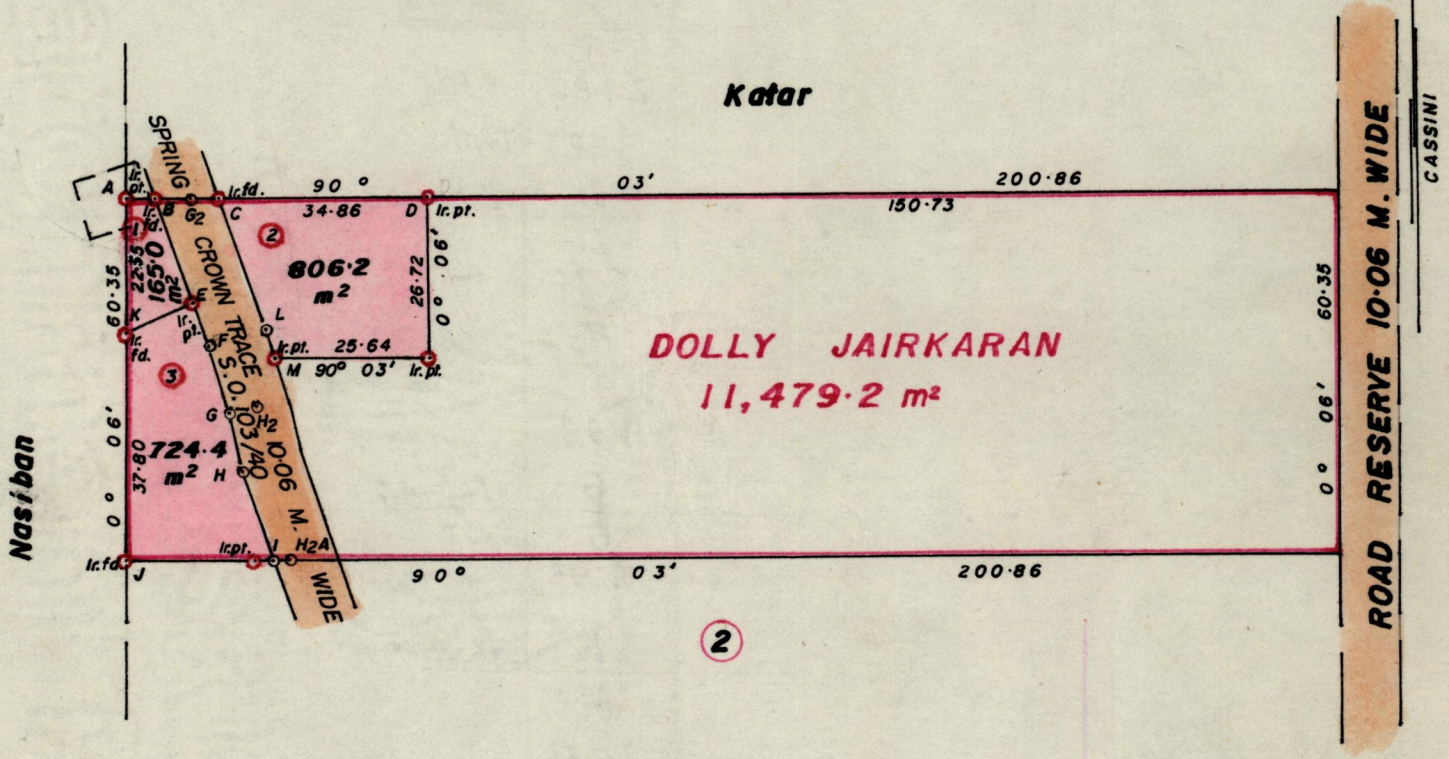
597

No 21045

R.P.O. Vol. 212
C.T. Vol. 3088

Fol. 513
Fol. 503

Ward of **Siparia**.
County of **St. Patrick**.
Cadastral Sheet **G. 17 A. (73A)**
2/a GN



SEE BACK OF PLAN

Approved

Alouisa Thiel
Director of Surveys
88.10.14

SCALE 1:1250.

Note: To obtain compass bearings ~~add~~/subtract 6 minutes Distances are in metres.

PLAN of 3 Parcelsof land coloured pink in the Ward of Siparia .
Containing together one thousand six hundred and ninety five point six sq.metres .
Surveyed by me, with due authority, in July 1987

I certify that I have complied with rule 76 under section 14(2)(d) of the
Land Surveyors' Ordinance 1952, and that this plan is correct.

Checked by *GR 13/10/88*

S. G. Sathyanarayanan
Land Surveyor, Trinidad 15/8/1987

Original Survey Bk 1163 Vol. 31

	H ₂ A 26.19	
	H ₂	167~30
	H ₂ 36.47	
	G ₂	162-38
	E 11.93	
	K	66-44
	J 24.80	Ir.f.d.
	3.32	Ir.pt
	I	270~03
	I 15.74	
	H	158~32
	H 9.86	
	G	167~44
	G 11.53	
	F	163-07
	F 26.61	
Ir.pt	18.91	E
Ir.f.d.	B	160~33
	M 4.86	Ir.pt.
	L	163-07
	L 23.42	
	C	160-33
	C 15.27	Ir.f.d.
	10.82	G ₂
	4.64	B Ir.f.d.
Ir.pt.	A	90~03