

95()

L. & S.—54

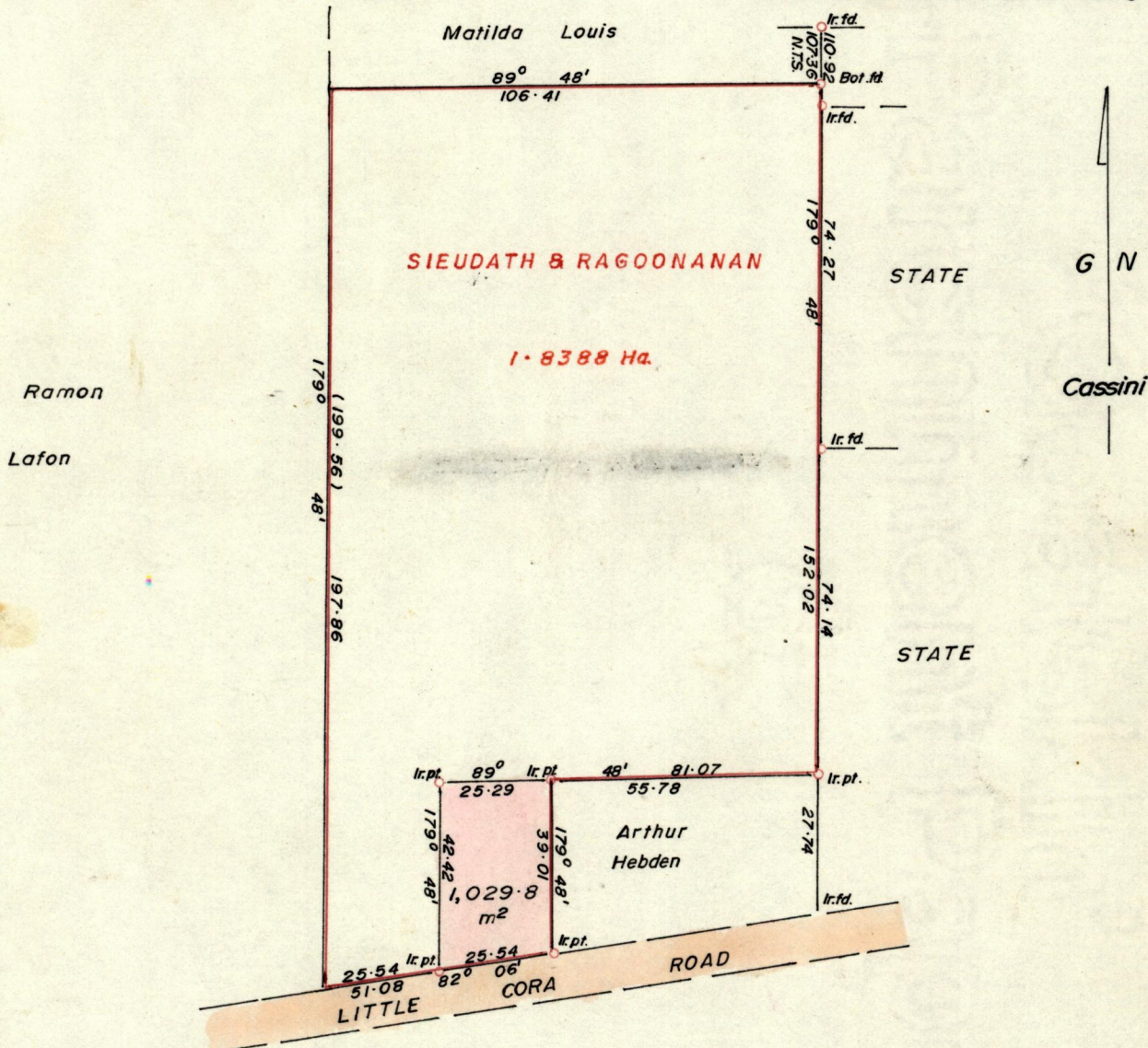
588
588

No 18311

R.P.O. Vol. 74
C.T. Vol. 1654

Fol. 467
Fol. 115

Ward of Tamana
County of St. Andrew
Cadastral Sheet E.I.G 25E
47C



Approved

Alonso R. Kelly
Director of Surveys
38.10.03

SCALE 1:1500

Note: To obtain compass bearings add/subtract minutes Distances are in metres

PLAN of a Parcel of land coloured pink in the Ward of Tamana
Containing one thousand and twenty-nine point eight square metres
Surveyed by me, with due authority, in October, 1987

I certify that I have complied with rule 76 under section 14(2)(d) of the
Land Surveyors' Ordinance 1952, and that this plan is correct.

Checked by *[Signature]* 3/10/88

Entered Land Surveyor, Trinidad 25.11.1987

Original Survey - BK-780 fol. 19